

CERTIFICATE

I, the undersigned, hereby certify that this map is correct to the best of my knowledge and belief and shows all the information required by paragraph 6 of the rules and regulations of the oil and gas section of the mining laws of West Virginia.

Minimum degree of accuracy is one part in 200

Signed *William A. Smith* L.L.S. #116

- NEW LOCATION
- RECONDITION
- DRILL DEEPER
- ABANDONMENT

8-20-71 (N.B. No. 110 Pg. 64 - Hanley Barker)

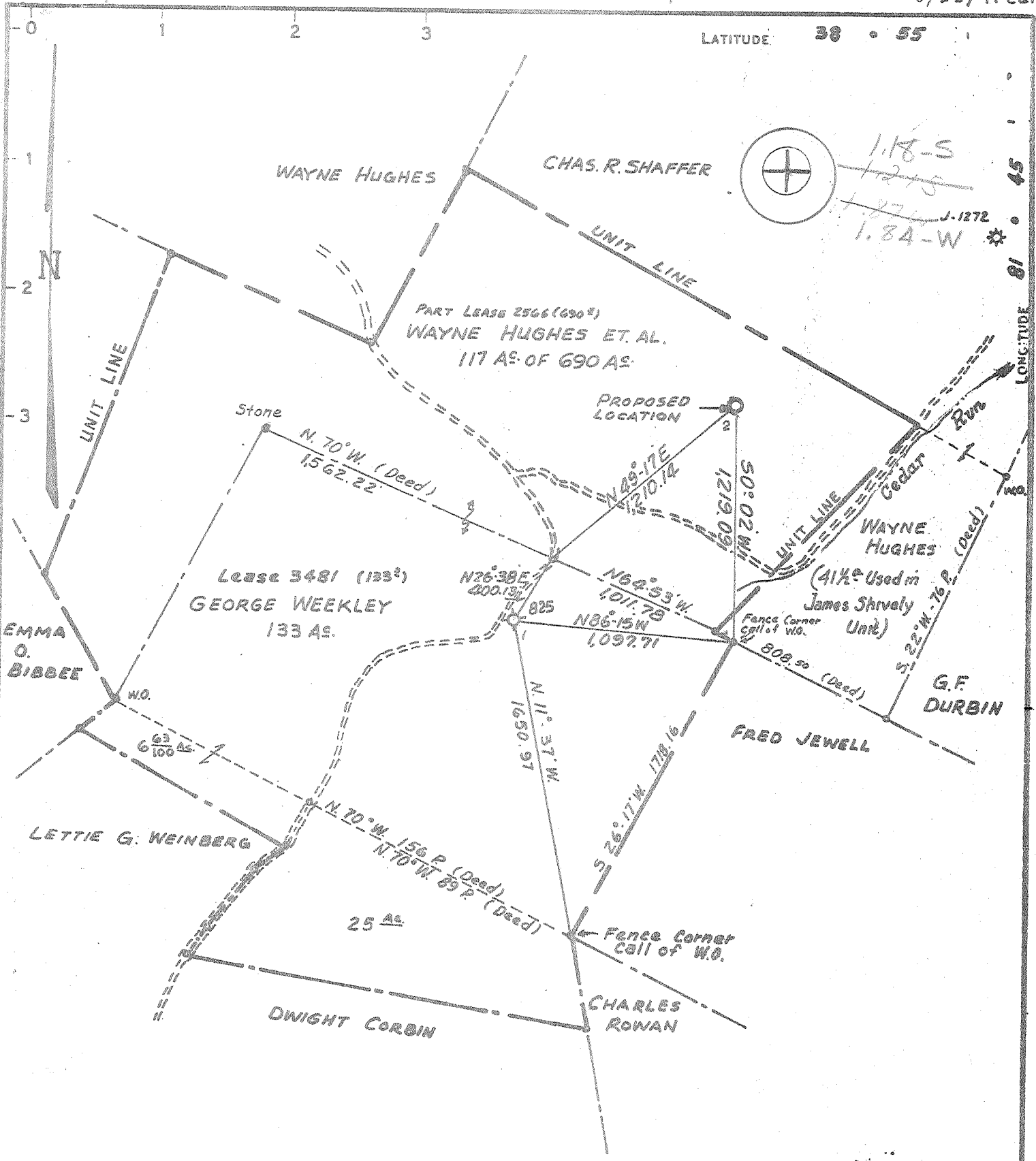
COMPANY CARL SMITH, INC.
 ADDRESS SANDYVILLE, W. VA.
 FARM WAYNE HUGHES ET AL.
 MAP OV 28 ACRES 250 A. TOTAL LEASE NO 2566
 WELL (FARM) NO. 2 SERIAL NO. _____
 ELEVATION (SPIRIT LEVEL) 853.93
 QUADRANGLE RAVENSWOOD NE EC
 COUNTY JACKSON DISTRICT UNION
 POINT OF PROVEN ELEVATION U.S.G.S. DATA - TEMP. BN. TOP OF
KNOB - 2200' EAST OF LOCATION
 FILE NO. _____ DRAWING NO. _____
 DATE AUGUST 20, 1971 SCALE 1" = 660'

STATE OF WEST VIRGINIA
 DEPARTMENT OF MINES
 OIL AND GAS DIVISION
 CHARLESTON
 WELL LOCATION MAP
 FILE NO. JAC-1305-17

+ DENOTES LOCATION OF WELL ON UNITED STATES TOPOGRAPHIC MAPS SCALE 1 TO 62 400 LATITUDE AND LONGITUDE LINES BEING REPRESENTED BY BORDER LINES AS SHOWN
 * DENOTES ONE INCH SPACES ON BORDER LINE OF ORIGINAL TRACING.

Deep Well

47 035 JUL 1 1974



CERTIFICATE

"I, the undersigned, hereby certify that this map is correct to the best of my knowledge and belief and shows all the information required by paragraph 6 of the rules and regulations of the oil and gas section of the mining laws of West Virginia."
 Minimum degree of accuracy is one part in 200

Signed William D. Gandy L.L.S. # 116

- NEW LOCATION
- RECONDITION
- DRILL DEEPER
- ABANDONMENT

(N.B. No. 110 Pg. 64 - Henley Barker)

COMPANY CARL SMITH, INC.
 ADDRESS SANDYVILLE, W.VA.
 FARM WAYNE HUGHES ET AL.
 MAP OV 28 ACRES 250A² TOTAL LEASE NO. 2566
 WELL (FARM) NO. 2 SERIAL NO. _____
 ELEVATION (SPIRIT LEVEL) 853.58
 QUADRANGLE RAVENSWOOD N.E. E0
 COUNTY JACKSON DISTRICT UNION
 POINT OF PROVEN ELEVATION U.S.G.S. DATA - TEMP. BM. TOP OF KNOB - 2200' EAST OF LOCATION
 FILE NO. _____ DRAWING NO. _____
 DATE AUGUST 20, 1971 SCALE 1" = 660'

STATE OF WEST VIRGINIA
 DEPARTMENT OF MINES
 OIL AND GAS DIVISION
 CHARLESTON
WELL LOCATION MAP
 FILE NO. JAC-1305

+ DEMOTES LOCATION OF WELL ON UNITED STATES TOPOGRAPHIC MAPS. SCALE 1 TO 62,500. LATITUDE AND LONGITUDE LINES BEING REPRESENTED BY BORDER LINES AS SHOWN.
 - DEMOTES ONE INCH SPACES ON BORDER LINE OF ORIGINAL TRACING.

6-6 Ripley North (342) (342) AUG 30 1971

Deep Well (Newburg)



RECEIVED

SEP 29 1971

STATE OF WEST VIRGINIA OIL & GAS DIVISION
DEPARTMENT OF MINES DEPT. OF MINES
OIL AND GAS DIVISION

Rotary
Spudder
Cable Tools
Storage C. N. I.
Oil or Gas Well **Gas**
(KIND)

Quadrangle Ravenswood N. E.

Permit No. JAC-1305

WELL RECORD

Company Carl E. Smith Inc.
Address Sandyville, W. Va.
Farm Wayne Hughes Acres 250
Location (waters) Cedar Run
Well No. 2 Elev. 833.58
District Union County Jackson
The surface of tract is owned in fee by Wayne Hughes
Address Ravenswood, W. Va.
Mineral rights are owned by Wayne Hughes
Address Ravenswood, W. Va.
Drilling commenced 8-24-71
Drilling completed 9-8-71
Date Shot From To
With
Open Flow /10ths Water in Inch
/10ths Merc. in Inch
Volume 2,000 M.C.F. Cu. Ft.
Rock Pressure 1300 lbs. 24 hrs.
Oil bbls., 1st 24 hrs.
WELL ACIDIZED (DETAILS)
WELL FRACTURED (DETAILS) No

Casing and Tubing	Used in Drilling	Left in Well	Packers
Size			Kind of Packer
16			
13 3/8	83	83	Size of
10			Depth set
8 5/8	2347	2347	
6 3/4			
5 1/2	5206	5206	Perf. top
4 1/2			Perf. bottom
3			Perf. top
2 3/8	5241	5241	Perf. bottom
Liners Used			

Attach copy of cementing record.
CASING CEMENTED SIZE No. Ft. Date
Amount of cement used (bags) See below
Name of Service Co.
COAL WAS ENCOUNTERED AT FEET INCHES
FEET INCHES FEET INCHES
FEET INCHES FEET INCHES

RESULT AFTER TREATMENT (Initial open Flow or bbls.) 2,000 MCF 7,000,000
ROCK PRESSURE AFTER TREATMENT HOURS
Fresh Water None Feet Salt Water 1900 Feet
Producing Sand Newberg Depth 5225

Formation	Color	Hard or Soft	Top	Bottom	Oil, Gas or Water	Depth	Remarks
Surface			0	85			
Sand/Shale			85	1660			
Line - Bigline and others			1660	2090	Water	1900	
Shale			2090	2225			
Shale/Sand			2225	2303			
BEREA			2303	2306			
Shale			2306	4470			
Line - Onondaga plus DRISKANY, HELLS, & SALINA			4470	5210			
Sand			5210	5225			
NEWBERG			5225	5230	Gas		
Sand/Shale - McKenzie			5230	5255			TD

CEMENT RECORD

8/24/71	80 bags	13 3/8"	Well service
8/30/71	400 bags	8 5/8"	Well Service
9/3/71	115 bags	5 1/2"	Halliburton