

ACCURACY: 1P / 200P

Source of Elevation COTTAGEVILLE ROAD (607')

- New Location
- Drill Deeper
- Abandonment *issued 10/13/72*
- Fracture
- Redrill

I, the undersigned, hereby certify that this map is correct to the best of my knowledge and belief and shows all the information required by paragraph 6 of the rules and regulations of the oil and gas section of the mining laws of West Virginia.

*Chet Waterman*

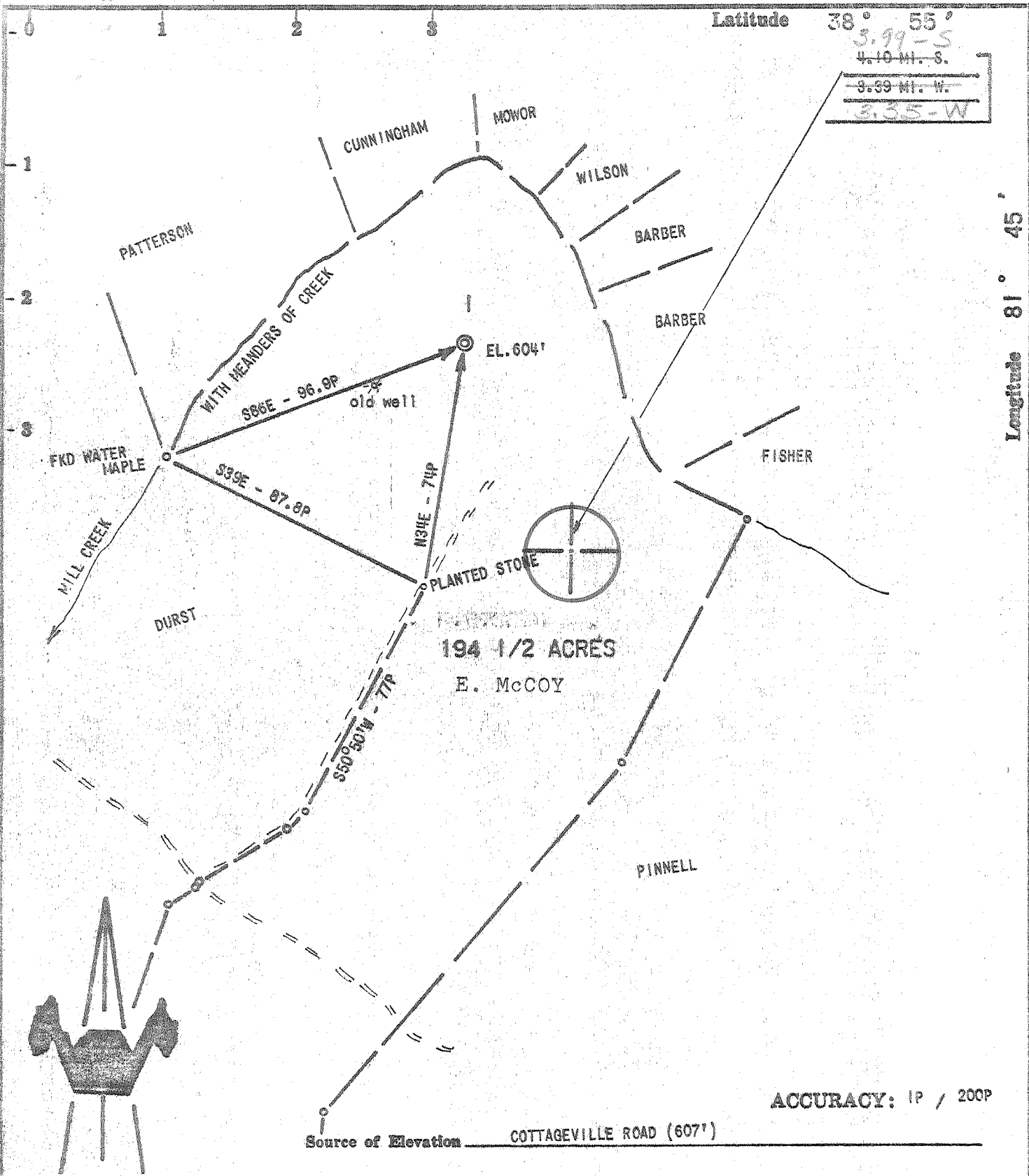
Company	W.C. STALNAKER, INC.	
Address	CHARLESTON, W. VA.	
Farm	E. MCCOY	
Tract	Acres 194 1/2	Case No.
Well (Farm) No.	1	Serial No.
Elevation (Spirit Level)	604'	
Quadrangle	RAVENWOOD EC	
County	JACKSON	District UNION
Engineer	CHET WATERMAN	
Engineer's Registration No.	3788	
File No.	71003-335	Drawing No.
Date	8/29/71	Scale 1" = 40P

STATE OF WEST VIRGINIA  
DEPARTMENT OF MINES  
OIL AND GAS DIVISION  
CHARLESTON

WELL LOCATION MAP  
FILE NO. *900-1307-P*

+ Denotes location of well on United States Topographic Maps, scale 1 to 62,500, latitude and longitude lines being represented by border lines as shown.

— Denotes one inch spaces on border line of original tracing.



I, the undersigned, hereby certify that this map is correct to the best of my knowledge and belief and shows all the information required by paragraph 6 of the rules and regulations of the oil and gas section of the mining laws of West Virginia.

*Chet Waterman*

- New Location
- Drill Deeper
- Abandonment
- Fracture
- Redrill

Company	W.C. STALNAKER, INC.
Address	CHARLESTON, W. VA.
Farm	E. McCoy
Tract	Acres 194 1/2 case No.
Well (Farm) No.	1 Serial No.
Elevation (Spirit Level)	604'
Quadrangle	RAVENSWOOD EC
County	JACKSON District UNION
Engineer	CHET WATERMAN
Engineer's Registration No.	3788
File No.	71003-335 Drawing No.
Date	8/29/71 Scale 1" = 40P

STATE OF WEST VIRGINIA  
DEPARTMENT OF MINES  
OIL AND GAS DIVISION  
CHARLESTON

WELL LOCATION MAP  
FILE NO. *Gas-1307*

+ Denotes location of well on United States Topographic Maps, scale 1 to 62,500, latitude and longitude lines being represented by border lines as shown.

— Denotes one inch spaces on border line of original tracing.



RECEIVED

OCT 13 1972 Rotary

STATE OF WEST VIRGINIA  
 DEPARTMENT OF MINES & GAS DIVISION  
 OIL AND GAS WELLS DIVISION  
 Spudder   
 Cable Tools   
 Storage

Quadrangle Ravenswood

Permit No. Jac. - 1307

WELL RECORD

Oil or Gas Well Dry (KIND)

Company W. C. Stalnaker, Inc.  
 Address Charleston, W. Va.  
 Farm E. McCoy Acres 194 1/2  
 Location (waters) Mill Creek  
 Well No. / Elev. 620 KB  
 District Union County Jackson  
 The surface of tract is owned in fee by \_\_\_\_\_  
 Address \_\_\_\_\_  
 Mineral rights are owned by \_\_\_\_\_  
 Address \_\_\_\_\_  
 Drilling commenced 9-1-71  
 Drilling completed 9-19-71  
 Date Shot \_\_\_\_\_ From \_\_\_\_\_ To \_\_\_\_\_  
 With \_\_\_\_\_  
 Open Flow /10ths Water in \_\_\_\_\_ Inch  
/10ths Merc. in \_\_\_\_\_ Inch  
 Volume \_\_\_\_\_ Cu. Ft.  
 Rock Pressure est. 30 Mcf lbs \_\_\_\_\_ hrs.  
 Oil \_\_\_\_\_ bbls., 1st 24 hrs.  
 WELL ACIDIZED (DETAILS) \_\_\_\_\_  
 WELL FRACTURED (DETAILS) \_\_\_\_\_

Casing and Tubing	Used in Drilling	Left in Well	Packers
Size			Kind of Packer
16			
13	103'	103'	
10			Size of
8 5/8"	2179'	2179'	
6 3/4"			Depth set
5 7/16"	4990'	4990'	
4 1/2"			
3			Perf. top
2			Perf. bottom
Liners Used			Perf. top
			Perf. bottom

Attach copy of cementing record.  
 CASING CEMENTED \_\_\_\_\_ SIZE \_\_\_\_\_ No. Ft. \_\_\_\_\_ Date \_\_\_\_\_  
 Amount of cement used (bags) See below  
 Name of Service Co. \_\_\_\_\_  
 COAL WAS ENCOUNTERED AT \_\_\_\_\_ FEET \_\_\_\_\_ INCHES  
 \_\_\_\_\_ FEET \_\_\_\_\_ INCHES FEET \_\_\_\_\_ INCHES  
 \_\_\_\_\_ FEET \_\_\_\_\_ INCHES FEET \_\_\_\_\_ INCHES

RESULT AFTER TREATMENT (Initial open Flow or bbls.) \_\_\_\_\_  
 ROCK PRESSURE AFTER TREATMENT \_\_\_\_\_ HOURS \_\_\_\_\_  
 Fresh Water \_\_\_\_\_ Feet \_\_\_\_\_ Salt Water \_\_\_\_\_ Feet \_\_\_\_\_  
 Producing Sand \_\_\_\_\_ Depth \_\_\_\_\_

Formation	Color	Hard or Soft	Top	Bottom	Oil, Gas or Water	Depth	Remarks
Sand, Shale & Limestone	Red Rock		0	±1460			
Big Lime			±1460	1570			
Shale			1570	1636			
Shale			1636	1666			
Shale			1666	1798			
Shale			1798	2100			
Shale			2100	2116			
Shale			2116	2126			
Shale			2126	4248			
Carboniferous			4248	4333			
Carboniferous			4333	4340			
Lime - HELDERBERG			4340	4516			
Dolomite - SALINA			4516	4999			
Dolomite			4999	5006			
Shale & Dolomite - MCKENZIE			5006				
TOTAL DEPTH				5043			
				545			
13"	103'	9-2-71	100 sks.	Well Service			
8 5/8"	2179'	9-8-71	400 sks.	Dowell			
5 1/2"	4990'	9-16-71	150 sks.	Dowell			

P.I cards show gas pay of 30 MCF BPD in Newberg from 4999 to 5006

(over)

OCT 23 1972