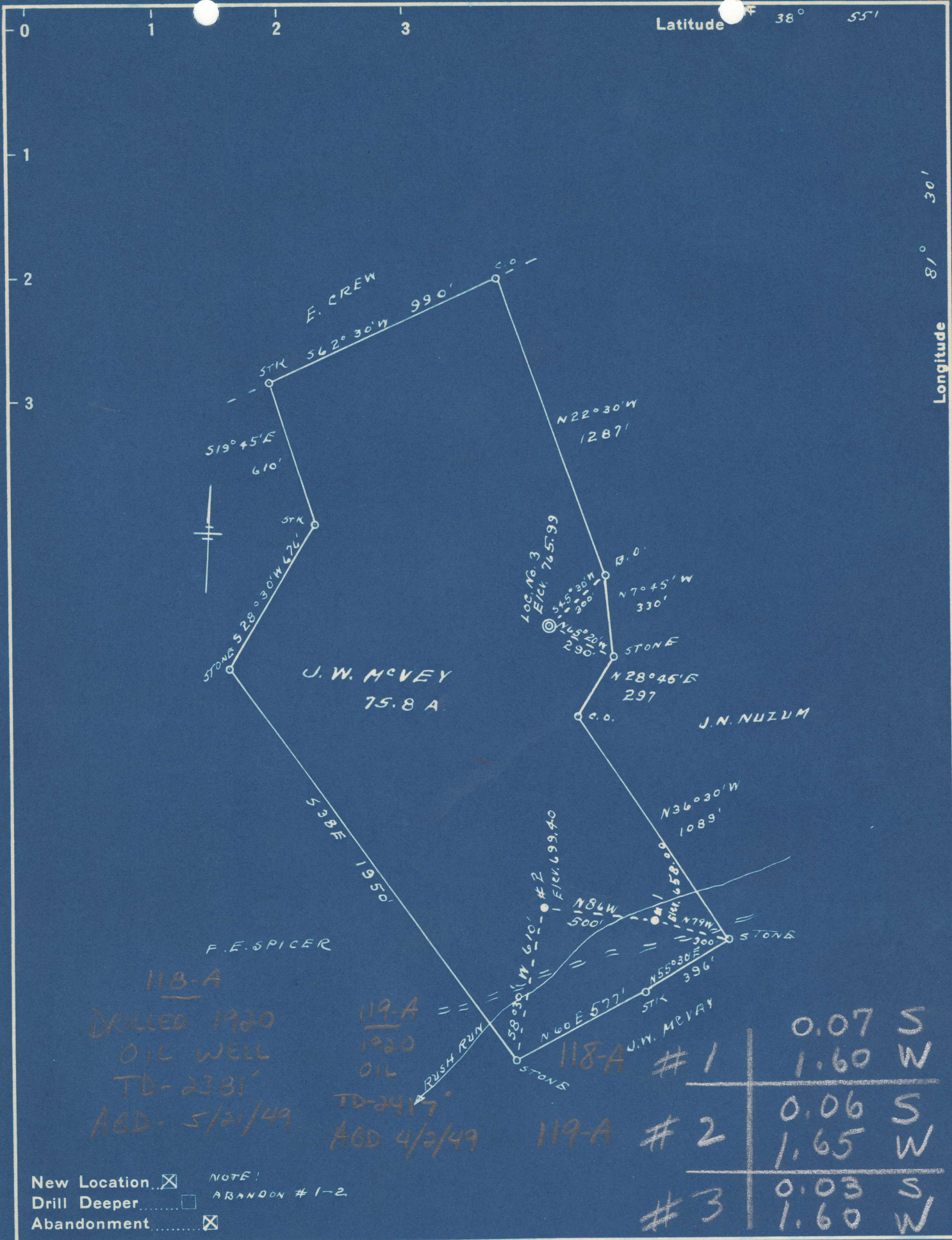


Latitude 38° 55'



118-A
 DRILLED 1920
 OIL WELL
 TD-2381'
 AGD- 5/21/49

119-A
 1920
 OIL
 TD-2417'
 AGD 4/2/49

118-A #1	0.07 S
	1.60 W
119-A #2	0.06 S
	1.65 W
#3	0.03 S
	1.60 W

New Location NOTE!
 Drill Deeper ABANDON #1-2
 Abandonment

Company C. O. NICHOLS
 Address 1008 FIRST AVE., CHARLESTON, W.VA.
 Farm J. W. McVAY
 Tract _____ Acres 75.8 Lease No. _____
 Well (Farm) No. 51-2-3 Serial No. _____
 Elevation (Spirit Level) SEE ABOVE
 Quadrangle RIPLEY
 County JACKSON District RAVENSWOOD
 Engineer R. F. Rye
 Engineer's Registration No. 804
 File No. _____ Drawing No. _____
 Date 2-24-49 Scale 1" = 500'

STATE OF WEST VIRGINIA
 DEPARTMENT OF MINES
 OIL AND GAS DIVISION
 CHARLESTON

WELL LOCATION MAP
 FILE NO. JAC-663-#3

JAC-118A (#1)
 + Denotes location of well on United States Topographic Maps, scale 1 to 62,500, latitude and longitude lines being represented by border lines as shown.
 - Denotes one inch spaces on border line of original tracing.