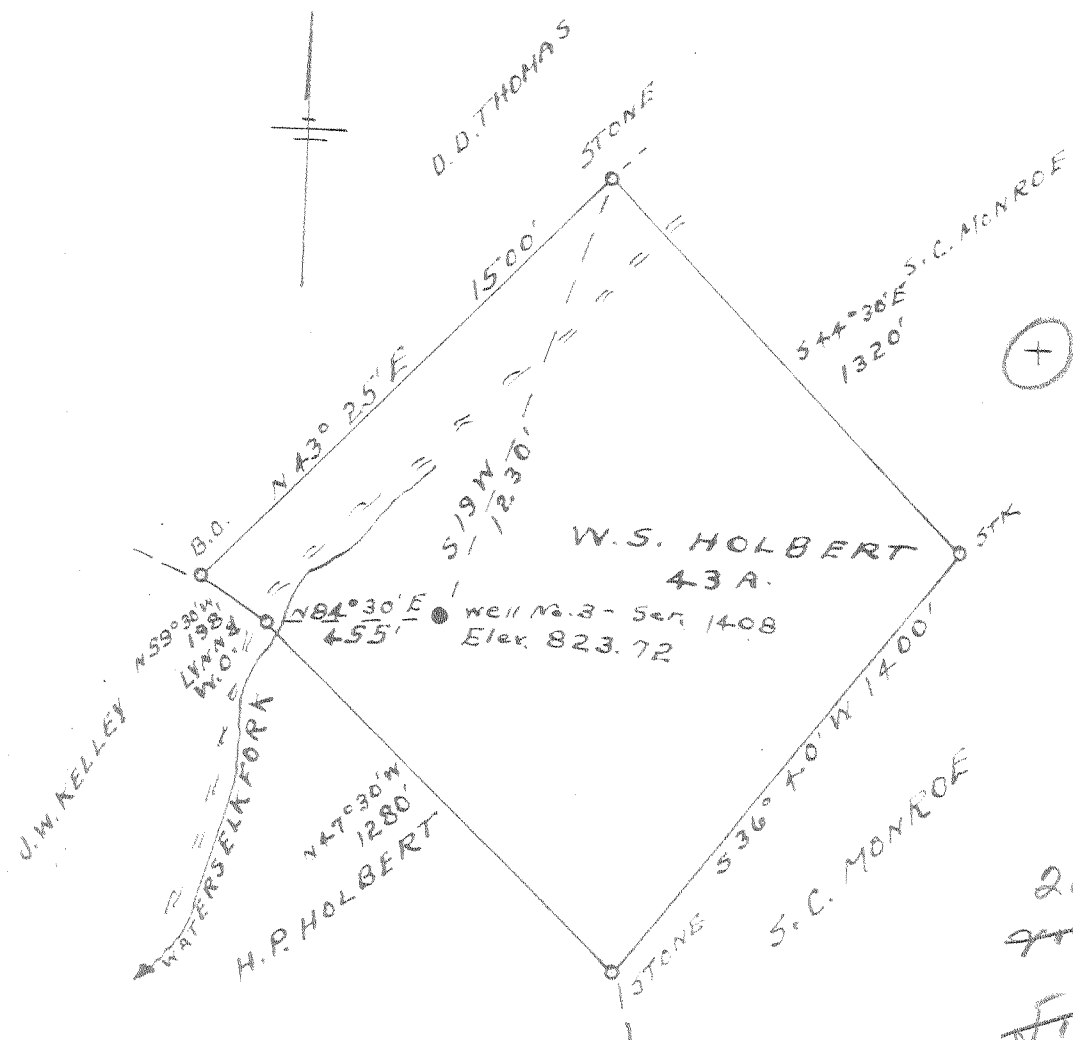


Latitude $38^{\circ} 50'$
 Longitude $81^{\circ} 30'$



2.00 - W
~~9102 W~~
~~5.52 W~~
 5.47 - S

New Location
 Drill Deeper
 Abandonment

Company WALKER-BEREN OIL & GAS CO.
 Address PARKERSBURG, W. VA.
 Farm W. S. HOLBERT
 Tract _____ Acres 4.3 Lease No. _____
 Well (Farm) No. 3 Serial No. 1408
 Elevation (Spirit Level) 823.72
 Quadrangle RIPLEY
 County JACKSON District WASHINGTON
 Engineer L. F. Dye
 Engineer's Registration No. 804
 File No. _____ Drawing No. _____
 Date 6-5-51 Scale 1" = 500'

STATE OF WEST VIRGINIA
 DEPARTMENT OF MINES
 OIL AND GAS DIVISION
 CHARLESTON

WELL LOCATION MAP
 FILE NO. JAC-125-A

+ Denotes location of well on United States Topographic Maps, scale 1 to 62,500, latitude and longitude lines being represented by border lines as shown.

- Denotes one inch spaces on border line of original tracing.

6-6-163

IMPERIAL TRACING CLOTH
 K & E CO., N. Y.

W. S. HOLBERT No. 3 (1408) - WALKER-BEREN O. & G. Co. - JAC-125A

W. S. HOLBERT NO. 3 (1408) WELL.

2/16

Washington District, Jackson County, W. Va.
 By Walker-Boron Oil Co., Parkersburg, W. Va.
 Abandoned under permit Jac-125-A; Ripley Quadrangle.
 On 43 acres, on Elk Park.
 Elevation, 823.72' L.

Surface and minerals owned by Holbert Heirs, Gey, W. Va.
 Drilling commenced Jan. 13, 1920; completed Jan. 27, 1920.
 Shot Jan. 30, 1920, with 20 sts., 20' shell.

Oil, 4 bbls. after shot.
 8" casing, 685'; 6" tubing, 863'; 2" tubing, 1035'; all left in.
 Oil well. Record to Dept. of Mines stamped June 8, 1951.

Record to RCT from Dept. of Mines (Lineberg) May 24, 1952. O.P.No. 286.

	Top.	Bottom.
Rock, red, soft	0	20
Sand, hard	20	65
Slate	65	115
Sand	115	140
Rock, red, soft	140	170
Sand, hard	170	200
Slate	200	340
Sand, hard	340	395
Slate	395	480
Sand, hard - 1 st Pitts.?	480	540
Rock, red, soft	540	708
Little Dunkard Sand - G	708	730
Slate	730	815
Big Dunkard Sand, hard - G	815	965
Slate (oil, 1020')	965	1045
Total depth		1045

200

Answers 8/10/51