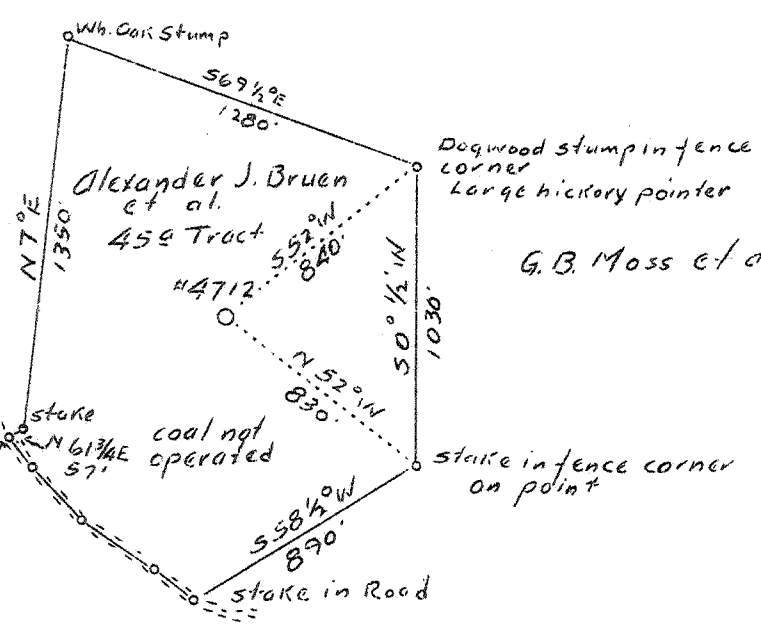


LATITUDE 38° 35'

LONGITUDE 81° 35'

3.935  
0.490

A. J. Bruen et al.



G. B. Moss et al.

ABD  
12/45

Company United Fuel Gas Co.  
 Address Charleston, W. Va.  
 Farm Alexander J. Bruen et al.  
 Tract acres 42000 Lease No. 860  
 Well (Farm) No. 6 Serial No. 4712  
 Elevation (Spirit Level)  
 Quadrangle Kenna  
 County Kanawha District Poca  
 Engineer G. A. Cunningham  
 Engineer's Registration No. 659  
 File No. 64-71 Drawing No.  
 Date Dec. 18, 1936 Scale 1"-660'

STATE OF WEST VIRGINIA  
 Department of Mines  
 OIL AND GAS DIVISION  
 CHARLESTON

WELL LOCATION MAP  
 File No. KAV-316

+ Denotes location of well on U. S. Topographic maps, scale 1 to 62,500, latitude and longitude lines being represented by border lines as shown.  
 - Denotes one inch spaces on border line of original tracing.

66192 Deep well ✓

