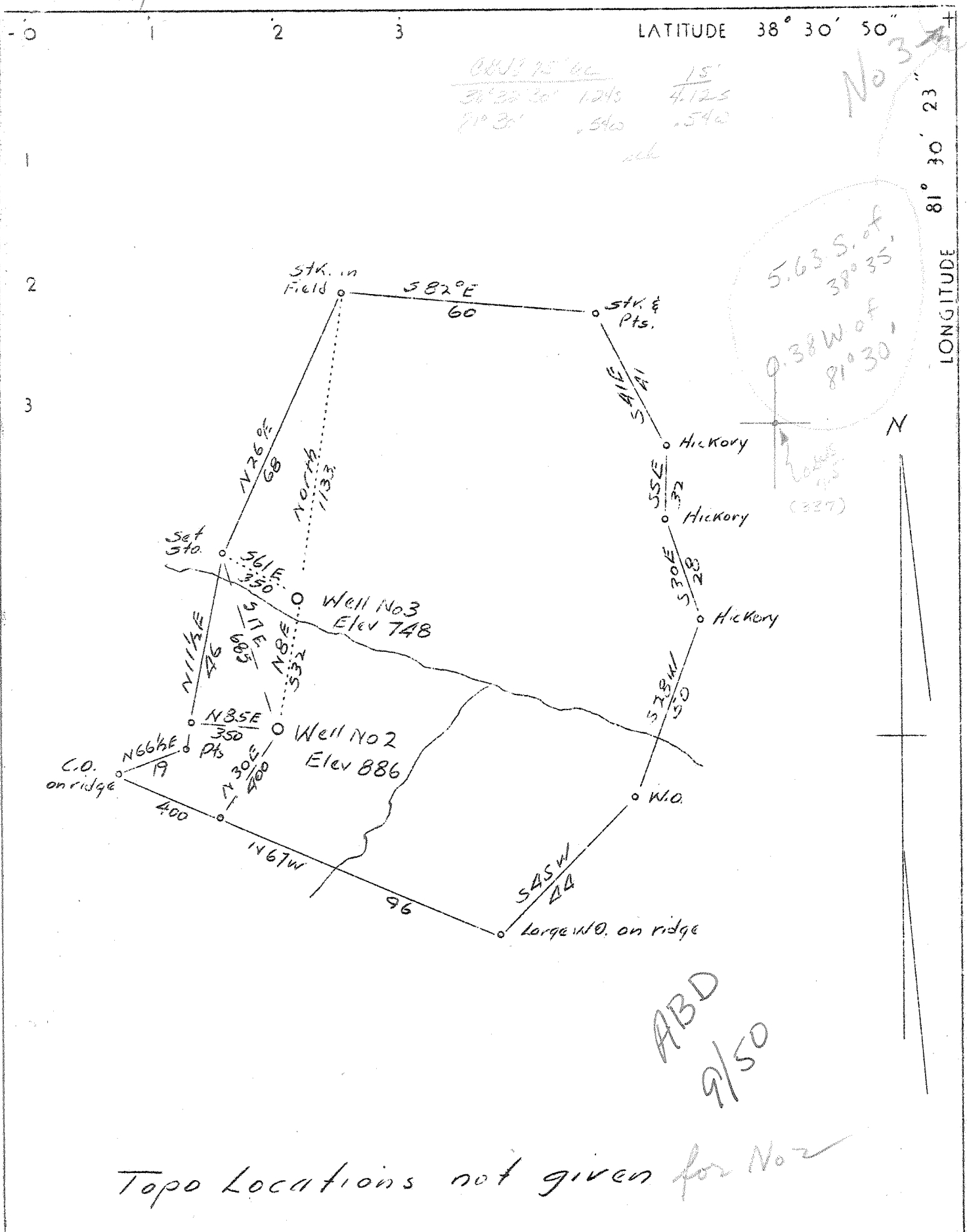


M



Company Poca Fork Oil & Gas Co.  
 Address Clendennin, W. Va.  
 Farm D. M. Cantaberry  
 Tract Acres 80 Lease No. \_\_\_\_\_  
 Well (Farm) No. 2 & 3 Serial No. \_\_\_\_\_  
 Quadrangle \_\_\_\_\_  
 County Kanawha  
 District Elk  
 Engineer A. E. Price  
 Engineer's Registration No. 819  
 File No. \_\_\_\_\_ Drawing No. \_\_\_\_\_  
 Date 2-27-37 Scale 1" = 495'

STATE OF WEST VIRGINIA  
 Department of Mines  
 OIL AND GAS DIVISION  
 Charleston  
 W E L L L O C A T I O N M A P  
 File No. KAN-336-337  
 + Denotes location of well on U. S. Topographic Maps, scale 1 to 62,500 latitude and longitude lines being represented by border lines as shown  
 — Denotes one inch spaces on border line of original tracing.

WEST VIRGINIA DEPARTMENT OF MINES

OIL AND GAS DIVISION

WELL RECORD

Permit No. Kan 337

Gas Well

Walton Quad.

CASING & TUBING

Company	Poca Fork Oil & Gas Co.	13	59'9"	None
Address	Clendenin, W.Va.	10	476'	
Farm	D.M. Canterbury Acres 88	8 $\frac{1}{2}$	1747 $\frac{1}{2}$	All
Location	Poca Fork of Little Sandy	7 O.D.	4929	All
Well No.	3 Elev. 795	2	7070	All
District	Elk County Kanawha			
Surface	D.M. Canterbury, Frame, W.Va.			CASING CEMENTED: 8 $\frac{1}{2}$ "
Mineral	D.M. Canterbury, et al, Frame, W.Va.			200'.
Drilling	Commenced May 12, 1937			7" O.D. cemented with
	Completed Nov. 12, 1937			20 sacks.
Date Shot	Nov. 7, 1937 Depth 5047-5071			
Volume	About 15,000,000 Cu.Ft.			
Rock Press.	1725# 12 hrs.			

Formation	Color	Hor	TOP	Base	Result	Formation	Color	Hor	TOP	Base	Result
Sand			0	10		Shale	Brown		4516	4553	
Slate & Red Rock			10	125		Shale	Grey		4553	4618	
Sand			125	150		Shale	Brown		4618	4780	
Red Rock			150	170		Shale	Black		4780	4913	
Sand			170	195		Corniferous Lime			4913	5035	
Slate			195	210		Griskany Sand			5035	5079	
Sand			210	265		Lime			5079	5086	Gas
Slate			265	320							5053-
Sand			320	522							5057
Slate & Shell			522	580							
Sand			580	600							
Slate			600	625							
Sand			625	734							
Slate			734	781							
Sand			781	842							
Slate & Shell			842	955							
Salt Sand			955	1293							
Slate & Shell			1293	1340							
Sand			1340	1467							
Lime			1467	1470							
Maxon Sand			1470	1517							
Little Lime			1517	1535							
Pencil Cave			1535	1538							
Big Lime			1538	1701	Showing						
Injun Sand			1701	1729	of Gas						
Slate & Shells			1729	2174	1630						
Shale	Brown		2174	2204							
Berea Grit			2204	2222	Showing						
Slate & Shells			2222	2395	of Gas						
Shale	Brown		2395	2425	1668						
Slate & Shells			2425	2660							
Lime			2660	2703							
Slate & Shells			2703	2980							
Lime			2980	3010							
Slate & Shells			3010	3240							
Lime			3240	3260							
Slate & Shells			3260	3325							
Slate			3325	3385							
Slate & Shells			3385	3618							
Shale			3618	3668							
Slate & Shell			3668	3824							
Shale	Brown		3824	3958							
Slate & Shells			3958	4000							
Lime		H	4000	4018							
Slate & Shells			4018	4336							
Lime			4336	4372							
Slate & Shells			4372	4516							

NOTE: 3/10 M. 7" O.D. Casing  
 Shot 120 qts. tamped.  
 A.S. 44/10 M. in 7" (gauge taken in 7"  
 I.D. gate.)