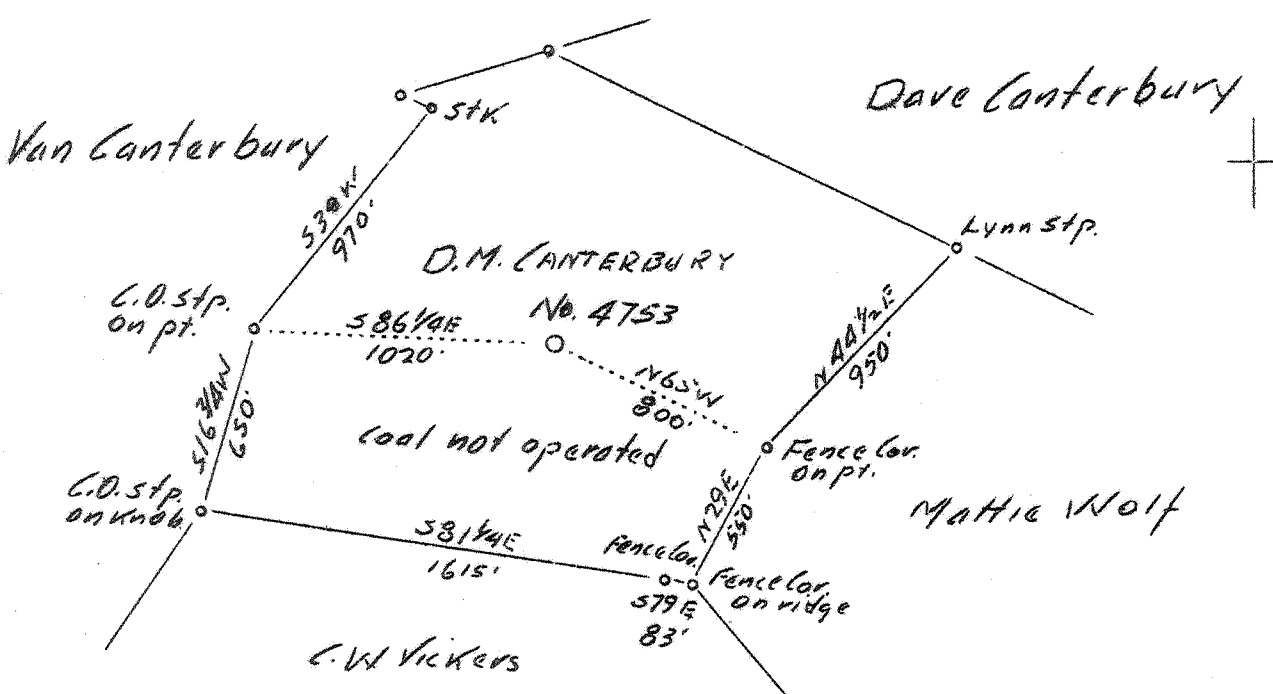


LATITUDE 38° 35'

LONGITUDE 81° 30'



0.6 W
4.37 R

Company	United Fuel Gas Co.
Address	Charleston, W.Va.
Farm	D.M. Canterbury
Tract	Acres 64.5 Lease No. 25181
Well (Farm) No.	1 Serial No. 4753
Elevation	(Spirit Level)
Quadrangle	Kenna
County	Kanawha District Elk
Engineer	G.A. Cunningham
Engineer's Registration No.	659
File No.	68-71 Drawing No.
Date	June 7, 1937 Scale 1"-660'

STATE OF WEST VIRGINIA
 Department of Mines
 OIL AND GAS DIVISION
 CHARLESTON

WELL LOCATION MAP
 File No. KAN-391

+ Denotes location of well on United States Topographic Maps, scale 1 to 62,500, latitude and longitude lines being represented by border lines as shown.

— Denotes one inch spaces on border line of original tracing.

WEST VIRGINIA DEPARTMENT OF MINES

OIL & GAS DIVISION

WELL RECORD

Permit No. Kan-391

Gas Well

Kenn. Quad.

CASING & TUBING

Company	United Fuel Gas Co.	13	41	41
Address	Charleston, W. Va.	10	574	574
Form	D. M. Canterbury ACRES 64.5	8-5/8	1831	1831
Location	Poca Fork of Little Sandy Creek	7"	5012	5012
Well No.	4753 ELEV. 887.77			
District	Elk - Kanawha County			
Surface & Mineral Address	D. M. Canterbury Frame, W. Va.			
Drilling commenced	July 22, 1937			
Drilling completed	Nov. 24, 1937			
Date shot	11/25/37 - Depth 5117			
Open Flow	24/10ths Merc. in 7 inch			
Volume	8,622,000 c.f			
Rock Pressure	1610 lbs. 30 days			
Salt Water	1230'			

Formation Color ^{40'} TOP Base Result Formation Color ^{40'} TOP Base Result

Formation	Color	^{40'} TOP	Base	Result	Formation	Color	^{40'} TOP	Base	Result
Gravel		0	38						
Red Rock		38	70						
Slate		70	90						
Red Rock		90	160						
Slate & Shells		160	175						
Red Rock		175	190						
Sand		190	205						
Slate & Shells		205	225						
Red Rock		225	300						
Sand		300	335						
Red Rock		335	365						
Sand		365	465						
Slate & Shells		465	545						
Sand		545	600						
Slate & shells		600	710						
Sand		710	800						
Slate & shells		800	915						
Sand		915	925						
Slate & shells		925	980						
Sand		980	995						
Slate & Shells		995	1040						
Gas Sand		1040	1110						
White slate		1110	1120						
Salt Sand		1120	1370						
Slate & shells		1370	1440						
Sand		1440	1567						
Slate		1567	1573						
Little Lime		1573	1587						
Pencil cave		1587	1592						
Black lime		1592	1615						
Big lime		1615	1775						
Injun sand		1775	1792						
Slate & shells		1792	3375						
Brown shale		3375	3485	Gas 3475					
Slate & shells		3485	3540						
Brown shale		3540	4080						
White slate		4080	4540						
Brown shale		4540	4850						
White slate		4850	4910						
Black slate		4910	4998						
Corniferous lime		4998	5114						
Criskany sand		5114	5156						
Total Depth			5156						