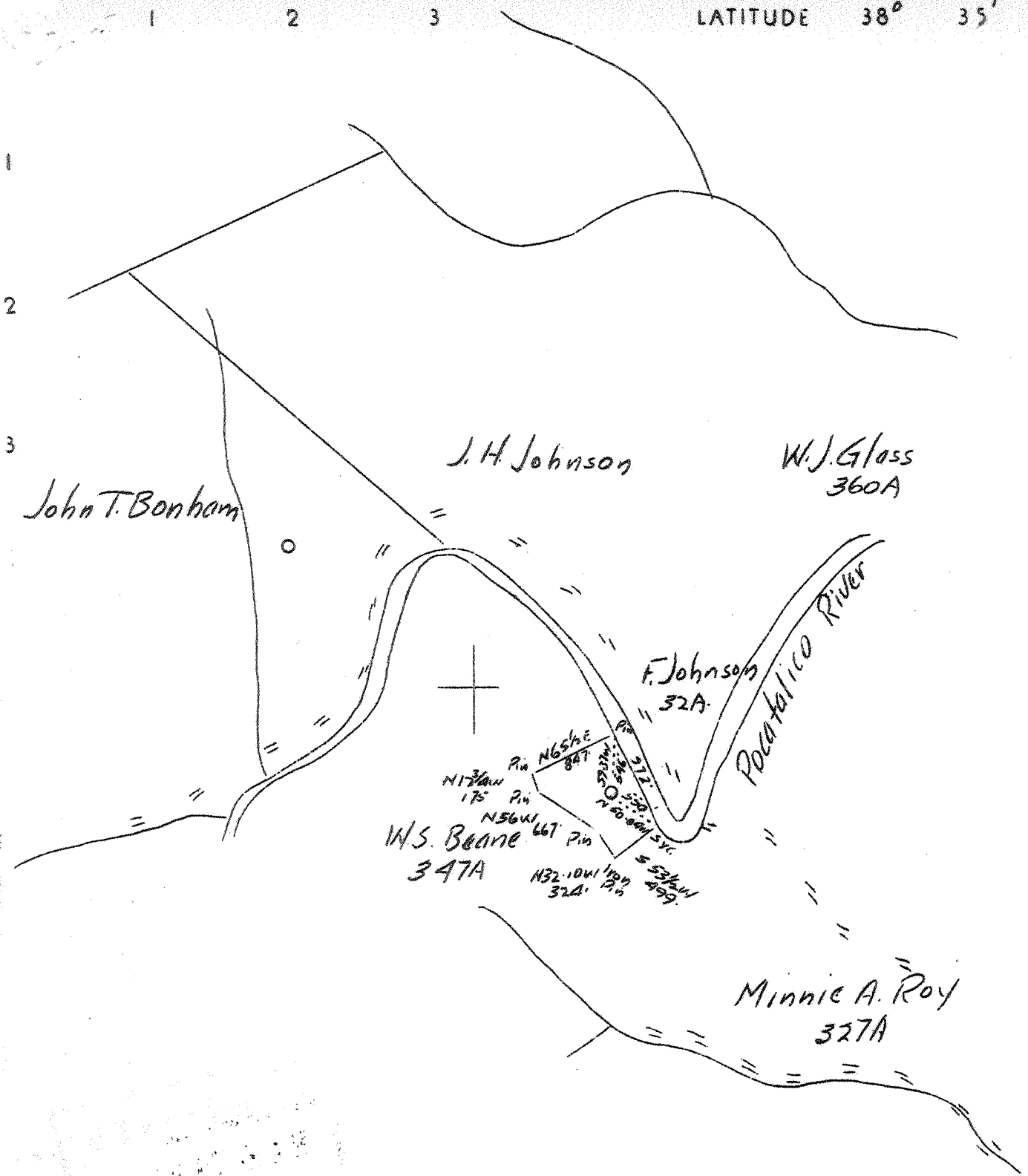


771

1 2 3 LATITUDE 38° 35'

LONGITUDE 81° 35'



4.18 W
4.88 A

Ground Elev 654.91 (spirit)

Company	Godfrey L. Cabot, Inc.		
Address	600 Union Bldg., Charleston, W. Va.		
Farm	Kathrine Bell Jarrett		
Tract	Acres	20	Lease No. 4-613
Well (Farm) No.	1	Serial No.	912
Quadrangle	Kenna		
County	Kanawha		
District	Poca		
Engineer	O.L. Fitz Randolph		
Engineer's Registration No.	806		
File No.	Drawing No.		
Date	July 3, 1937 Scale 1"-1320'		

STATE OF WEST VIRGINIA
Department of Mines
OIL AND GAS DIVISION
CHARLESTON

WELL LOCATION MAP
File No. KAN-418

+ Denotes location of well on United States Topographic Maps, scale 1 to 62,500, latitude and longitude lines being represented by border lines as shown.

— Denotes one inch spaces on border line of original tracing.

WEST VIRGINIA DEPARTMENT OF MINES
OIL AND GAS DIVISION

W E L L R E C O R D

Permit No. Kan. 418

Gas Well

Kenna Quad.

CASING & TUBING

Company	Godfrey L.C-bot, Inc.	160.D.	24	24
Farm	Kathrine Bell Jarrett Acres	13 3/8	364	364
Location		10 3/4	1508	1508
Well No.	1 Elev. 654.9	8 5/8	1789	1789
District	Poca County Kanawha	7" O.D.	4705	4705
Surface	Not given	2 3/8	4739	4769
Mineral				
Drilling	Commenced Aug. 26, 1937			
	Completed Nov. 16, 1937			Shut in 11/16/37
Date Shot	Not shot			
Volume	14,700,000 Cu.Ft.		Perf. top 4766	
Rock Press.	1915# 24 hrs.		Perf. bot. 4772	

Formation Color		Hor	TOP	Base	Result	Formation Color	Hor	TOP	Base	Result
Surface			0	10		Oriskany Sand		4771	4781	
Red Rock			10	69						
Lime			69	85						
Sand			85	103						
Slate			103	167						
Sand			167	200		GAS	4772	8/10 W.	in 1"	
Slate			200	215	Water	4774	22/10 M.	in 7"	O.D.	
Lime			215	220	130'	4775	23/10 M.	in "	"	
Slate			220	235	1 Boiler	4776	44/10 M.	"	"	
Red Rock			235	248	pr. hr.	4779	50/10 M.	"	"	
Lime			248	265		4780	60/10 M.	"	"	
Red Rock			265	292		4781	63/10 M.	"	"	
Lime			292	306						
Sand			306	352						
Slate			352	398						
Sand			398	440		7" O.D. Casing Cemented in by Halliburton Oil Well Cementing Co.				
Slate			440	450						
Lime			450	468						
Slate			468	588						
Coal			588	592	N.S. block					
Slate			592	610						
Sand			610	663						
Slate			663	663						
Lime			663	678						
Slate			678	696						
Sand			696	710						
Slate			710	729						
Sand			729	751						
Slate			751	935						
Lime			935	945	Water					
Salt Sand			945	1140	1198'					
Lime			1140	1410	Hole Full					
Maxon Sand			1410	1466						
Slate			1466	1470						
Little Lime			1470	1490						
Pencil Cave			1490	1494						
Big Lime			1494	1660	Gas					
Kearner Sand			1660	1684	1600'	24/10 W. in 2" - 2 hrs.	2 decreased to 15/10 W. in			
Big Injun			1684	1732						
Slate			1732	1771						
Lime Shells			1771	1809						
Slate			1809	2000						
Slate&Shells			2000	2129	Sh. Oil					
Lime			2129	2147	1695					
Slate			2147	2405	Water					
Lime			2405	2440	1695					
Slate			2440	2775						
Slate&Shells			2775	3638	Jh. Gas					
Shale			3638	3780	2135	- not enough to gauge				
Shale	Brown		3780	3937						
Slate			3937	4300						
Shale	Lt. Brown		4300	4440	Gas					
Shale	Brown-dark		4440	4634	4445 -	2/10 W. in 1"				
Shale	Black		4634	4675						
Corniferous	Lime		4675	4771						