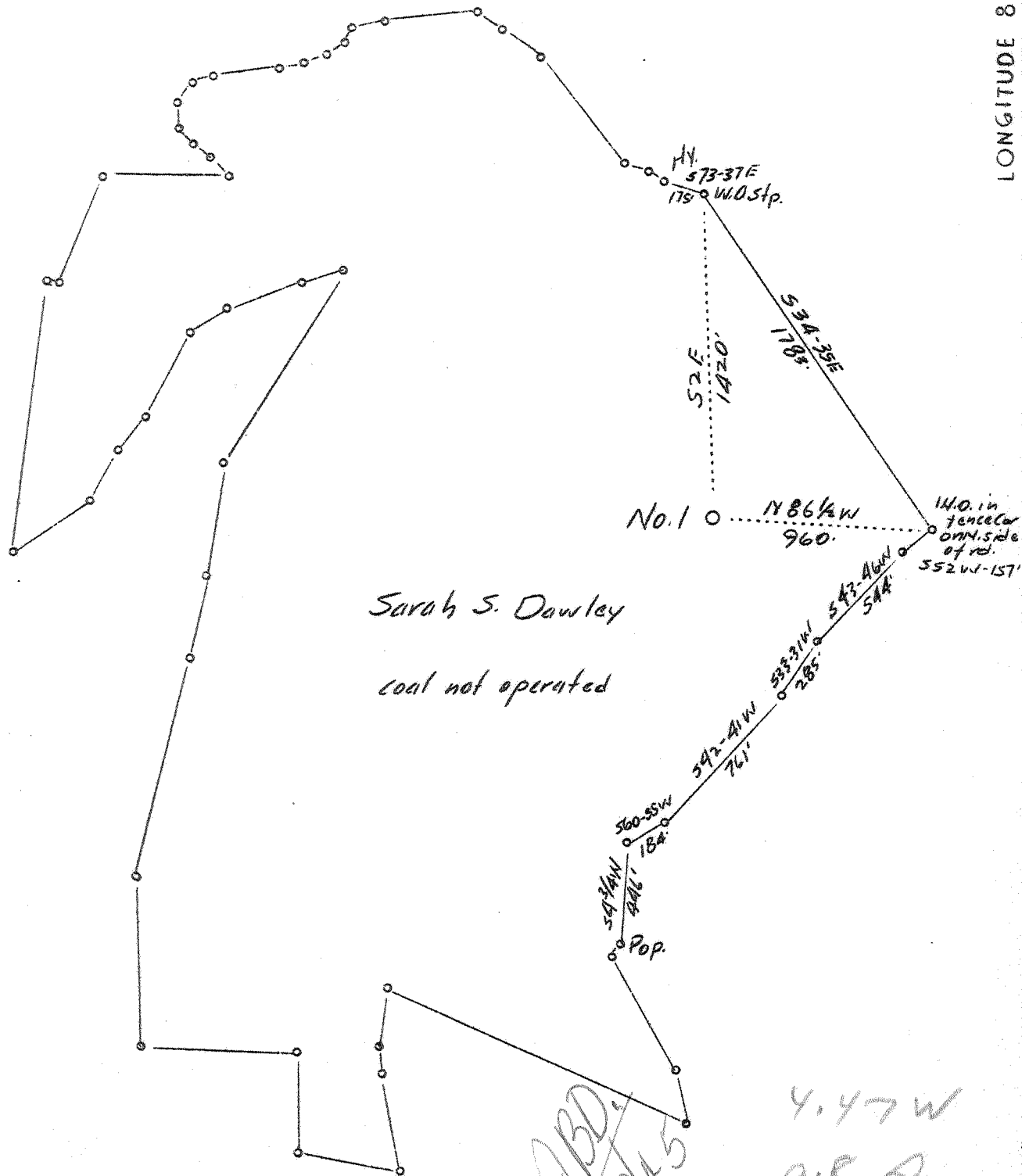


LATITUDE 38° 30'

LONGITUDE 81° 35'



Sarah S. Dawley  
coal not operated

P. 577

2 NW (J-5)

Company	Mullins Gas Co.
Address	Charleston, W.Va.
Farm	Sarah S. Dawley
Tract	Acres 170 Lease No.
Well (Farm) No.	1 Serial No.
Elevation (Barometer)	850 859.58'
Quadrangle	Charleston.
County	Kanawha District <del>Jason</del> Poca
Engineer	G.A. Cunningham
Engineer's Registration No.	659
File No.	Drawing No.
Date	July 12, 1937 Scale 1"-660'

STATE OF WEST VIRGINIA  
Department of Mines  
OIL AND GAS DIVISION  
CHARLESTON

WELL LOCATION MAP  
File No. KAN-422

+ Denotes location of well on United States Topographic Maps, scale 1:62,500, latitude and longitude lines being represented by border lines as shown.  
— Denotes one inch spaces on border line of original tracing.

6-6-192

(Deep Well)

WEST VIRGINIA DEPARTMENT OF MINES

OIL AND GAS DIVISION

W E L L R E C O R D

Permit No. Kan 422

Gas Well

Charleston Quad.

CASING & TUBING

Company Mullins Gas Co.  
 Address P.O.Box 28, Charleston, W.Va.  
 Farm Sarah S.Dawley Acres 170  
 Location Tappers Creek  
 Well No. 1 Elev. 850' 859.58' L.  
 District ~~W. Va.~~ Pocah County Kanawha  
 Surface Not given  
 Mineral Not given  
 Drilling Commenced Aug. 2, 1937  
 Completed Nov. 23, 1937  
 Date Shot Nov. 25, 1937 Depth Not given

10 410'6" 410'6"  
 8 5/8 1876 1876  
 7" O.D. 4352 4352  
 2(Tub) 4961

PACKERS

Kind Parmco  
 Size 8 5/8 x 10  
 Depth 1876  
 Cemented in.

Perf. top  
 Perf. bottom 14'

CASING CEMENTED: 7",  
 4352'

Formation Color <sup>Hor</sup> 5 Top Base Result Formation Color <sup>Hor</sup> 5 Top Base Result

Surface		0	20		Shale	Brown	4520	4730
Red Rock		20	60		Slate	Gray	4730	4765
Slate		60	80		Shale	Brown	4765	4815
Red Rock		80	170		→ Corniferous Lime		4815	4966
Sand		170	240		TOTAL DEPTH			4966
Red Rock		240	250					
Sand		250	325					
Red Rock		325	340					
Slate		340	360					
Sand		360	390					
Slate		390	400					
Sand		400	450					
Slate		450	560					
Sand		560	610					
Slate & Shells		610	675					
Sand		675	790					
Slate		790	815					
Sand		815	860					
Slate		860	870					
Slate & Shells		870	1060					
S. J. Sand		1060	1488	Sh. Gas				
Slate		1488	1490	1150'				
Maxon Sand		1490	1610					
Slate		1610	1820	Water				
Little Lime		1620	1630	1220				
Pencil Cave		1630	1632					
Big Lime		1632	1812					
Slate		1812	1815	Gas				
Injun Sand		1815	1863	1828				
Slate		1863	1865					
Sand		1865	1872					
Lime Shells		1872	1878					
Slate & Shells		1878	2270					
Shale	Brown	2270	2280					
Sand		2280	2290					
Lime		2290	2310					
Slate & Shells		2310	2750					
Sand		2750	2780					
Slate	White	2780	3300					
Slate & Shells		3300	3450					
Lime		3450	3690					
Slate & Shells		3690	3795					
Shale		3795	3815					
Slate		3815	3920					
Shale	Brown	3920	4085					
Slate	White	4085	4520					

See Vol. XVI, p. 577

WEST VIRGINIA DEPARTMENT OF MINES

OIL & GAS DIVISION

WELL RECORD

Permit No. Kan-422

Gas Well

Charleston Quad.

CASING & TUBING

Company Mullins Gas Co.  
 Address 507 Kan. Bk. & Tr. Bldg.,  
 Farm Sarah S. Dawley ACRES 170  
 Location Tappers Creek  
 Well No. One ELEV. ~~850~~ 859.58' L.  
 District *Poca* ~~Union~~ - Kanawha County  
 Surface & Mineral Sarah S. Dawley, Pocatigo, W.Va.  
 Drilling commenced Aug. 12, 1938  
 Drilling completed Aug. 19, 1938  
 Date shot 8-20-38 - Depth 4974-4984  
 Volume Increase 200,000 c.f.  
 Rock Pressure 1945 lbs. - hrs.  
 Water -

Formation Color <sup>Hor</sup> S Top Base Result Formation Color <sup>Hor</sup> S Top Base Result

Formation	Color	<sup>Hor</sup>	S	Top	Base	Result	Formation	Color	<sup>Hor</sup>	S	Top	Base	Result
Criskany	gray				4998								
Line	<i>Drisk</i> gray			4998	5013	Gas						4974	
					5013	Total Depth							
<i>See Vol. VII, p. 577</i>													
DUPLICATE - RECORD OF DEEPER DRILLING Requested by letter dated Feb. 24, 1939													