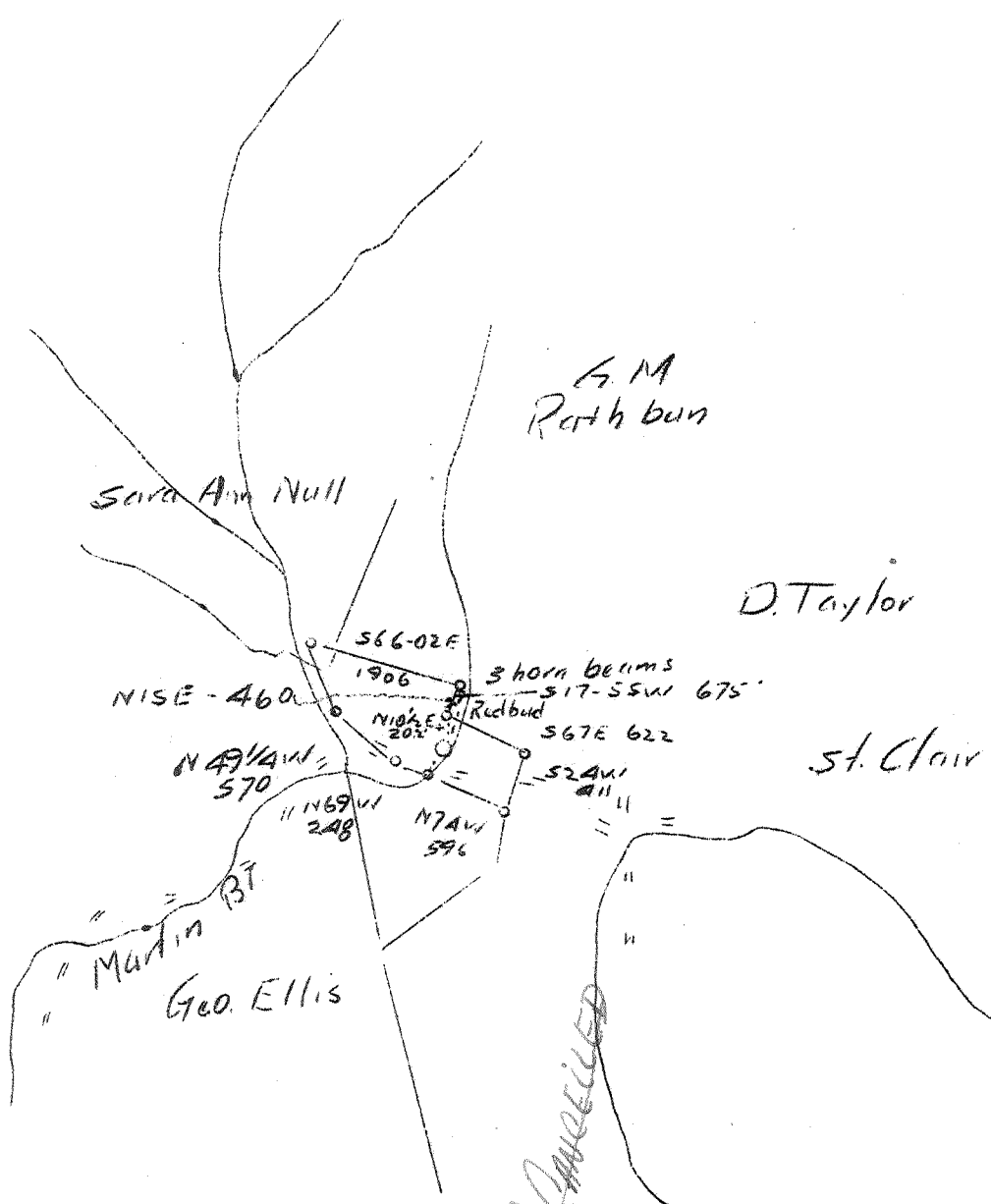


LATITUDE 38° 30'

LONGITUDE 81° 40'



457 P. CANCELLED
9/4/42
A.B.D.
5/4/43
1.53 9

Company Godfrey L. Cabot, Inc.
 Address 600 Union Bldg., Charleston, W. Va.
 Farm Fred Strasser et al
 Tract Acres 21.45 Lease No. _____
 Well (Farm) No. 1 Serial No. 915
 Elevation (Spirit Level) 782.85
 Quadrangle Charleston
 Engineer O.L. Fitz Randolph
 County Kanawha District Union
 Engineer's Registration No. 806
 File No. _____ Drawing No. _____
 Date 7-13/37 Scale 1"-1320'

STATE OF WEST VIRGINIA
 Department of Mines
 OIL AND GAS DIVISION
 CHARLESTON

WELL LOCATION MAP

File No. KAN-457

+ Denotes location of well on United States Topographic Maps, scale 1 to 62,500, latitude and longitude lines being represented by border lines as shown.
 — Denotes one inch spaces on border line of original tracing.

6-6 192

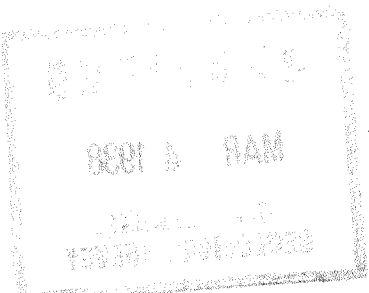
Fred Strasser #1, Serial #915
 Union District, Kanawha County, W. Va.
 KAN 457
 Drilling commenced--Sept. 27, 1937
 Drilling completed--Dec. 21, 1937
 Elevation - 732.85

CASING AND TUBING		
Size	Used in Drilling	Left in Well
15-3/8"	234'	
10-3/4"	1587'	
8-1/4"	1889'	
6-5/8"	4794'	

INITIAL OPEN FLOW
 15/10 Water in 7" - 2,100 M.C.F.
 Shot 12/22/37 - 23 quarts
 Rock Pressure - 1945# 24 hrs.
 Tubed 12/21/37

Stratigraphic Unit	Color	Top Depth	Bottom Depth	Notes
Red Rock	Red	0	110	Fresh Water 90'
Sand	Gray	110	160	
Slate	Gray	160	190	
Red Rock	Red	190	210	
Slate	Gray	210	230	
Sand	Gray	230	240	
Slate	Gray	240	260	
Sand	Gray	260	272	
Red Rock	Red	272	282	
Slate	Blue	282	390	
Sand	Gray	390	596	7" O.D. casing cemented in by Halliburton Oil Well Cementing Co.
Slate	Gray	396	516	
Sand	White	516	526	
Slate	Gray	526	575	
Sand	White	575	610	
Slate	Black	610	631	
Sand	White	631	745	
Slate	Black	745	767	
Sand	White	767	795	
Slate	Gray	795	859	
Sand	White	859	884	6 3/8" casing cemented in by Halliburton Oil Well Cementing Co.
Slate	Black	884	904	
Sand	Gray	904	909	
Slate	Black	909	977	
Salt Sand	White	977	1066	
Slate Break	Gray	1066	1096	
Salt Sand	White	1096	1342	
Lime	Black	1342	1352	
Marion Sand	White	1352	1440	
Slate	Gray	1440	1452	
Black Lime	Hard	1452	1459	Salt Water 1145'
Red Rock		1459	1471	
Slate	Gray	1471	1475	
Little Lime		1475	1487	
Sand	White	1487	1497	
Slate	Gray	1497	1566	
Big Lime		1566	1736	
Keener Sand		1736	1752	
Slate		1752	1758	
Injun Sand		1758	1843	
Slate		1843	1868	Hole full
Black Lime		1868	1900	
Slate & Shells		1900	2212	
Shale	Brown	2212	2227	
Shale & Shells		2227	3450	
Shale	Brown	3450	3548	
Slate & Shells		3548	3800	
Brown Shale		3800	4010	
Slate		4010	4452	
Brown Shale		4452	4764	
Brown Shale		4452	4764	Gas 1736' Show Salt Water 1784-1804 5 bailers per hr.
Coniferous Lime		4764	4869	
Crabany Sand		4869		
			4872	
			4875	
			4887-4891	
			5/10 Water in 2"	
			18/10 Water in 7" O.D.	
Total Depth		4902		

Shot Dec. 22 with 23 qts. from 4870-4893.
 Test before shot 45/10 water in 2" (320 M)
 Test 50 minutes after shot, 100/10 water in 7" O.D.
 (5,000 M)



WEST VIRGINIA DEPARTMENT OF MINES
OIL AND GAS DIVISION

W E L L R E C O R D

Permit No. Kan-457

Gas Well

Charleston Quad.

CASING & TUBING

Company	Godfrey L. Cabot, Inc.	13 3/8	234
Address		10 3/4	1587
Farm	Fred Strasser Acres	8 1/2	1389
Location		6 5/8	4794
Well No.	1		
	Elev. 782.85		
District	Union		
	County Kanawha		
Drilling	Commenced	Shut in 12-21-37	
	Sept. 27, 1937		
	Completed	7" O.D. Casing cemented	
	Dec. 21, 1937	in by Halliburton Oil	
Date Shot	12-22-37	Well Cementing Co.	
	Depth (23 qts.)	8 1/2" casing cemented in	
Volume	2,100,000 Cu.Ft.	by Halliburton Oil Well	
Rock Press.	1945# 24 hrs.	Cementing Co.	

Formation Color		Top	Base	Result	Formation Color		Top	Base	Result
Red Rock	Red	0	110	Water 90'	Shot Dec. 22 with 23 qts. from 4870-4895. Test B.S. 45/10 W. in 2" (320M Test 30 A.S. 100/10 W. in 7" O.D. (5,000 M.)				
Sand	Gray	110	160						
Slate	Gray	160	190						
Red Rock	Red	190	210						
Slate	Gray	210	230						
Sand	Gray	230	240						
Slate	Gray	240	260						
Slate	Gray	260	272						
Red Rock	Red	272	282						
Slate	Blue	282	390						
Sand	Gray	390	396						
Slate	Gray	396	518						
Sand	White	518	526						
Slate	Gray	526	575						
Sand	White	575	610						
Slate	Black	610	631						
Sand	White	631	745						
Slate	Black	745	767						
Sand	White	767	795						
Slate	Gray	795	859						
Sand	White	859	864						
Slate	Black	864	904						
Sand	Gray	904	909						
Slate	Black	909	977						
Salt Sand	White	977	1066						
Slate Break	Gray	1066	1096	Water					
Salt Sand	White	1096	1342	1145'					
Lime	Black	1342	1352	H.F.					
Maxon Sand	White	1352	1440						
Slate	Gray	1440	1452						
Lime	Black	1452	1459	Hard					
Red Rock		1459	1471						
Slate	Gray	1471	1475						
Little Lime		1475	1487						
Sand	White	1487	1497						
Slate	Gray	1497	1566						
Big Lime		1566	1736	Gas show					
Keener Sand		1736	1752	1736					
Slate		1752	1758						
Injun Sand		1758	1843	Water					
Slate		1843	1868	1784-					
Lime	Black	1868	1900	1804 - 5 bailers pr. hr.					
Slate & Shells		1900	2212						
Shale	Brown	2212	2227	Gas					
Shale & Shells		2227	3450	4872					
Shale	Brown	3450	3548	Gas					
Slate & Shells		3548	3800	4875 5/10 W. in 2"					
Shale	Brown	3800	4010	Gas					
Slate		4010	4452	4887-					
Shale	Brown	4452	4764	4891 18/10 W. in 7" o.D.					
Corniferous Lime		4764	4869						
Oriskany Sand		4869							
TOTAL DEPTH			4902						