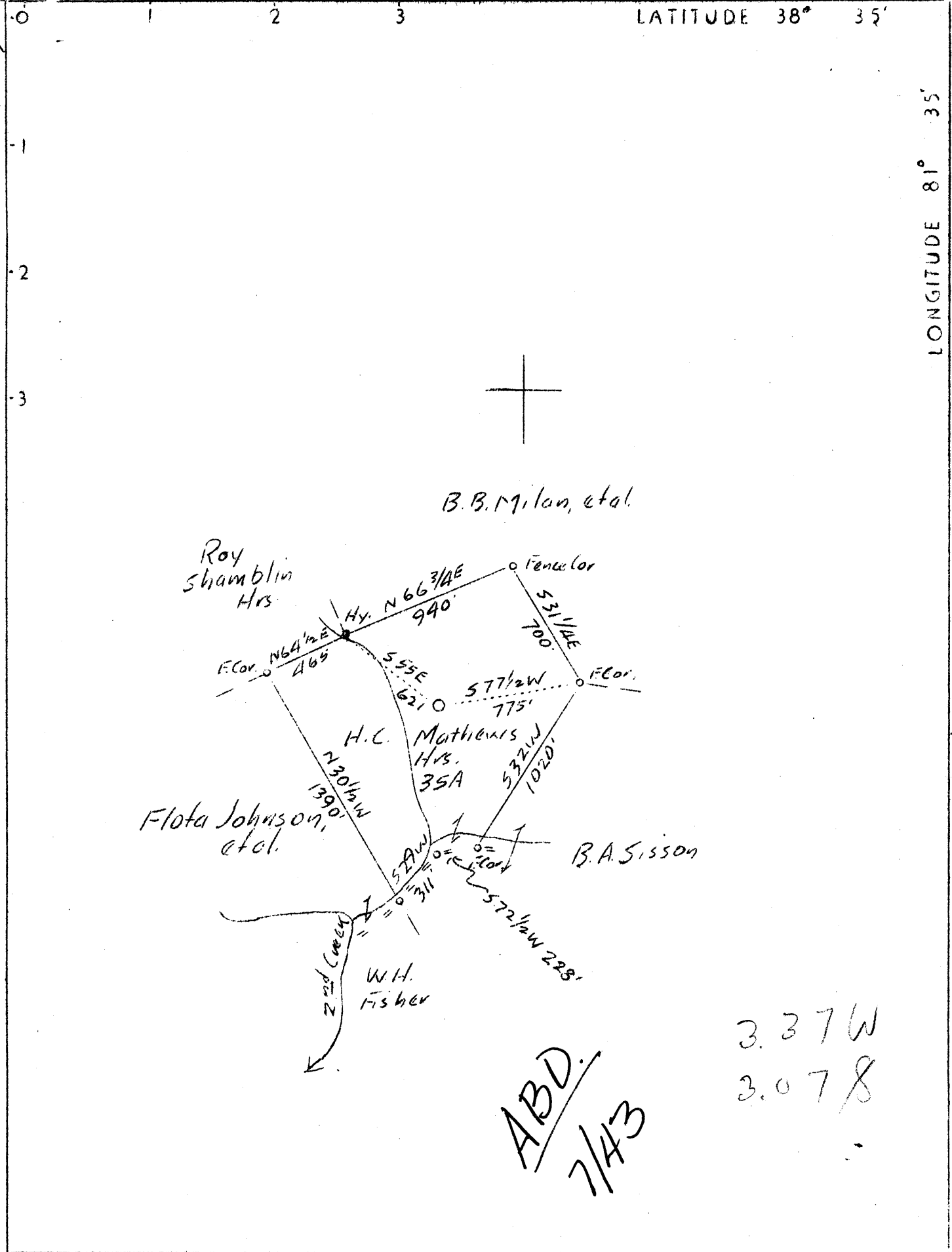


LATITUDE 38° 35'

LONGITUDE 81° 35'



3.37W
3.078

ABD.
7/43

Company	Liosag Fuel Co.
Address	Charleston, W.Va.
Farm	H.C.Mathews Hrs.
Tract	1 Acres 35 Lease No.
Well (Farm) No.	1 Serial No.
Elevation (Spirit Level)	789.55
Quadrangle	Kenna
County	Kanawha District Poca
Engineer	Paul E.Joachim
Engineer's Registration No.	669
File No.	Drawing No.
Date	Nov. 26, 1937 Scale 1"-660'

STATE OF WEST VIRGINIA
 Department of Mines
 OIL AND GAS DIVISION
 CHARLESTON

WELL LOCATION MAP

File No. KAN-500

+ Denotes location of well on United States Topographic Maps, scale 1 to 62,500, latitude and longitude lines being represented by border lines as shown.

- Denotes one inch spaces on border line of original tracing.

WEST VIRGINIA DEPARTMENT OF MINES

OIL & GAS DIVISION

W E L L R E C O R D

Permit No. Kan-500

Gas Well

Kenna Quad.

CASING & TUBING

Company	Liosag Fuel Co.	13"	28'10"
Address	511 Cha. Nat.Bk. Charleston, W.Va.	10	440
Farm	H. C. Mathews Heirs ACRES 35	8-1/4	1949
Location	Second Creek	5-1/2 OD	4826
Well No.	One ELEV. 781.25		
District	Poca County Kanawha		
Surface & Mineral Address	H. C. Mathews Hrs. Sissonville, W. Va.		
Drilling commenced	Feb. 15, 1938		
Drilling completed	-		
Shot	-		
Open Flow	62/10ths Water in 7"		
	22/10ths Merc. in 7"		
Volume	8,269,000 c.f.		
Rock Pressure	-		
Water	-		

Formation Color ^{HAR} TOP Base Result Formation Color ^{HAR} TOP Base Result

Formation	Color	^{HAR} TOP	Base	Result	Formation	Color	^{HAR} TOP	Base	Result
Surface		00	28		Brown Shale		4585	4688	
Rock		28	37		White Slate		4688	4700	Show of
Gray Mud		37	84		Brown Shale		4700	4875	Gas 4820
Green Mud		84	95		Corniferous		4875	4980	Gas at
Sand		95	114		Oriskany Sand		4980		4980-4989
Gray Slate		114	140		Total Depth			4989	
Blue Rock		140	150						
Red Rock		150	175						
Blue Rock		175	214						
Red Rock		214	260						
Brown Slate		260	280						
Blue Slate		280	315						
Red Rock		315	348						
Blue Rock		348	360						
White Rock		360	386						
Red Rock		386	400						
Blue Rock		400	440						
Red Rock		440	450						
Blue Rock		450	455						
Red Rock		455	485						
Blue Rock		485	520						
Sand		520	557						
Blue Slate		557	595						
Sand		595	620						
Slate		620	625						
Sand		625	657	2 bailers water per hour @ 650'					
Slate		657	670						
Big Dunkard		670	736						
Blk Slate Shell		736	766						
White Slate		766	810						
Bl, Slate & Shell		810	825						
Sand		825	885						
Blk. Slate & Shell		885	1233						
Limy Salt Sand		1233	1578	Salt water 1310' 2 Hrs. per hr. Hole full @ 1340'					
Coal		1578	1580						
Maxton Sand		1580	1639						
Blk. Slate		1639	1655						
Little Lime		1655	1674						
Pencil Cave		1674	1680						
Big Lime		1680	1835	Gas show 1780'					
Big Injun		1835	1888						
Lime		1888	1913						
Slate		1913	1937						
Shell		1937	1955						
Slate & Lime Shell		1955	2298						
Brown Shale		2298	2308						
Berea Shell		2308	2316						
Sh. Slate & Shells		2316	3550						
Shelly Brown Shale		3550	3630						
Shell White Slate		3630	3800						
Brown Slate		3800	4135						
White Slate		4135	4585						