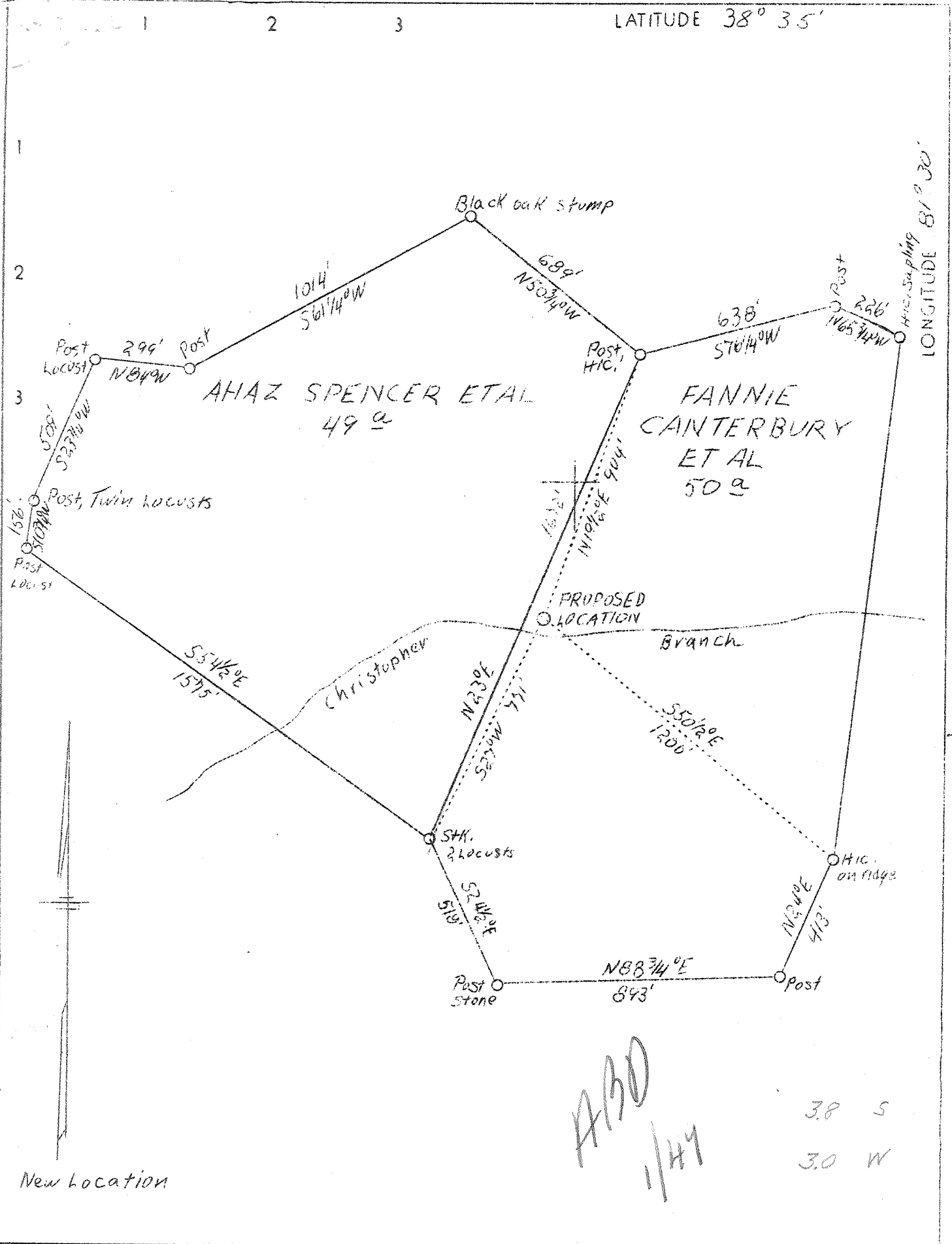


5M



ASD  
1/4/47

38 S  
30 W

Company	West Virginia Gas Corporation
Address	401 Union Bldg., Charleston, W.Va.
Farm	Spencer - Canterbury
Tract	Acres 99 Lease No. 266 & 267
Well(Farm)No.	One Serial No. 0-33
Elevation(Spirit Level)	908.7 (Stadia)
Quadrangle	Kenna S. E. SE
County	Kanawha District Poca
Engineer	Robert S. Hyde
Engineer's Registration No.	648
File No.	3 Drawing No. W.O. 238
Date	May 18, 1938 Scale 1" = 400'

STATE OF WEST VIRGINIA  
 Department of Mines  
 OIL & GAS DIVISION  
 Charleston

WELL LOCATION MAP

File No. Kan-545

Denotes location of well on U. S. Topographic Maps, scale 1 to 62,500, latitude and longitude lines being represented by border lines as shown.

Denotes one inch spaces on border line of original tracing.

