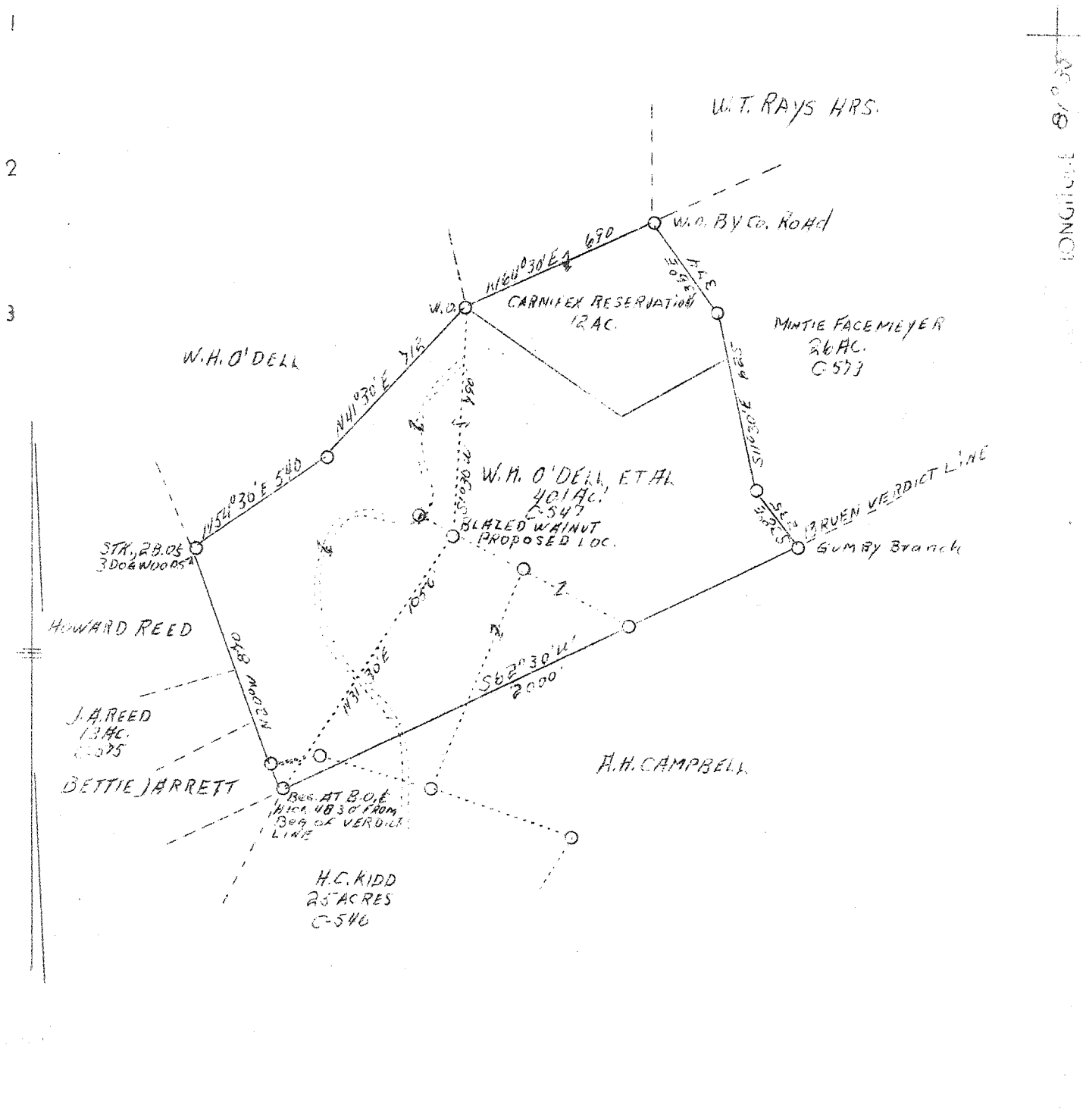


M 54

P

1 2 3 LATITUDE 38° 35'



LONGITUDE 81° 35'

New Location

1.2 S
0.3 W

P. 472 B NE (I-5)

Company Columbian Carbon Co.
 Address Box 1240, Charleston, W. Va.
 Farm W. H. O'Dell, Minnie Facemeyer,
 J. A. Reed & H. C. Kidd
 Acres 104.1
 Lease No. C-546, C-547, C-573, C-575
 Well (Farm) No. One
 Serial No. GW- 417 919.91 75'
 Elevation 980 Approx. (Spirit Level)
 Quadrangle Kenna -8- S.E. S.C
 County Kanawha
 District Poca
 Engineer C. A. Branham
 Eng. Reg. No. 683
 Date June 13, 1933
 Scale 1" = 500'

STATE OF WEST VIRGINIA
 Department of Mines
 OIL & GAS DIVISION
 Charleston

WELL LOCATION MAP
 File No. Kan-553

X denotes location of well on U. S. Topographic Maps, scale 1 to 62,500, latitude and longitude lines being represented by border lines as shown.

- Denotes one inch spaces on border line of original tracing.

✓ Deep Well

WEST VIRGINIA DEPARTMENT OF MINES

OIL & GAS DIVISION

WELL RECORD

Permit No. Kan-553
Kenna 8 - S.E. Quad.

Gas Well

CASING & TUBING

Company	Columbian Carbon Co.	14	60	60
Address	Box 1240, Charleston, W. Va.	10-3/4	821-12	pulled
Farm	H. C. Kidd, et al ACRES 104.1	8-5/8	2014-1	2014-1
Location	Pocatalico River	6-5/8	5081-7	5081-7
Well No.	1 (GW-417) ELMV. 919.91 DF 900 <i>919.91 is probably correct - O.H.H.</i>			
District	Poca County Kanawha <i>75 topo ULA</i>			No packer
Surface & Mineral	H. C. Kidd, et al, Sissonville, W.Va. <i>12/2/27</i>			
Drilling commenced	7/2/38			Casing cemented - see
Drilling completed	10/24/38			below
Date shot	10/25/38 - Depth 5177-5197			
Volume	22,120,000 c.f.			
Rock Pressure	1830 lbs. 4 days			
Salt Water	1380			

Formation	Color	Top	Base	Result	Formation	Color	Top	Base	Result
Sand		0	30		Black Lime		5202	5209	
Red Rock		30	70		Oriskany Sand		5209	5237	SLM
Slate		70	90		Lime		5237	5243	SLM
Red Rock		90	95		Total Depth			5243	SLM
Shells		95	125						
Red Rock		125	170		Gas 1875				
Slate		170	230		" 2385-90 show				
Red Rock		230	245		Pay: 5180-5184				
Slate		245	280						
Sand		280	330						
Slate		330	395						
Sand		395	405						
Red Rock		405	520						
Slate		520	565						
Red Rock		565	725						
Sand		725	755						
Slate & Shells		755	780						
Sand		780	820						
Slate & Shells		820	850						
Sand		850	915						
Slate		915	940						
Sand		940	985						
Slate		985	1020						
Sand		1020	1100						
Slate		1100	1160						
Sand		1160	1190						
Slate		1190	1360						
1st Salt Sand		1360	1470	W-1380					
Slate		1470	1472	Rises 400'					
2nd Salt Sand		1472	1745						
Little Lime		1745	1773						
Slate		1773	1780	SLM					
Big Lime	SLM-1780	1780	1908	SLM					
Big Injun	SLM-1908	1908	1991	SLM					
Slate	SLM-1991	1991	1994	SLM					
Lime Shell	SLM-1994	1994	2003						
Slate & Shells		2003	2380						
Brown Shale		2380	2385						
Berea Shell		2385	2390						
Slate & Shells		2390	3615						
Brown Shale		3615	3375						
Slate & Shells		3675	4000						
Brown Shale		4000	4250						
Slate & Shells		4250	4715						
Brown Shale		4715	4960						
Slate		4960	4980						
Dark Brown Shale		4980	5043	SLM					
Corniferous Lime	SLM-5043	5043	5159	SLM					
Oriskany Sand	SLM-5159	5159	5202						

5043