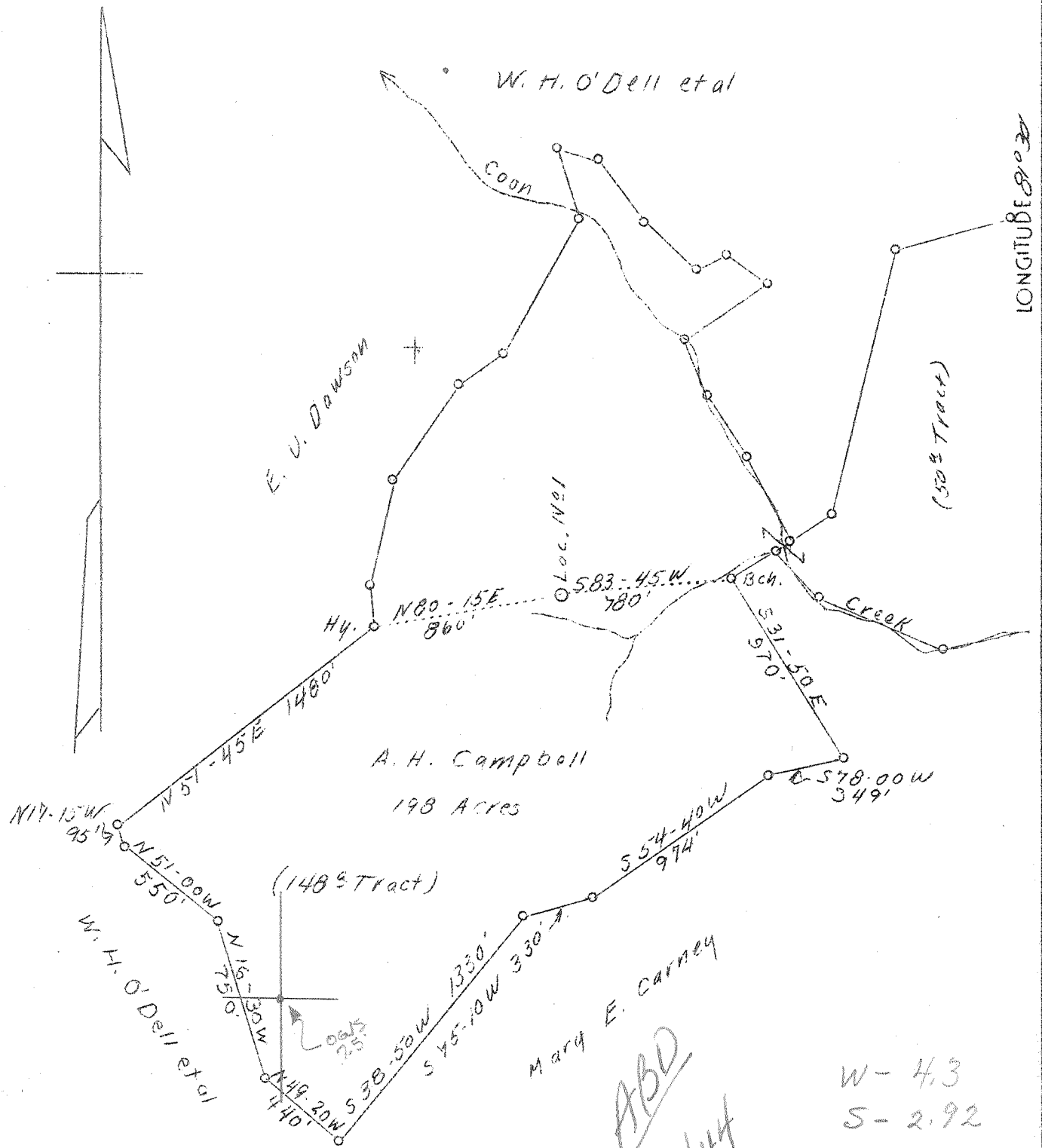


LATITUDE 38° 35'

LONGITUDE 81° 30'



0.848 7.5' loc 15'  
 38°35' 2.82s 2.82s  
 81°32'30" 1.98W 4.23W

New location - Dek

ABD  
 9/44

W-4.3  
 S-2.92

Company	United Carbon Co.,
Address	Charleston, W. Va.
Farm	A. H. Campbell
Acres	198
Lease No.	2504
Well (Farm) No.	One
Serial No.	787
Elevation (SL)	820
Quadrangle	Kenna S.E.
County	Kanawha
District	Poca
Engineer	C. B. Wilson
Eng. Reg. No.	494
Date	Jan. 14, 1939
Scale	1" - 660'

STATE OF WEST VIRGINIA  
 Department of Mines  
 OIL & GAS DIVISION  
 Charleston

WELL LOCATION MAP

File No. Kan-609

x Denotes location of well on U. S. Topographic Maps, scale 1 to 62,500, latitude and longitude lines being represented by border lines as shown.

- Denotes one inch spaces on border line of original tracing.

WEST VIRGINIA DEPARTMENT OF MINES

OIL & GAS DIVISION

W E L L R E C O R D

Permit No. Kan-609

Gas Well

Konna Quad.

CASING & TUBING

Company	United Carbon Co.,	10	507	507
Address	901 Union Bldg., Charleston, W. Va.	8-1/4	1805	1805
Farm	A. H. Campbell ACRES 198	6-5/8	4886	4886
Location	Raccoon Creek	2		4986
Well No.	1 ELEV. 820			
District	Poca, Kanawha County			
Surface & Min.	A. H. Campbell, Sissonville, W.Va.	CASING CEMENTED:		
Commenced	Feb. 27, 1939	Size	Feet	Date
Completed	June 5, 1939	8-5/8	680	4/18/39
Shot	Not shot	6-5/8	250	5/25/39
Open Flow	52/10ths Merc. in 6-5/8 OD 24#			
Volume	9,830,000 c.f.			
Rock Pressure	1150 lbs. 48 hrs.			
Salt Water	1200 feet			

*Formation Color* <sup>Mar</sup> *Top Base Result*      *Formation Color* <sup>Mar</sup> *Top Base Result*

Soil		0	16						
Sand		16	36						
Slate		36	50						
Sand		50	110						
Red Rock		110	230						
Slate & Shells		230	350						
Yellow Rock		350	365						
Sand		365	410						
Slate & Shells		410	440						
Red Rock		475	606						
Slate & Shells		606	631						
Sand		631	720						
Black Slate		720	743						
Sand		743	845						
Slate		845	900						
Lime		900	980						
Sand		980	1005						
Black Slate		1005	1057						
Sand		1057	1082						
Slate		1082	1095						
Sand		1095	1125						
Slate		1125	1135						
Lime		1135	1140						
Salt Sand		1140	1560	W 1200 HF					
Little Lime		1560	1600						
Big Lime		1600	1740						
Injun Sand		1740	1775						
Slate		1775	1780						
Squaw		1780	1785						
Slate		1785	3395						
Brown Shale		3395	3460						
Slate & Shell		3460	3960						
Brown Shale		3860	3960						
Slate & shells		3960	4430						
Brown Shale		4430	4720						
White slate		4720	4760						
Brown Shale		4760	4800						
Black Shale		4800	4868						
Corniferous Lime		4868	4974	Gas	3925	Show			
Oriskany Sand		4974	4997						
Total Depth			4997	Gas pay	4982 to 4998				