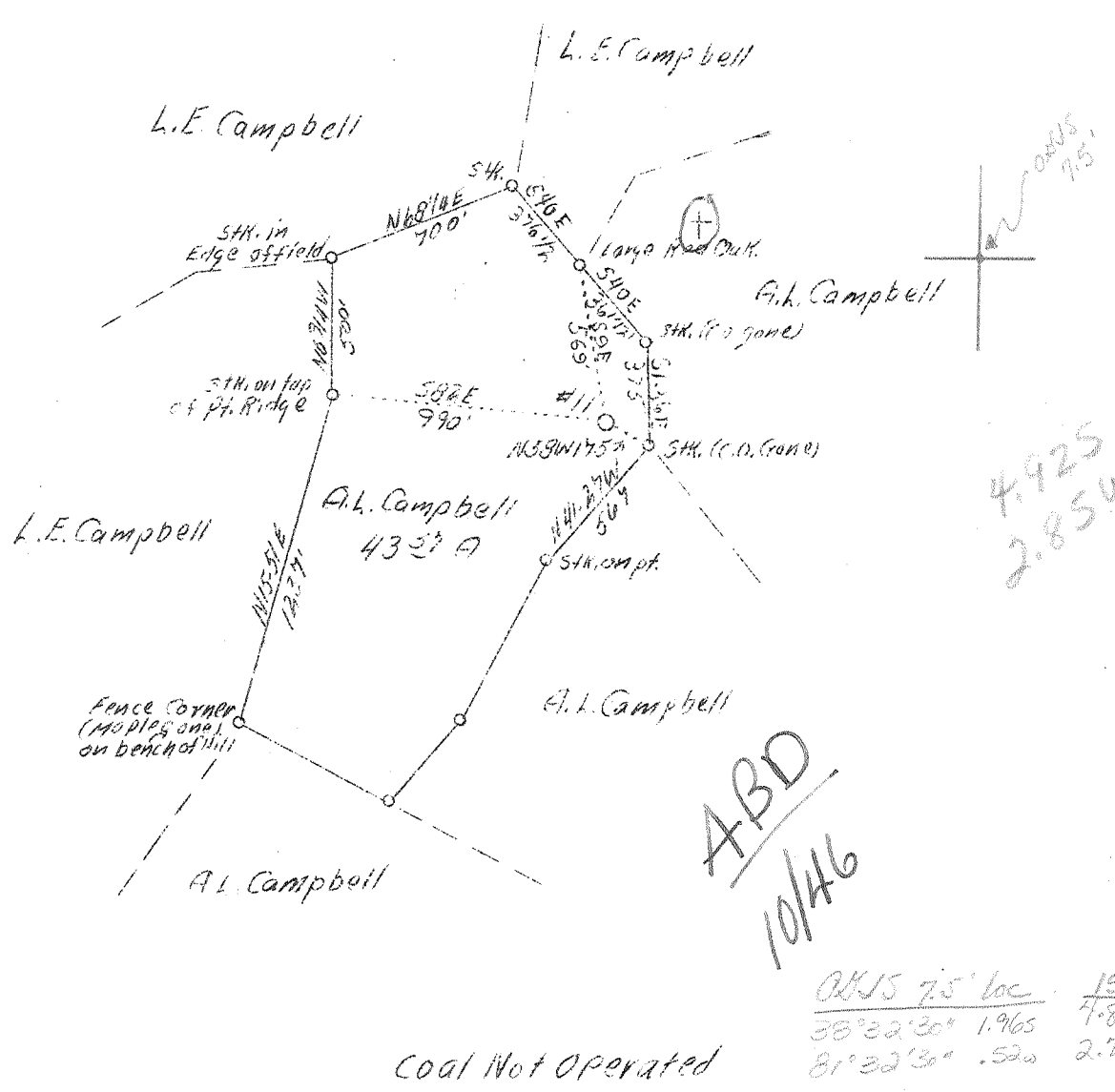


LATITUDE 38° 35'

38 32 30 - 7.5'

LONGITUDE 81° 32' 30"



Company Brawley-Reid Oil & Gas Co.  
 Address Charleston, W.Va.  
 Farm A.L. Campbell  
 Acres 43.57  
 Lease No. 36  
 Serial No. 11  
 Well (Farm) No. 1  
 El. (S.L.) 1174.33 ?  
 Quadrangle Konna SE  
 County Kanawha  
 District Poca  
 Eng. L. H. Talbot  
 Eng. Reg. No. 412  
 Scale 1" = 360'

STATE OF WEST VIRGINIA  
 Department of Mines  
 OIL AND GAS DIVISION  
 Charleston

WELL LOCATION MAP

File No. Kan-624

x Denotes location of well on U.S. Topographic Maps, scale 1 to 62,500 latitude and longitude lines being represented by border lines as shown.

- Denotes one inch spaces on border line of original tracing.

WEST VIRGINIA DEPARTMENT OF MINES

OIL & GAS DIVISION

WELL RECORD

Permit No. Kan-624

Gas Well

Kenna Quad.

CASING & TUBING

Company	United Fuel Gas Co.	13	16	16
Address	Charleston, W. Va.	10	687	687
Farm	A. L. Campbell ACRES 43.57	8-5/8	2017	2017
Location	Grapevine Creek <i>← this is closer</i>	7	5128	5128
Well No.	4855 ELEV. 1120.50 <i>actual from</i>			
District	Poca - Kanawha County <i>7.5' topo</i>			
Surface & Mineral	A. L. Campbell <i>is 1100</i>			
Address	? <i>VIA 12/20/87</i>			
Commenced	May 10, 1939			
Completed	Sept. 19, 1939			
Shot	9/20/39 - Depth 5231			
Volume	Gas Well <i>3181 mcf, 1050 lbs Rk Press Vol YVI</i>			
Fresh Water	513			
Salt Water	1444			

Formation	Color	<sup>H<sub>0</sub></sup> S	Top	Base	Result	Formation	Color	<sup>H<sub>0</sub></sup> S	Top	Base	Result
Soil			0	22		Brown Shale			3620	3640	
Slate			22	63		Lime Shells			3640	3918	
Sand			63	97		Brown Shale			3918	4279	
Slate			97	112		Slate			4279	4760	
Sand			112	130		Brown Shale			4760	4840	
Red Rock			130	167		White Slate			4840	5017	
Slate			167	186		Black Shale			5017	5113	
Sand			186	234		Corniferous Lime			5113	5232	
Slate			234	273		Oriskany Sand			5232	5258	
Red Rock			273	359		Total Depth			5258		
Slate			359	398							
Lime			398	414		Gas			5236-5244	Pay	
Red Rock			414	460		"			5236-5244		
Slate			460	485		"			5246		
Sand			485	502		"			5251		
Red Rock			502	524	W 513	"			5254		
					5 blr. hr.	"			5258		
Lime			524	561							
Slate & Shells			561	617							
Sand			617	697							
Slate			697	725							
Lime Shells			725	767							
Sand			767	796							
Black Shale			796	861							
Sand			861	1018							
Slate			1018	1057							
Sand			1057	1109							
Shale			1109	1256							
Sand			1256	1282							
Slate & Shells			1282	1377							
Salt Sand			1377	1656	W 1444 Hole full						
Slate			1656	1662							
Sand			1662	1703							
Slate			1703	1749							
Maxon Sand			1749	1763							
Slate			1763	1781							
Little Lime			1781	1811							
Slate			1811	1816							
Lime Shells			1816	1820							
Pencil Cave			1820	1825							
Big Lime			1825	1980							
Injun			1980	1993							
Slate			1993	1997							
Lime			1997	2033							
Slate & Shells			2033	2279							
Weir			2279	2284	G 2280 show						
Slate & Shells			2284	3620							

WEST VIRGINIA DEPARTMENT OF MINES

OIL & GAS DIVISION

WELL RECORD

Permit No. Kan-624-689

Gas Well

Kenna Quad.

CASING & TUBING

Company Brawley-Reid Oil & Gas Co. 10 686 pulled  
 United Fuel Gas Co. wire cut left in  
 Address Charleston, W. Va. 7" left in  
 Farm A. L. Campbell ACRES 43.57  
 Location Grapevine Creek CASING CEMENTED:  
 Well No. 11 ELEV. 1174.83 3-5/8 2017 6/22/39  
 District Pocca - Kanawha County  
 Surface A. L. Campbell, Sissonville, W.Va.  
 Mineral 1/2 A.L.Campbell, 1/2 A.E. Cavender, etal  
 Commenced May 10, 1939  
 Completed Sept. 21, 1939  
 Date shot 9/20/39 - depth 5258  
 Open Flow 4/10ths Merc. in - inch  
 Volume 5,181,000 c.f.  
 Rock Pressure 1050 lbs. 20 hrs.  
 Water -

Formation	Color	Top	Base	Result	Formation	Color	Top	Base	Result
Soil		0	22	16' Wood conductor	Lime & Shells		3647	3918	
Slate		22	63		Brown Shale		3918	4279	
Sand		63	97		White Slate		4279	4760	
Slate		97	112		Brown Shale		4760	4840	
Sand		112	130		White Slate		4840	5017	
R. Rock		130	167		Black Shale		5017	5070	
Slate		167	186	W 218 5 blrs. F.Water	Brown Shale		5070	5113	
					Corniferous		5113	5232	
Sand		136	235		22 lb. casing	5128	-7" O.D.		
Slate		234	273		Oriskany		5232		
R. Rock		273	359		Gas		5236		
Slate		359	398		Total Depth		5258		
Lime		398	414		Steel Line run at		5235		
R. Rock		414	460						
Slate		460	485						
Sand		485	502						
R. Rock		502	524						
Lime		524	561						
Slate & Shells		561	617						
Sand		617	697	10" casing pulled out					
Slate		697	725						
Lime Shells		725	767						
Sand		767	796						
Black Shale		796	861						
Sand		861	1018						
Slate		1018	1058						
Sand		1058	1109						
Slate		1109	1256						
Sand		1256	1282						
Slate & Shells		1282	1377						
Salt Sand		1377	1656	Hole full salt water 1444					
Slate		1656	1662						
Sand		1662	1703						
Slate		1703	1747						
Maxin Sand		1747	1763						
Slate		1763	1781						
Little Lime		1781	1811						
Slate		1811	1816						
Lime Shell		1816	1820						
Pencil Cave		1820	1825						
Big Lime		1825	1980						
Injun Sand		1980	1993						
Slate		1993	1997	8 1/2 casing 2017 steel line cemented in					
Lime		1997	2033						
Slate & Shells		2033	2279						
Wior Shells		2279	2284	Some gas					
Slate & Shells		2284	3620						
Brown Shale		3620	3640						

*Log @ Old location*