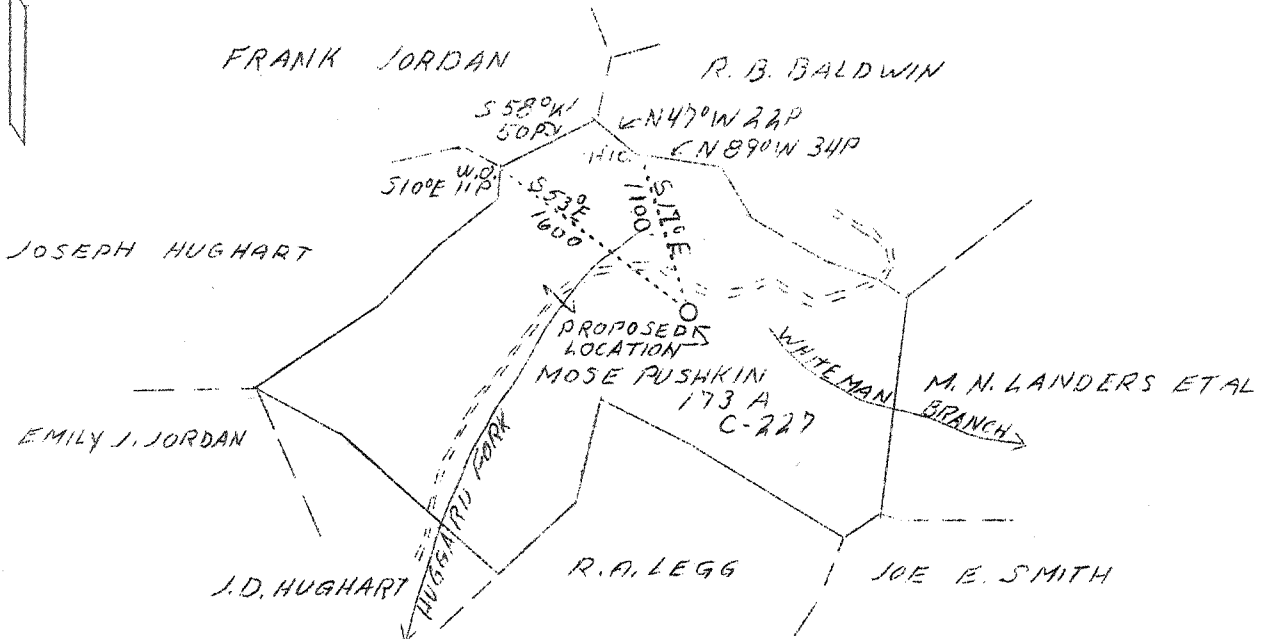


LATITUDE 38°30'

LONGITUDE 81°30'



3.45 W
~~3.5 W~~
~~4.5 S~~
~~0.35 S~~

7.5 min OGIS Loc ⁵⁰⁶ 15 min
 38° 30' .065 .065
 81° 32' 30" .80W 3.06W

New Location

<p>Company Columbian Carbon Co. Address Box 1240, Charleston, W.Va. Farm Mose Pushkin Acres 173 Lease No. C-227 Well (Farm) No. 1 Elevation (SL) 1026.5 - L. Quadrangle Charleston N. E. County Kanawha District Elk Engineer J. N. Sell Eng. Reg. No. 772 Date May 9, 1939 Scale 1" - 1320'</p>	<p>STATE OF WEST VIRGINIA Department of Mines OIL & GAS DIVISION Charleston</p> <p>WELL LOCATION MAP File No. <u>KAN-629</u></p> <p>x Denotes location of well on U. S. Topographic Maps, scale 1 to 62,500, latitude and longitude lines being represented by border lines as shown.</p> <p>- Denotes one inch spaces on border line of original tracing.</p>
------------------------------------------------------------------------------------------------------------------------------------------------------------------------------------------------------------------------------------------------------------------------------------------------------------------------------------------------------------------------------------------------------------------------------------------------------------------------------------------------------------------------------------------------------------------------------------------------------------------------------------------------------------------------------------------------------------------------------------	--------------------------------------------------------------------------------------------------------------------------------------------------------------------------------------------------------------------------------------------------------------------------------------------------------------------------------------------------------------------------------------------------------------------------------------------------------

6-6192

WEST VIRGINIA DEPARTMENT OF MINES

OIL & GAS DIVISION

WELL RECORD

Permit No. Kan-629

Gas Well

Charleston N. E. Quad.

CASING & TUBING

Company	Columbian Carbon Co.	14	44-11	44-11
Address	Box 1240, Charleston, W. Va.	10-3/4	514-1	pulled
Farm	Mose Pushkin ACRES 173	8-5/8	1743-5	1743-5
Location	Aarons Fork	6-5/8	5069-7	5069-7
Well No.	1 (GW-425) ELEV. 1032.3 DF	2-3/8	5242-1	5242-1
District	Elk - Kanawha County			
Surface	Mose Pushkin, et ux, Charleston, W.Va.			
Mineral	Same & Chas. S. Bannerman, New York			
Commenced	5/24/39			
Completed	9/7/39			
Shot	9/7/39 - Depth 5146-5160			
Volume	2,499,000 c.f.			
Rock Pressure	1190 lbs. 4 days			
Fresh Water	550 1/2 - 10" blr. per hr.			
Salt Water	1284 HF			

Formation Color ^{10'} Top Base Result Formation Color ^{10'} Top Base Result

Sand & Soil	9	10			CEMENT RECORD: 6/25/39 - Cemented 8-5/8" casing. Ran 5 sacks Aquagel ahead of cement. Ran 80 Sacks Alpha Cement mixed with 1 sack Aquagel. 24' solid cement in holed. Dallas Holley, Cementer - Halliburton Oil Well Cementing Company. 8/17/39 - Cemented 6-5/8" casing. Ran 25 Sacks Alpha Cement - 10' Spacer. Plug on top cement. 12' Cement left in casing. Dallas Holley, Cementer - Halliburton Oil Well Cementing Company.
Blue Slate	10	42			
Sand	42	47			
Slate	47	55			
Sand	55	105			
Slate	105	110			
Red Rock	110	160			
Slate	160	200			
Red Rock	200	320			
Sand	320	385			
Red Rock	325	400			
Sand	400	440			
Slate	440	500			
Sand	500	575			
Slate	575	580	Fresh water 550	1/2 - 10" blr. per hr.	
Sand	580	600			
Lime	600	640			
Slate	640	645			
Sand	645	710			
Slate & Shells	710	840			
Sand	840	900			
Slate&Shells	900	930			
Sand	930	980			
Slate	980	1130			
Gas Sand	1130	1206	Sh.G 1180		
Slate	1206	1236	Sh.G 1205		
Salt Sand	1236	1595	Salt W 1274 - 3-10 blrs.		
Slate & Shells	1595	1615	Salt Water 1284 HF		
Lime	1615	1639			
Maxton Sand	1639	1670			
Slate	1670	1677			
Little Lime	1677	1716			
Pencil Cave	1716	1718			
Big Lime	1718	1878			
Keener Sand	1878	1935			
Slate&Shells	1935	3985	Gas 2196 - show		
Brown Shale	3985	4093			
Slate & Shells	4093	4670			
Brown Shale	4670	4710			
White Slate	4710	4750			
Brown Shale	4750	4928			
White Slate	4928	4960			
Brown Shale	4960	5025	SLM		
Corniferous Lime	SLM 5025	5132	SLM		
Criskany Sand	SLM 5132	5216			
Lime	5216	5220	Pay: 5145-5155		
Total Depth		5220			