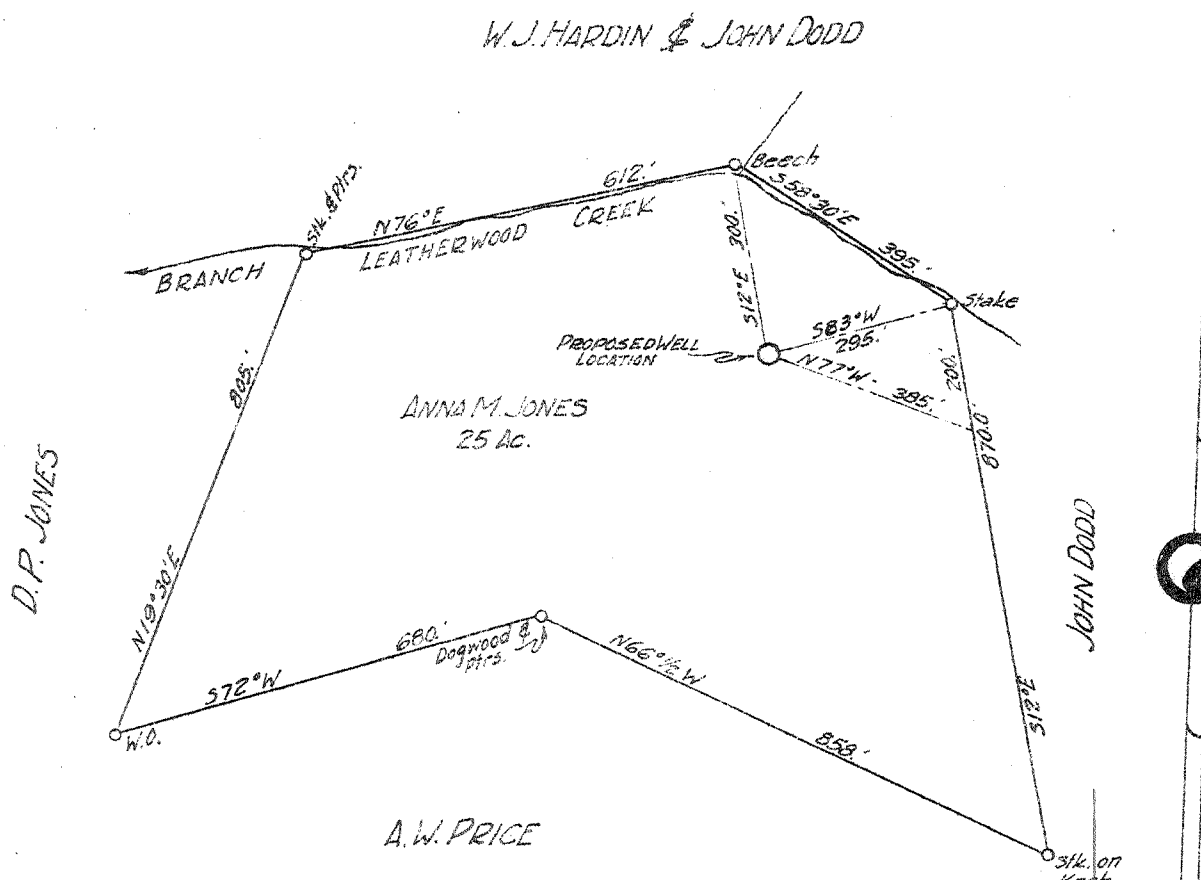


Latitude 38 35
Longitude 81 30



Handwritten: 7/3/51

Handwritten: 0.72 W
2.57 S

New Location X
Drill Deeper
Abandonment

Handwritten: P. 465 7 EC (I-S)

Handwritten: 0.72 W
2.57 S
0.72 W
2.57 S
15'
2.825
0.51d
0.51d

Company Poca Fork Oil & Gas Co.
 Address Clendenin, W. Va
 Farm Anna M. Jones
 Tract _____ Acres 25 Lease No. _____
 Well (Farm) No. One Serial No. _____
 Elevation (Spirit Level) 950
 Quadrangle Kenna-SE
 County Kanawha District Poca
 Engineer A.E. Price
 Engineer's Registration No. 819
 File No. _____ Drawing No. _____
 Date 4-26-40 Scale 1"=300'

STATE OF WEST VIRGINIA
DEPARTMENT OF MINES
OIL AND GAS DIVISION
CHARLESTON

WELL LOCATION MAP
FILE NO. KAN-705

+ Denotes location of well on United States Topographic Maps, scale 1 to 62,500, latitude and longitude lines being represented by border lines as shown.

- Denotes one inch spaces on border line of original tracing.

Handwritten: Deep Well

WEST VIRGINIA DEPARTMENT OF MINES
OIL & GAS DIVISION
W E L L R E C O R D

Permit No. Kan-705
Kenna Quad.

Gas Well

Company Poca Fork Oil & Gas Co.
Address Clendenin, W. Va.
Farm D. P. Jones ACRES 29
Location Poca River
Well No. 2 ELEV. - 950' L.
District Poca - Kanawha County
Surface & Mineral D. P. Jones, RFD, Elkview, W. Va.
Commenced May 22, 1940
Completed Aug. 18, 1940
Open Flow 6/10ths Merc. in 7" OD 22#
Volume 4,275,000
Rock Pressure 1225 lbs. 12 hrs.
Fresh Water 120
Salt Water 1415

CASING & TUBING
10 550½
8-1/4 1721
7 5100
2 5245

5100' of 7" casing
cemented.

Used Shoe

Conductor	16	Shale, borwn	4734	4954
Clay	5 10	Shale, white	4954	5030
Sand	10 60	Shale, black	5030	5087
Red Rock	60 90	→ Corniferous	5087	5211
Blue Slate	90 110	→ Oriskany	5211	5246
Sand	110 130	Lime & Sand - 9	5246	5250
Blue Slate	130 180	Sand - 42	5250	5255
Sand	180 200	Lime, black - 4	5255	5259
Red Rock	200 215	Sand, broken - 4	5259	5275
Lime	215 246			
Red Rock	246 330			
Lime	330 390			
Red Rock	390 425			
Sand	425 440			
Slate & Shells	440 468			
Sand	468 503			
Red Rock	503 510			
Lime, blue	510 542			
Sand	542 750			
Slate	750 860			
Sand	860 920			
Slate	920 953			
Sand	953 1040			
Slate & Shell	1040 1164			
Salt Sand	1164 1532			
Slate & Lime	1532 1537			
Sand	1537 1622			
Slate	1622 1630			
Lime	1630 1672			
Slate	1672 1675			
Maxon Sand	1675 1694			
Lime Shell	1694 1709			
Slate	1709 1711			
Big Lime	1711 1868			
Injun Sand	1868 1900			
Slate	1900 1907			
Lime, hard	1907 2015			
Slate & Shell	2015 2246			
Shale, brown	2246 2279			
→ Borea Shells	2279 2304			
Slate & Shells	2304 3500			
Shale, brown	3500 3558			
Slate & Shells	3558 3820			
Shale, brown	3820 3860			
Slate & Shell	3860 3912			
Shale, brown	3912 4137			
Slate & Lime	4137 4734			

Gas pay in Oriskany 5229 to 5238

From 18 to 27 ft. from top of oriskany.

5087 5211
950 950

4137 4261