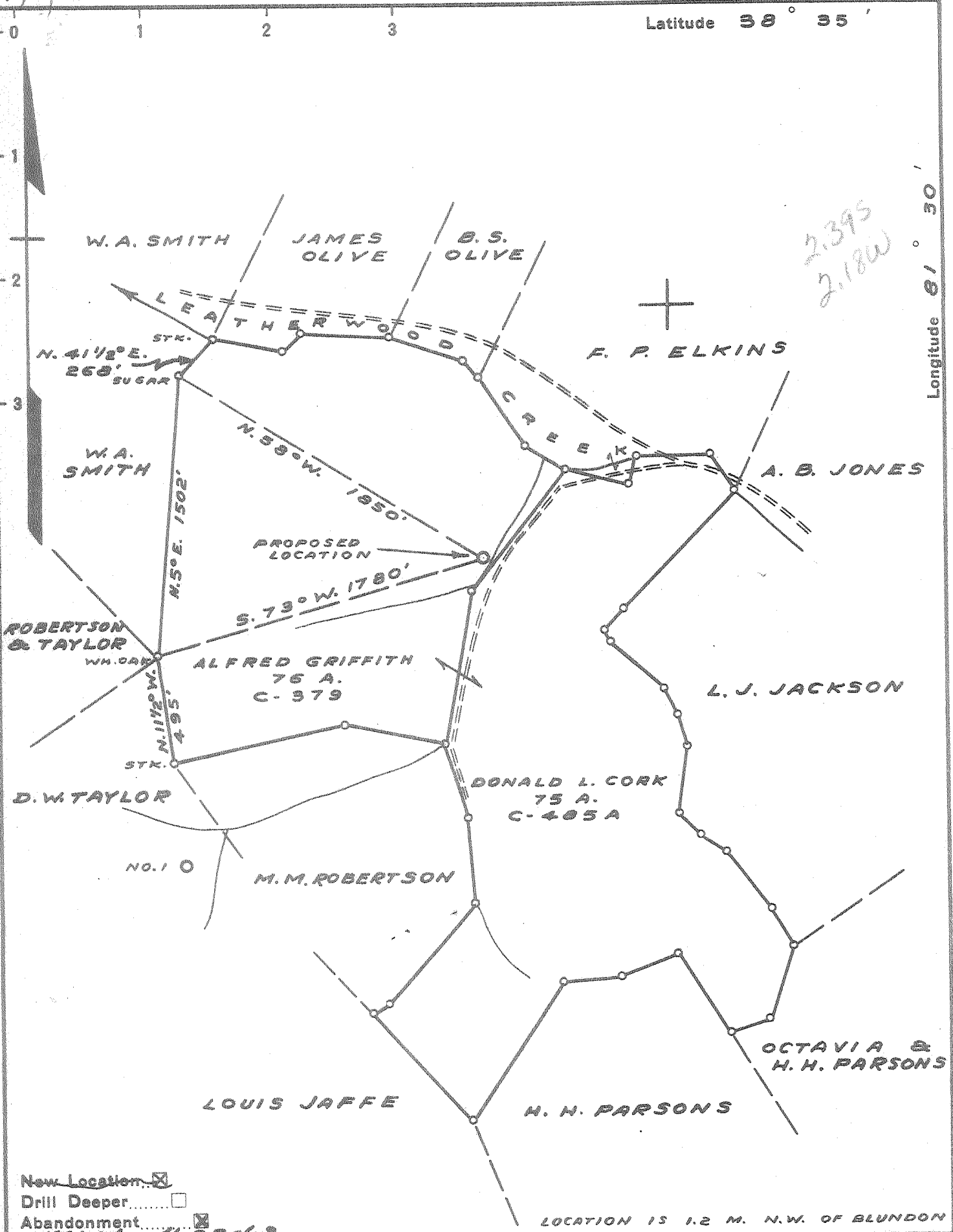


Latitude 38° 35'

Longitude 81° 30'



New Location
 Drill Deeper
 Abandonment
 158888 4-23-68

LOCATION IS 1.2 M. N.W. OF BLUNDON

Gerald D. Jones
 Company COLUMBIAN CARBON CO.
 Address Spencer, W. Va. BOX 1260 CHARLESTON W. VA.
 Farm DONALD L. CORK ET AL
 Tract C-379 & C-485A Acres 151 Lease No. C-485A
 Well (Farm) No. 1 Serial No. _____
 Elevation (Spirit Level) 692.0
 Quadrangle KENNA S.E.
 County KANAWHA District POCA
 Engineer J. M. Dell
 Engineer's Registration No. 772
 File No. _____ Drawing No. _____
 Date MAY 14, 1940 Scale 1" = 660'

STATE OF WEST VIRGINIA
 DEPARTMENT OF MINES
 OIL AND GAS DIVISION
 CHARLESTON

WELL LOCATION MAP
 FILE NO. KAN-710-P

+ Denotes location of well on United States Topographic Maps, scale 1 to 62,500, latitude and longitude lines being represented by border lines as shown.

- Denotes one inch spaces on border line of original tracing.

Poca District, Kanawha County, W. Va.
 By Columbian Carbon Co.
 Elevation, 694.9' L.
 Notes by Heck 9-11-1940, (from South Penn).

		Top.	Bottom.
Corniferous Lime	(SLM)	4755	- 4876
Oriskany Sand	(SLM)	4876	- 4917
Black lime (break)		4917	- 4934
Oriskany Sand		4934	- 4950
Black lime		4950	- 4954

Oriskany gas pay, 4895-4897', show.
 Oriskany gas pay, 4935-4937', 32/10 W. in 6 $\frac{5}{8}$ " 20#, 2,182 M.

Well not shot.

Final open flow, 10/10 W. in 3", 300 M.

Gas frozen off.

42 $\frac{1}{2}$ -hr. rock pressure, 2500#. (?)

Shows fresh water, 60', 2 - 13" bailers per hour.
 fresh water, 140', hole full.
 salt water, 1065', 1 - 10" bailer per hour.
 Salt water, 1080', hole full.
 salt water, 1545-54', hole full.
 Gas, 935', show.
 Gas, 1040', show.
 Gas, 1487', show.
 Oil, 935', show.

Pressure test:

1 min., 10#	30 min., 110#
2 min., 15#	60 min., 190#
3 min., 15#	
4 min., 20#	
5 min., 20#	
10 min., 50#	

WEST VIRGINIA DEPARTMENT OF MINES
OIL & GAS DIVISION
W E L L R E C O R D

Permit No. Kan-710
Kenna S. E. Quad.

Gas Well

		CASING & TUBING
Company	Columbian Carbon Co.	14 33-10 33-10
Address	Box 1240, Charleston, W. Va.	10-3/4 304-8 pulled
Farm	Donald L. Cork ACRES 151	8-5/8 1473-3 1473-3
Location	Leatherwood Creek	7 1686-1 1686-1
Well No.	1 (GW-455) ELEV. 694.90 DF	5-1/2 4791-6 4791-6
District	Poca - Kanawha County	2-3/8 4972-8 4972-8
Surface	Jerry Combs, Elkview, W. Va.	
Mineral	Donald L. Cork, Agt. Cap. City Bk. Bldg., Charleston, W. Va.	No packer

Commenced	June 4, 1940
Completed	Sept. 20, 1940
Shot	Not shot
Volume	300,000 c.f.
Rock Pressure	2500 lbs. 42-1/2 hrs.
Oil	935' - show
Fresh Water	60 - 2-13 blrs. per hr.
	140 - hole full
Salt Water	1065 - 1-10 blrs. per hr.
	1080 - hole full
	1548 - hole full

Clay	0	10	White Slate	4655	4697	
Red Rock	10	25	Brown Shale	4697	4755	SLM
Gravel	25	30	Corniferous Lime	SLM4755	4876	SLM
Sand	30	40	Oriskany Sand	SLM4876	4917	
Red Rock	40	65	W 60	Black Lime Break	4917	4934
Slate & Lime	65	295	W 140 HF	Oriskany Sand	4934	4950
Sand	295	305		Black Lime	4950	4954
Slate	305	315		Total Depth		4954
Sand	315	365				
Slate	365	483				
Sand	483	515		PAY: 4895-97		
Slate	515	560		4935-37		
Sand	560	575				
Slate	575	600				
Sand	600	625				
Slate	625	635				
Sand	635	680				
Slate	680	708				
Sand	708	805				
Slate	805	890				
Sand	890	930	Oil 935 - show			
Slate	930	935	Gas 935 - show			
Salt Sand	935	985				
Slate	985	1015	Gas 1040 - show			
Salt Sand	1015	1370	W 1065			
Slate	1370	1380	W 1080			
Black Lime	1380	1415				
Slate	1415	1418				
Little Lime	1418	1441	SLM			
Big Lime	SLM 1411	1603	Gas 1487 - show			
Big Injun Sand	1603	1637	W 1545-54 HF			
Black Lime	1637	1700				
Slate & Shells	1700	1940				
Shell	1940	1955				
Slate & Shells	1955	2550				
White Slate	2550	3235				
Brown Slate	3235	3295				
White Slate	3295	3625				
Brown Shale	3625	3760				
White Slate	3760	4453				
Brown Slate	4453	4655				

CEMENT RECORD:

6/9/40 Aquagel 10-3/4 casing.
Ran 10 sacks of Aquagel. Ran plug.
John P. Stewart, Cementer - Halliburton Oil Well Cementing Co.

7/5/40 Cemented 8-5/8 casing.
Ran 75 sacks of Alpha cement mixed with 1-1/4% Aquagel solution. Ran 4 sacks Aquagel ahead of cement. 10' spacer. Plug on top aquagel. 16' cement left in pipe.
Dallas Holley, Cementer - Halliburton Oil Well Cementing Co.

9/2/40 Cemented 5-1/2 casing. Ran 8 sacks Alpha cement - dumped on bottom with dump bailer. Cemented by Columbian Carbon co. 42' solid cement in hole.