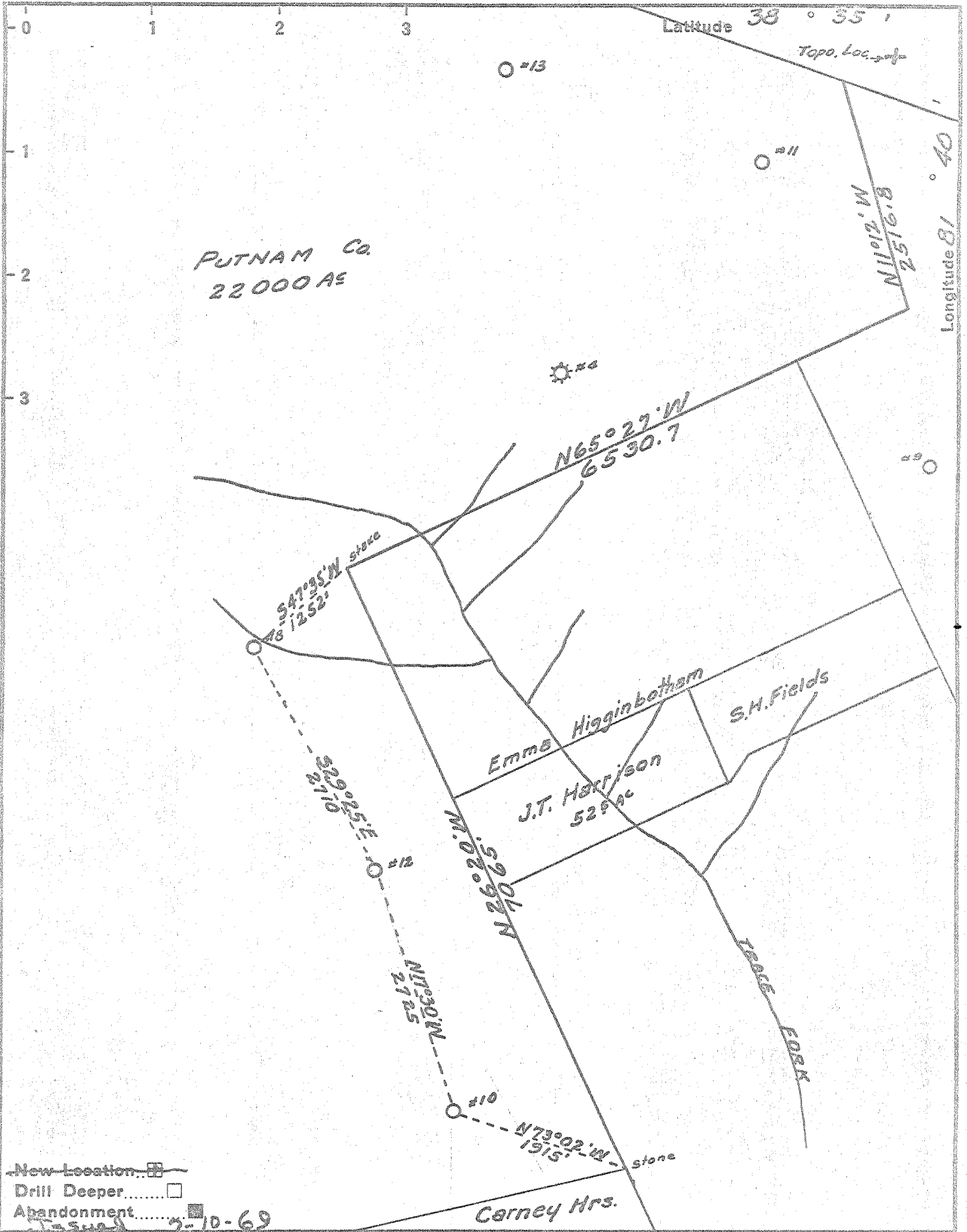


7/10/1969



- New Location
- Drill Deeper
- Abandonment

Issue 5-10-69

Company CABOT CORPORATION
(GODFREY L. CABOT INC.)

Address 600 UNION BLDG. CHARLESTON WVA

Farm THE PUTNAM COMPANY
Part of 22000 Ac

Tract _____ Acres _____ Lease No. 3-464

Well (Farm) No. 12 Serial No. 959

Elevation (Spirit Level) 968.51

Quadrangle KENNA SW

County HANAWHA District POCA

Engineer Ray Boston

Engineer's Registration No. _____

File No. _____ Drawing No. _____

Date JULY 8 1960 Scale 1"=1320'

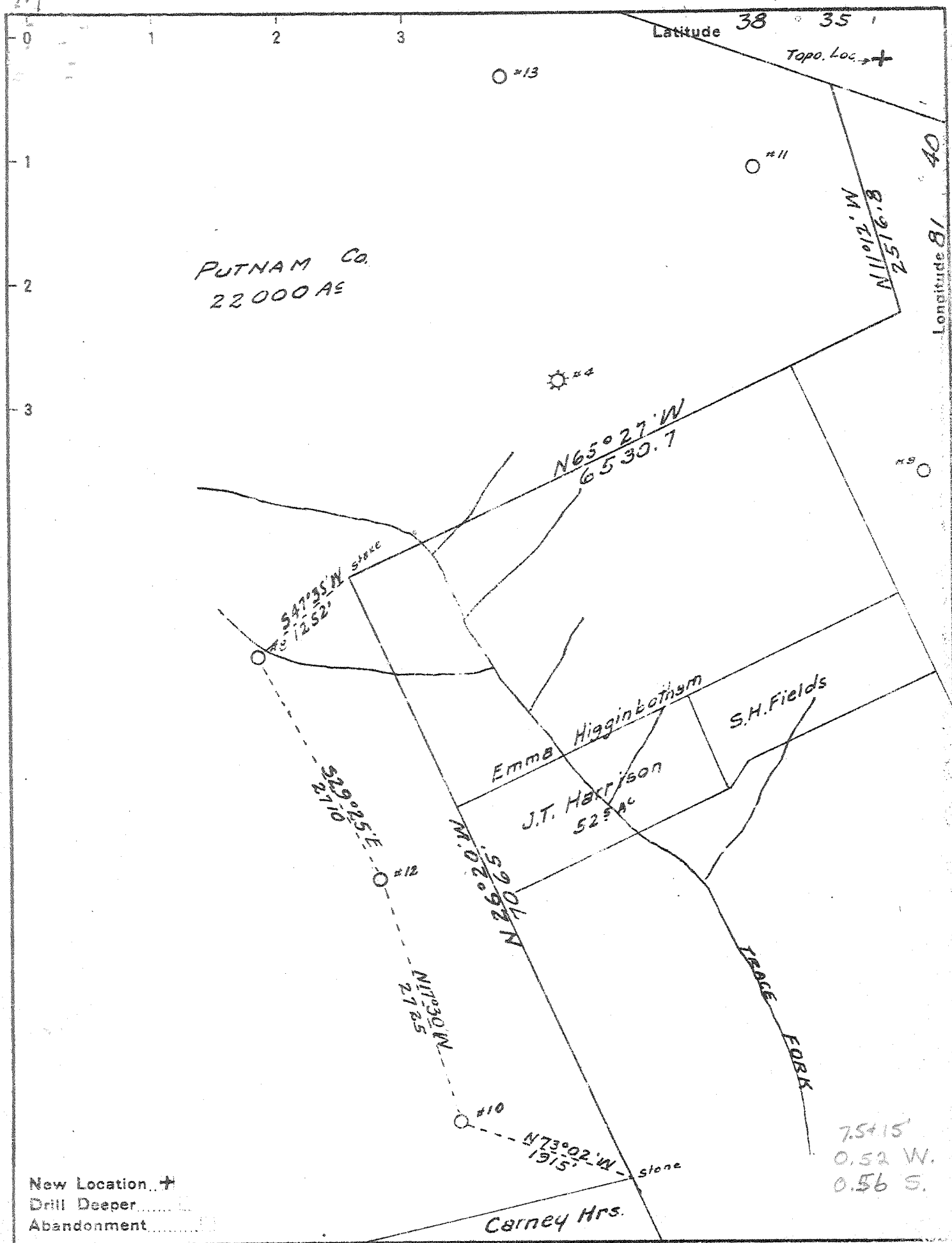
STATE OF WEST VIRGINIA
DEPARTMENT OF MINES
OIL AND GAS DIVISION
CHARLESTON

WELL LOCATION MAP
FILE NO. KAN-726-P

+ Denotes location of well on United States Topographic Maps, scale 1 to 62,500, latitude and longitude lines being represented by border lines as shown.

- Denotes one inch spaces on border line of original tracing.

JUL 18 1969



New Location +
 Drill Deeper ○
 Abandonment □

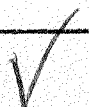
Company GODFREY L. CABOT INC.
 Address 600 UNION BLDG. CHARLESTON WVA
 Farm THE PUTNAM COMPANY
 Part of 22000 AC
 Tract _____ Acres _____ Lease No. 3-464
 Well (Farm) No. 12 Serial No. 959
 Elevation (Spirit Level) 968.51
 Quadrangle KENNA
 County KANAWHA District POCA
 Engineer Ray Boston
 Engineer's Registration No. _____
 File No. _____ Drawing No. _____
 Date JULY 8 1940 Scale 1"=1320'

STATE OF WEST VIRGINIA
 DEPARTMENT OF MINES
 OIL AND GAS DIVISION
 CHARLESTON

WELL LOCATION MAP
 FILE NO. KAN-726

+ Denotes location of well on United States Topographic Maps, scale 1 to 62,500, latitude and longitude lines being represented by border lines as shown.

- Denotes one inch spaces on border line of original tracing.



WEST VIRGINIA DEPARTMENT OF MINES
OIL & GAS DIVISION
WELL RECORD

Permit No. Kan-726
Kenna Quad.

Gas Well

		CASING & TUBING		
Company	Godfrey L. Cabot, Inc.	13	873	873
Address	Charleston, W. Va.	10-3/4	1985	
Farm	The Putnam Company	8-5/8	2223	
Well No.	12 (Serial 959) ELEV. 968.51	7	5120	5120
District	Poca - Kanawha County	2-3/8		5240
Surface & Mineral	-			
Commenced	Aug. 19, 1940			
Completed	Nov. 11, 1940			
Shot	-			
Open Flow	18/10ths Merc. in 6-5/8			
Volume	6,039,000 c.f.			
Rock Pressure	1615 - 60 hrs. - Oriskany			
Water	-			

Soil	0	13	Shale & Shells	4234	4368
Red Rock	13	45	Big White Slate	4368	4742
Lime	45	70	Shale & Shells	4742	5044
Slate	70	80	Shale Black	5044	5100
Red Rock	80	106	Corniferous Lime	5100	5198 SL 5120
Slate	106	116	Oriskany	5198	5248
Red Rock	116	259	Total Depth		5248
Lime	259	270			
Red Rock	270	327			
Sand	327	356			
Red Rock	356	370			
Sand	370	443			
Slate & Shells	443	474			
Red Rock	474	515			
Sand	515	526			
Slate & Shells	526	577			
Red Rock	577	633			
Sand	633	662			
Slate & Shell	662	677			
Red Rock	677	718			
Slate & Shell	718	761			
Slate	761	819			
Lime	819	827			
Slate	827	849			
Sand	849	908			
Slate	908	910			
Coal	910	914			
Slate	914	968			
Sand	968	1014			
Slate	1014	1207			
Sand	1207	1231			
Slate	1231	1468			
Salt Sand	1468	1660	SW 1642 hole filled up within 500' of top		
Slate	1660	1663			
Sand	1663	1725			
Black Lime	1725	1750			
Maxon Sand	1750	1978			
Big Lime	1965	2117	SL 1985		
Engine Sand	2117	2174			
Slate	2174	2216	SL 2223		
Slate & Shell	2223	2558			
Brown Shale	2558	2568			
Berea Grit	2568	2576	Gas 2570		
Slate & Shells	2576	3780			
Brown Shale	3780	3835			
Slate & Shells	3835	4050	Gas 5202		
Brown Shale	4050	4070			
Slate & Shells	4070	4234			

GAUGES IN ORISKANY SAND:

5202-5203	353M
5206	5323M
5206-5208	6039M
5208-5210	6800M
5210-5212	6201M
5214-5216	5868M
5216-5217	6039M
5217-5218	5868M
5221-5223	5692M
5223-5224	5512M
5224-5227	6800M
5227-5228	6039M
5242-5248	6039M

5100	5198
969	969
4131	4229