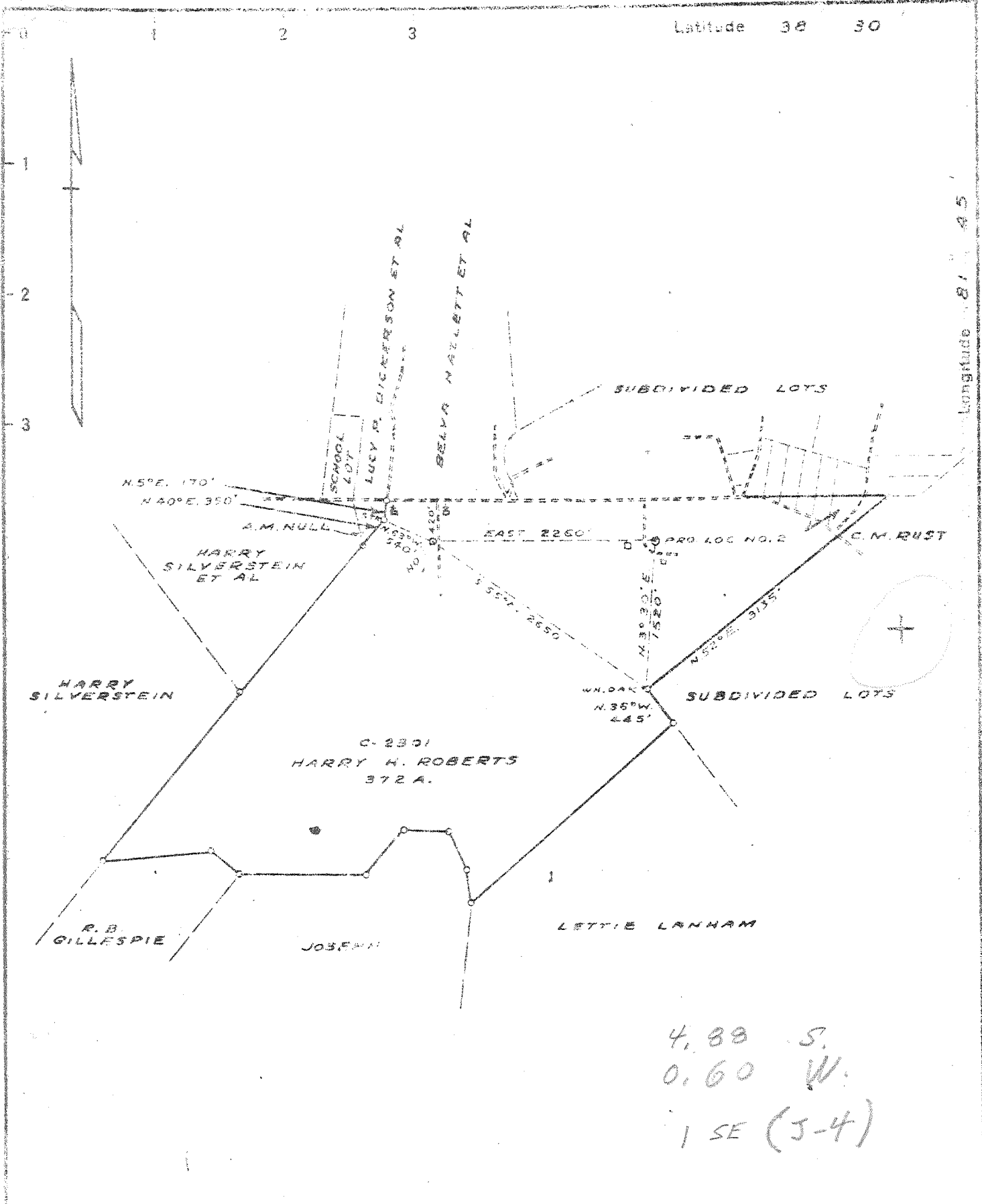


P



4.88 S.  
 0.60 W.  
 1 SE (3-4)

New Location...  X  
 Drill Deeper...   
 Abandonment...

Company	COLUMBIAN CARBON CO.
Address	BOX 273 CHARLESTON W. VA.
Farm	HARRY H. ROBERTS
Tract	Acres 372 Lease No. C-2301
Well (Farm No. 2)	Serial No. 175
Elevation (Spirit Level)	736.2
Quadrangle	ST. ALBANS N.E. 1-107-395
County	KANAWHA District UNION
Engineer	<i>J. M. ...</i>
Engineer's Registration No.	772
File No.	Drawing No. 292
Date	OCT. 4, 1914 Scale 1" = 320'

STATE OF WEST VIRGINIA  
 DEPARTMENT OF MINES  
 OIL AND GAS DIVISION  
 CHARLESTON

WELL LOCATION MAP  
 FILE NO. KAN-1177

+ Denotes location of well on United States Topographic Maps, scale 1 to 62,500, latitude and longitude lines being represented by border lines as shown.

- Denotes one (100) spaces on border line of original tracing

6-6 192  
 Deep Well

WEST VIRGINIA DEPARTMENT OF MINES  
OIL & GAS DIVISION  
W E L L R E C O R D

Permit No. Kan 1177		Dry Hole	
St. Albans N.E. Quad.		CASING & TUBING	
Company	Columbian Carbon Company		
Address	Box 873, Charleston 23, W.Va.	10 $\frac{1}{2}$	40.50 19'6 19'6
Farm	Harry H. Roberts Acres 372	8 $\frac{1}{2}$	24# 465'7 pld.
Location	Rocky Fork		478'11 pld.
Well No.	2 (GW-775) Elev. 735.2 G	7	22# 1835'9 1835'9
District	Union Kanawha County		
Surface	Hiram King, Box 1734, Charleston, W.Va.		
Mineral	Harry H. Roberts et al		
	(for further addresses contact CGC)		
Commenced	10-11-44		No coal
Completed	1-10-45		
Date shot	1-11-45 Depth 4599' 4295' SLM		
	1-18-45 " 3930' 3630'		
	with 21831/3# 80% gelatin each shot		
Volume	dry hole		
Salt Water	1090' H.F.; 1535'; 1595' filled up 500'		
	1715'30' H.F.; 1734' 3 blr. 1 hr.		

Red Rock	0	57	CEMENT RECORD:
Sand	57	65	
Red Rock	65	90	10-23-44 8 5/8" casing. Ran 6 sacks
Slate & Shells	90	138	aquagel and 20# Fibrotex. Circulation
Red Rock	138	216	260' returns 390' Columbian Carbon Crew.
Sand	216	290	
Slate	290	344	10-29-44 7" casing. Ran 1554'1,12
Sand	344	386	sacks aquagel and 50# Fib. Circulation
Slate & Shells	386	480	800' returns 1400'.
Sand	480	618	
Slate	618	623	11-5-44 7" casing. Ran 70'11 additional
Sand	623	696	12 sacks aquagel and 50# Fibrotex.
Slate	696	716	Circulation 950' returns 1490'
Sand	716	742	
Slate & Shells	742	980	11-15-44 7" casing Ran 210'9 additional
Sand	980	1012	13 sacks aquagel and 50# Fibrotex.
Slate & Shells	1012	1080	Returns 1375' - Columbian Carbon Company
Salt Sand	1080	1306	Crew
Slate	1306	1438	
Sand - M	1438	1533	SLM
Big Lime	1533	1710	SLM
Big Injun Sand	1710	1756	
Slate	1756	1820	
Lime	1820	1834	
Slate & Shells	1834	2177	
Brown Shale	2177	2187	
Borea Sand	2187	2201	
Slate & Shells	2201	2455	
Lime	2455	2510	
Slate & Shells	2510	3430	
Brown Shale	3430	3455	
Slate & Shells	3455	3680	Gas 1619-21 36,500 C.F.
Shale	3680	3694	Gas 1715' 103 MCF
Slate & Shells	3694	3750	
Brown Shale	3750	3928	Gas 3758-70 show
Slate & Shells	3928	4362	
Shale	4362	4601	
Corniferous Lime	4601	4693	
Oriskany Sand	4693	4712	
Lime	4712	4718	
Sand	4718	4725	
Lime	4725	4760	
TOTAL DEPTH		4760	

4601 4693 4725  
 735 735 735  


---

 3866 3958 3990