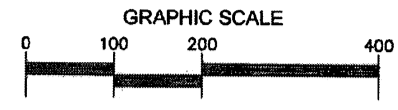
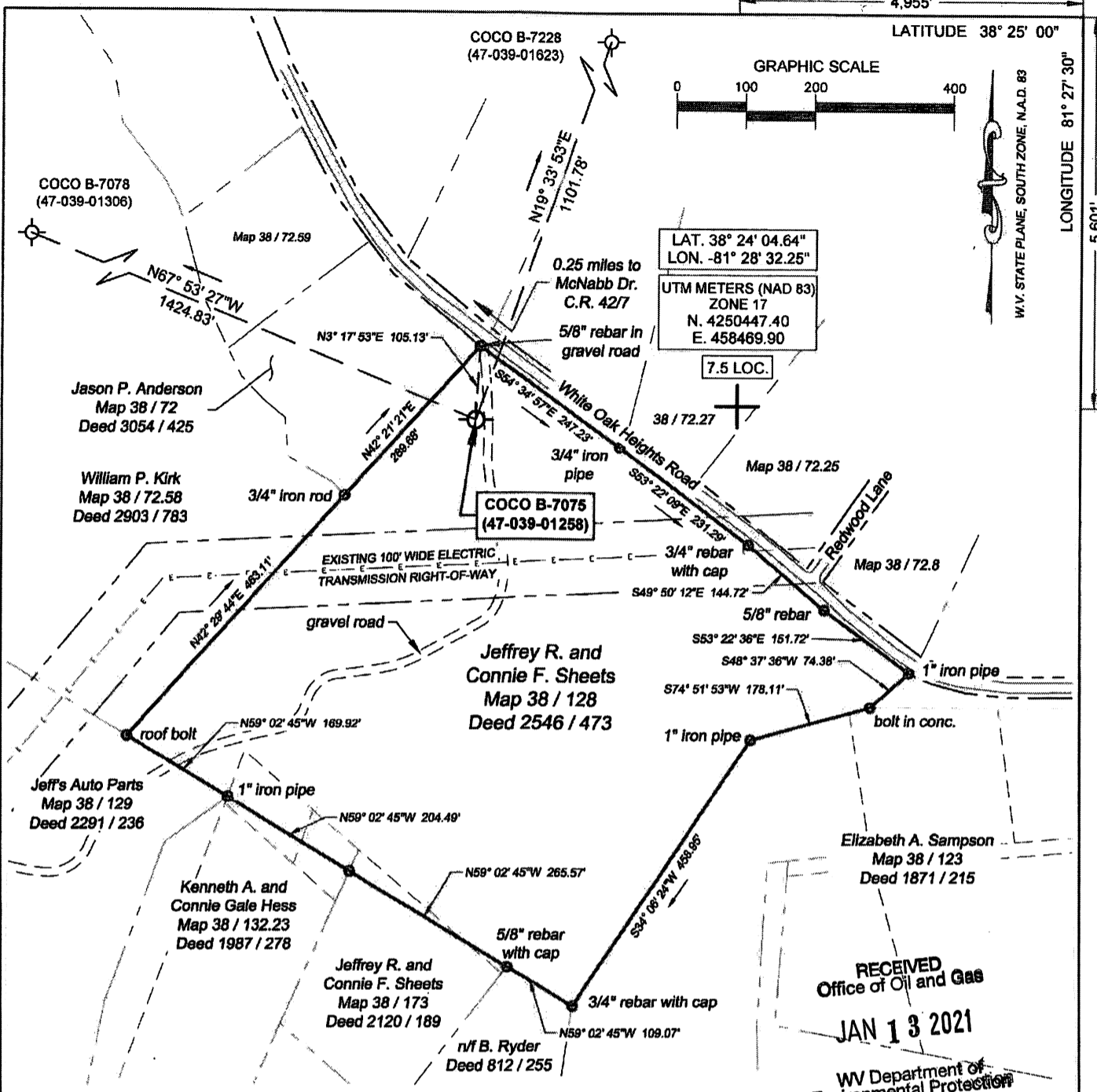


4703901258



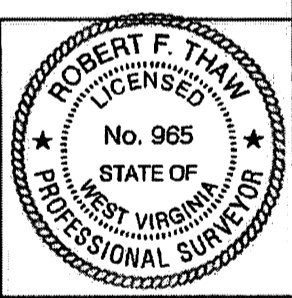
LAT. 38° 24' 04.64"  
 LON. -81° 28' 32.25"  
 UTM METERS (NAD 83)  
 ZONE 17  
 N. 4250447.40  
 E. 458469.90  
 7.5 LOC.

RECEIVED  
 Office of Oil and Gas  
 JAN 13 2021  
 WV Department of Environmental Protection

(+) DENOTES LOCATION OF WELL ON UNITED STATES TOPOGRAPHIC MAPS

FILE No. 2001-3079-001-007  
 DRAWING No. 2001-3079-001-007  
 SCALE 1"=200'  
 MINIMUM DEGREE OF ACCURACY 1:200  
 PROVEN SOURCE OF ELEVATION TRIMBLE R10  
GPS UNIT

I THE UNDERSIGNED, HEREBY CERTIFY THAT THIS PLAT IS CORRECT TO THE BEST OF MY KNOWLEDGE AND BELIEF AND SHOWS ALL THE INFORMATION REQUIRED BY LAW AND THE REGULATIONS ISSUED AND PRESCRIBED BY THE DIVISION OF ENVIRONMENTAL PROTECTION.  
 (SIGNED) R. F. Thaw  
**ROBERT F. THAW PS #965**



FORM IV-6 (8-78)

STATE OF WEST VIRGINIA  
 DIVISION OF ENVIRONMENTAL PROTECTION  
 OFFICE OF OIL AND GAS  
 NITRO, WV

DATE OCTOBER 22 2020  
 OPERATOR'S WELL No. 7075  
 API WELL No. 47 039 - 01258P

WELL TYPE: OIL  GAS  LIQUID INJECTION  WASTE DISPOSAL  STATE COUNTY PERMIT  
 (IF "GAS") PRODUCTION  STORAGE  DEEP  SHALLOW

LOCATION: ELEVATION 895.0' WATER SHED FLATWOOD RUN OF INDIAN CREEK  
 DISTRICT ELK COUNTY KANAWHA  
 QUADRANGLE BLUE CREEK, WV

SURFACE OWNER JEFFRIE R. SHEETS AND CONNIE F. SHEETS ACREAGE 8.42  
 OIL & GAS ROYALTY OWNER 1) GEORGE C. ACREE, JR, ET AL, 2) GRACE J. MATHENY, 3) URSULA C. MUDD  
 LEASE ACREAGE 1) 70.5 AC., 2) 60 AC., 3) 60 AC. LEASE NO. 1)1050069-000, 2)1048322-001, 3)1048322-002

PROPOSED WORK: DRILL  CONVERT  DRILL DEEPER  REDRILL  FRACTURE   
 STIMULATE  PLUG OFF OLD FORMATION  PERFORATE NEW FORMATION   
 OTHER PHYSICAL CHANGE IN WELL (SPECIFY) 03/26/2021  
 PLUG AND ABANDON  CLEAN OUT AND REPLUG

TARGET FORMATION ORISKANY ESTIMATED DEPTH 5277  
 WELL OPERATOR COLUMBIA GAS TRANSMISSION, LLC DESIGNATED AGENT JAMES AMOS  
 ADDRESS PO BOX 1273, CHARLESTON, WV 25325-1273 ADDRESS 48 COLUMBIA GAS ROAD SANDYVILLE, WV 25275

(ROMANCE)



4703901258

BLUE CREEK QUADRANGLE  
WEST VIRGINIA  
TOPOGRAPHIC SERIES

(CLIO)

RECEIVED AND GAIN  
Office of Oil and Gas  
JAN 18 2021  
WV Department of  
Environmental Protection



(BIG CHIMNEY)

(CLEDENIN)

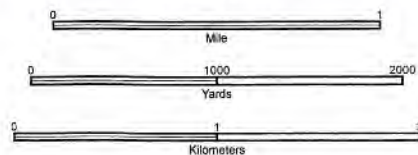
(CHARLESTON EAST)

(MAMMOTH)

Declination



(QUICK)  
SCALE 1:24000



Produced by Trimble Terrain Navigator Pro  
Topography based on USGS 1:24,000 Maps

North American 1983 Datum (NAD83)

To place on the predicted North American 1927 move the  
projection lines 11M N and 14M E

CONTOUR INTERVAL 20 FT

38081-D3-TM-024  
BLUE CREEK, WV  
JAN 1, 1977

03/26/2021