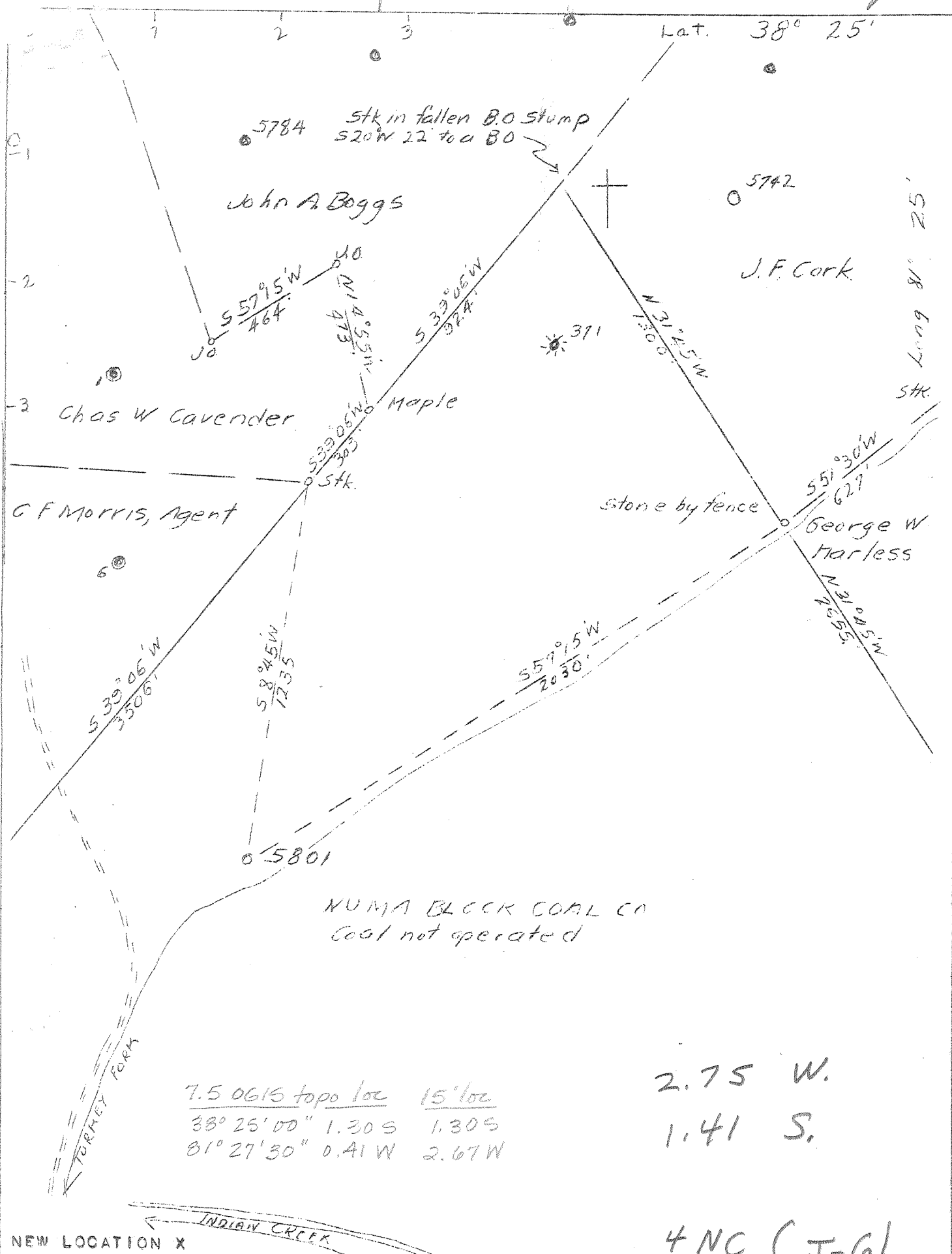


P



7.5 0615 topo loc 15' loc
 38° 25' 00" 1.30 S 1.30 S
 81° 27' 30" 0.41 W 2.67 W

2.75 W.
 1.41 S.

4 NC (J-6)

NEW LOCATION X

COMPANY	UNITED FUEL GAS CO.
ADDRESS	CHARLESTON, W. VA.
FARM	NUMA BLOCK COAL CO.
TRACT	ACRES 1025 LEASE NO. 930
WELL (FARM) NO.	9 SERIAL NO. 5801
ELEVATION (SL)	724.57 GR.
QUADRANGLE	CLENDENIN - WC
COUNTY	KANAWHA DISTRICT ELK
ENGINEER	G. H. MOORE
ENGINEER'S REG. NO.	662
FILE NO.	70-61 DRAWING NO.
DATE	JULY 29, 1946 SCALE 1"=400'

STATE OF WEST VIRGINIA
 DEPARTMENT OF MINES
 OIL AND GAS DIVISION
 CHARLESTON

WELL LOCATION MAP
 FILE NO. KAN 1304

+ DENOTES LOCATION OF WELL ON U.S. TOPOGRAPHIC MAPS, SCALE 1 TO 62,500 LATITUDE AND LONGITUDE LINES BEING REPRESENTED BY BORDER LINES AS SHOWN.

- DENOTES ONE INCH SPACES ON BORDER LINE OF ORIGINAL TRACING.

Deep Well

WEST VIRGINIA DEPARTMENT OF MINES
OIL & GAS DIVISION
W E L L R E C O R D

Permit No. Kan 1304
Clendenin Quad.

Gas Well
CASING & TUBING

Company	United Fuel Gas Co.			
Address	P.O. Box 1273, Charleston 25, W.Va.			
Farm	Numa Block Coal Co. A 1025	16	17	Same
Location	Turkey Fk. of Indian Cr.	14	117	"
Well No.	5801 Elev. 724.57 Gr.	10 $\frac{1}{2}$	1411	"
District	Elk Kanawha County	8 5/8	1842	"
Surface		7	4117	"
Mineral	Marcia E. Widmer et al	5 $\frac{1}{2}$	4886	"
	401 Ward Parkway, Kansas City, Mo.			
Commenced	10-9-46			Coal at 65' 24"
Completed	6-21-47			
Not shot				
Rock Pressure	152 lbs. 48 hrs.			
Fresh Water	40' H.F.			

Gravel	0	16
Sand	16	56
Slate	56	65
Coal	65	67 ✓
Sand	67	95
Slate	95	108
Sand	108	120
Slate & Shells	120	307
Sand	307	318
Slate & Shells	318	385
Sand	385	410
Slate	410	445
Sand	445	454
Slate	454	489
Sand	489	515
Slate & Shells	515	590
Sand	590	595
Slate & Shells	595	611
Salt Sand	661	850
Slate	850	870
Salt Sand	870	1185
Slate & Shells	1185	1275
Red Rock	1275	1276
Blue Slate	1276	1282
Red Rock	1282	1287
Slate & Shells	1287	2317
Maxon Sand	1317	1340
Slate & Shells	1340	1356
Little Lime	1356	1384
Pencil Cave	1384	1388
Big Lime	1388	1549
Keener Sand	1549	1571
Injun Sand	1571	1584
Slate & Shells	1584	1635
Weir Sand	1635	1820
Slate & Shells	1820	3545
Brown Shale	3545	3930
White Slate	3930	4380
Brown Shale	4380	4760
White Slate	4760	4787
Black Shale	4787	4870
Corniferous Lime	4870	4993
Oriskany Sand	4993	5037
Lime	5037	5046
Sandy Lime	5046	5053
Sand	5053	5066
Lime	5066	5067
Total Depth		5067

Sand 1140-1165 settling sand

Gas 1464 Big Lime
Gas 1550 Keener

Gas 1645 Weir
Gas 1550 Keener

4870	4993	5066
925	725	725
<hr/>	<hr/>	<hr/>
4145	4268	4341

Gas 5025 Oriskany

Well plugged back to 1926'