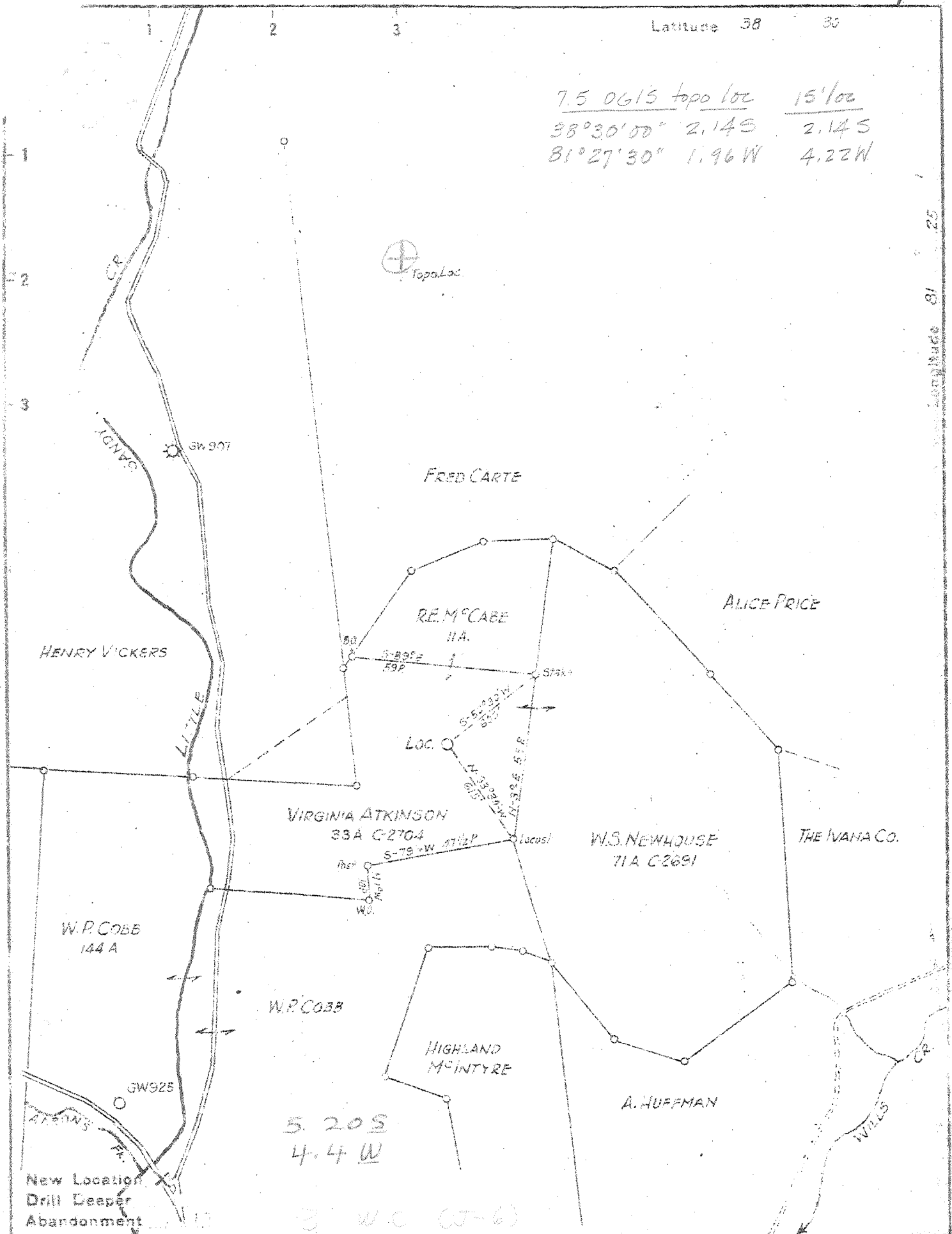


Latitude 38 30

7.5 0615 topo loc 15' loc
 38°30'00" 2.14S 2.14S
 81°27'30" 1.96W 4.22W



Longitude 81 25

Company COLUMBIAN CARBON CO.
 Address Box 873 CHARLESTON W.VA.
 Farm W.S. NEWHOUSE ET AL.
 Tract _____ Acres 115 Lease No WV 110
 Well (Farm) No. 1 Serial No. GW-937
 Elevat. on (Spirit Level) 937.5
 Quadrangle GLENDELYN NW.3 E-215 W-435
 County KANAWHA District ELK
 Engineer C.A. Cranham
 Engineer's Registration No. 633
 File No. _____ Drawing No. _____
 Date 12/17/46 Scale 1" = 660'

STATE OF WEST VIRGINIA
 DEPARTMENT OF MINES
 OIL AND GAS DIVISION
 CHARLESTON

WELL LOCATION MAP
 FILE NO. KAN-1342

+ Denotes location of well on United States Topographic Maps, scale 1 to 62 500, latitude and longitude lines being represented by border lines as shown.
 - Denotes one inch spaces on border line of original tracing.

Deep Well

WEST VIRGINIA DEPARTMENT OF MINES
OIL & GAS DIVISION
W E L L R E C O R D

Dry Hole

Gas Well
CASING & TUBING

Permit No. Kan. 1342
Clendenin Quad.
Company Columbian Carbon Company
Address Box 873, Charleston 23, W.Va.
Farm W.S. Newhouse Acres 115
Location Little Sandy
Well No. 1 (GW -937 Elev. 937.9 G
District Elk Kanawha County
Surface B.B. Simton et vir, Frame, W.Va.
Mineral
Commenced 3-8-47
Completed 6-25-47
Date shot 6-27-47 Depth 5300 to 5340
with 400# 80% gelatin
33 to 47 MCF
Volume 1230'2-10" blrs. per hr.
Fresh Water 1340' H.F.
Salt Water 1900' show; 5308 show

13 3/8	52	same
10 3/4	421'4	0
8 5/8	1764'1	0
6 5/8	5229	1706'3

Surface	0	30
Sand	30	40
Blue Slate	40	60
Red Rock	60	100
Blue Shale	100	140
Sand	140	170
Blue Shale	170	195
Red Rock	195	280
Blue Slate	280	416
Sand	416	455
Slate	455	465
Sand	465	475
Slate Shells	475	515
Sand	515	540
Slate & Shells	540	560
Sand	560	624
Slate & Shells	624	690
Sand	690	720
Slate & Shells	720	745
Sand	745	845
Slate & Shells	845	1025
Sand	1025	1043
Slate & Shells	1043	1055
Sand	1055	1070
Slate & Shells	1070	1180
Salt Sand	1180	1685
Time	1685	1714
Slate & Shells	1714	1739
Big Lime	1739	1739 SLM
Big Injun Sand	1739	1876
Slate & Shells	1876	1904
Brown Shale	1904	3975
White Slate	3975	4195
Brown Slate	4195	4865
Slate, white	4865	5050
Black Shale	5050	5090
Gorniferous Lime	5090	5169
Oriskany Sand	5169	5293
Black Lime	5293	5337
Oriskany Sand	5337	5345
Black Lime	5345	5363
Total Depth	5363	5380
Plugged and abandoned July 9, 1947		5380

CEMENT RECORD:

3-17-47 10 3/4" casing. Ran 7 sacks aquagel. Good circulation.

4-22-47 8 5/8" casing. Ran 21 sacks aquagel and 1 bale fibertex. Ran plug. Circulation and returns.

6-6-47 6 5/8" casing. Ran 50 sacks aquagel mixed with 500# Fibertex. No circulation or returns.

SLM

Gas 3670 Show
Gas 4050 show

SLM

5169	5293	5363
938	938	938
4231	4355	4425