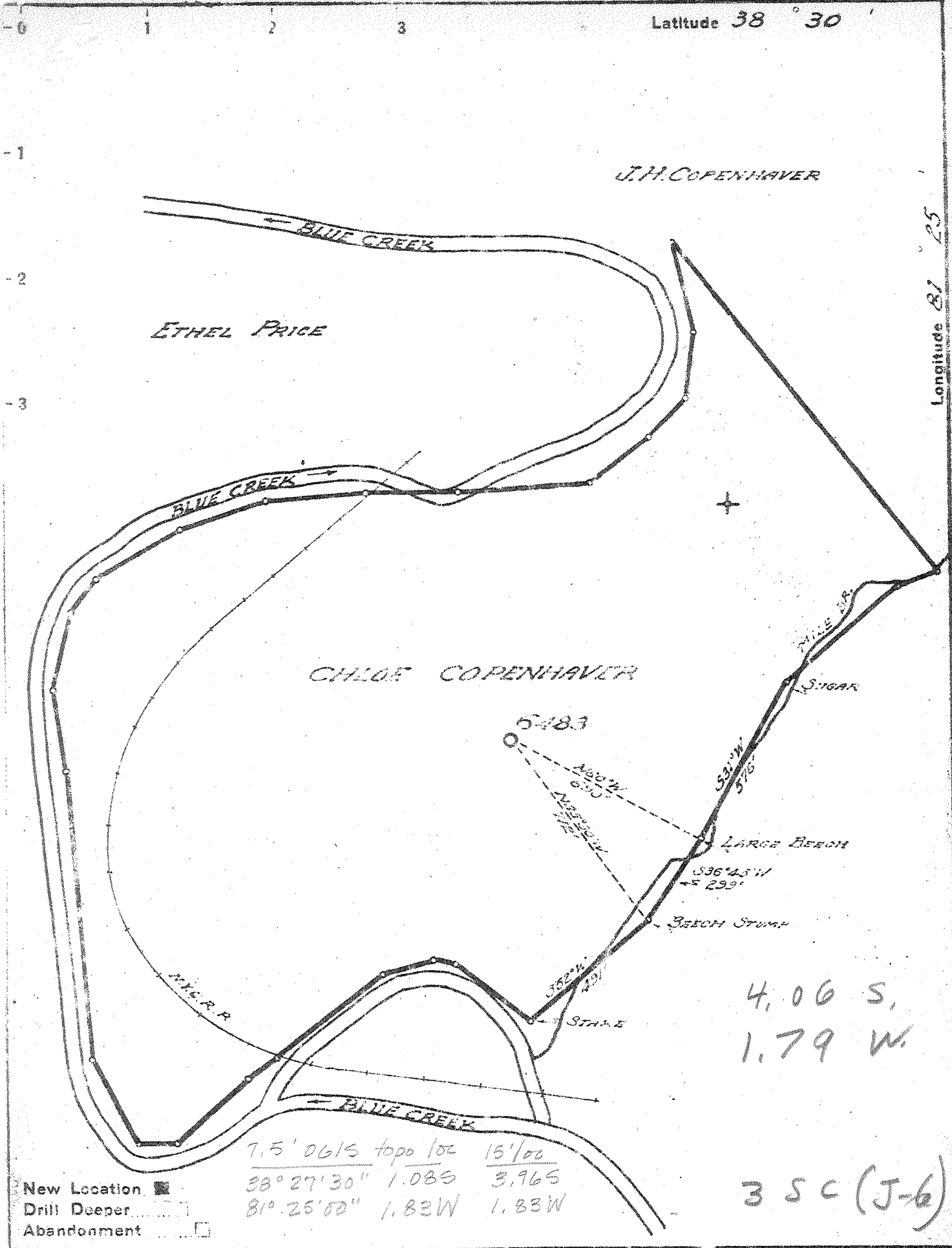


P



New Location   
 Drill Deeper   
 Abandonment

7.5' 0615 topo loc 15' 00  
 38° 27' 30" 1.085 3.965  
 81° 25' 50" 1.83W 1.83W

4.06 S,  
 1.79 W

35C (J-6)

Company UNITED FUEL GAS CO.  
 Address CHARLESTON, W.VA.  
 Farm CHLOE J. COPENHAVER  
 Tract \_\_\_\_\_ Acres 97 Lease No. 7425  
 Well (Farm) No 19 Serial No. 6483  
 Elevation (Spirit Level) 737.05  
 Quadrangle CLENDENIN - NW  
 County KANAWHA District ELK  
 Engineer \_\_\_\_\_  
 Engineer's Registration No. 662  
 File No. 70-65 Drawing No. \_\_\_\_\_  
 Date 1-3-43 Scale 1" = 400'

STATE OF WEST VIRGINIA  
 DEPARTMENT OF MINES  
 OIL AND GAS DIVISION  
 CHARLESTON

WELL LOCATION MAP  
 FILE NO. KAN-1496

+ Denotes location of well on United States Topographic Maps, scale 1 to 62,500, latitude and longitude lines being represented by border lines as shown.  
 - Denotes one inch spaces on border line of original tracing.

IMPERIAL TRADING CO. INC. K.S.E. CO., N.Y.  
 Samples 15A (5126-5156)

Deep Well

WEST VIRGINIA DEPARTMENT OF MINES  
OIL & GAS DIVISION  
W E L L R E C O R D

Permit No. Kan 1496  
Clendenin Quad.

Gas Well  
CASING & TUBING

Company	United Fuel Gas Company			
Address	P.O. Box 1273, Charleston 25, W.Va.	10 3/4	384	384
Farm	Chloe J. Copenhaver, A 97	8 5/8	1530	1530
Location	Mile Fk. of Blue Cr.	7	5052	5052
Well No.	6483 Elev. 740.78			
District	Elk Kanawha County			
Surface				
Mineral	Chloe Copenhaver, Blue Creek, W.Va.			
Commenced	12-15-48			
Completed	3-25-49			
Not shot				
Volume	25,000 M Oriskany			
Rock Pressure	1650 lbs. 48 hrs.			
Fresh Water	75°; 230° H.F.			
Salt Water	925° H.F.			

Soil	0	12	Gas and Oil 775' show
Sand	12	40	Gas 832-836'
Blue Mud	40	80	Gas 1700-1710' show
Lime	80	95	Gas 1755-1760' show
Sand	95	180	Gas 1835-1850' show
Slate	180	190	Gas 4500-4700' show
Sand	190	230	Oriskany Gas 5156-5175 25,000 M
Slate	230	242	Well not shot
Lime	242	290	Open flow 25,000 M Oriskany
Slate	290	315	48 hr. R.P. 1650#
Lime	315	325	Temperature 119 degrees
Blue Mud	325	355	Shut in 4-4-49 in 2" tubing
Gray Lime	355	475	
Slate	475	510	
Slate & Shells	510	690	
Sand	690	720	
Lime Shells	720	765	
Black Slate	765	775	
Black Lime	775	790	
Slate	790	800	
Lime	800	815	
Slate	815	832	
Salt Sand	832	1312	
Slate	1312	1314	
Broken Sand	1314	1321	
Red Rock	1321	1330	
Gray Lime	1330	1400	
Black Lime	1400	1415	
Maxon Sand	1415	1435	
Slate & Shells	1435	1457	
Black Lime - L. Lime	1457	1480	
Big Lime	1480	1650	
Broken Sand	1650	1680	
Slate - Maxon Sand	1680	1690	
Injun Sand	1690	1725	
Sl. & Shls.	1725	1755	
Weir Sand	1755	1785	
Slate & Shells	1785	1900	
Broken Sand	1900	2000	
Lime Shells	2000	2100	
Slate & Shells	2100	2190	
Berea Shells	2190	2200	
Slate & Shells	2200	2450	
White Slate	2450	2700	
Broken Sand	2700	2710	
Slate & Shells	2710	3790	
Dark Slate	3790	4040	
White Slate	4040	4540	
Brown Shale	4540	4880	
White Slate	4880	4925	
Brown Shale	4925	4980	
Black Shale	4980	5028	
Corniferous Lime	5028	5145	
Oriskany	5145	5175 T.D.	

5028	5145
741	741
4287	4404