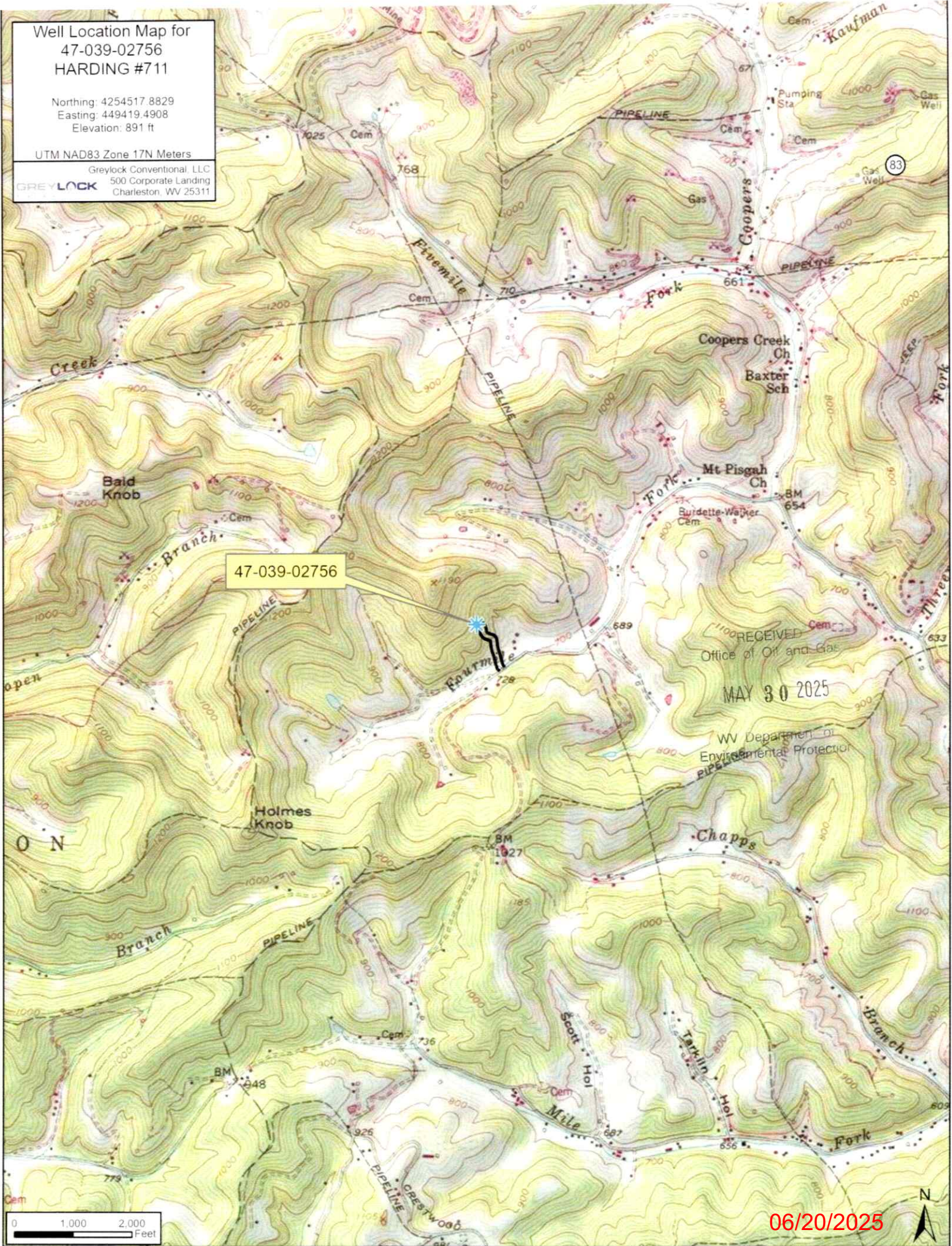


Well Location Map for  
47-039-02756  
HARDING #711

Northing: 4254517.8829  
Easting: 449419.4908  
Elevation: 891 ft

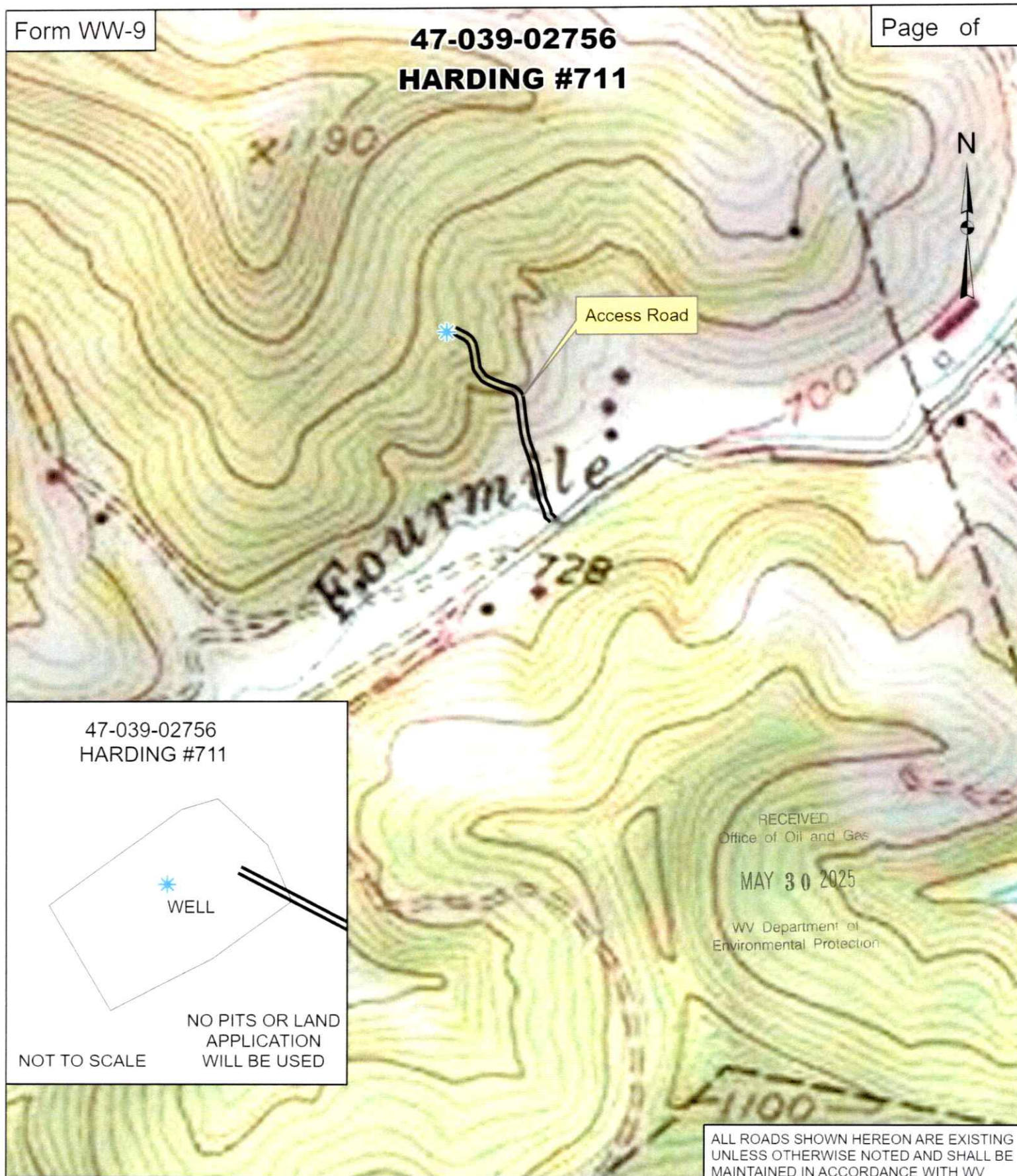
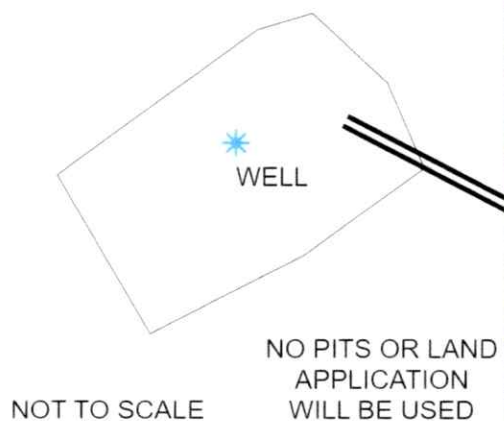
UTM NAD83 Zone 17N Meters

GREYLOCK  
Greylock Conventional, LLC  
500 Corporate Landing  
Charleston, WV 25311



06/20/2025



**47-039-02756**  
**HARDING #711**47-039-02756  
HARDING #711**GREYLOCK**  
ENERGY

Greylock Conventional, LLC

500 Corporate Landing Charleston, WV 25311  
304-925-6100 - [www.greylockenergy.com](http://www.greylockenergy.com)

Date: 4/28/2025

0 150 300 600 900 1,200



Feet

1:6,000

TOPO SECTION OF USGS  
BIG CHIMNEY 7.5' QUADRANGLE

ALL ROADS SHOWN HEREON ARE EXISTING  
UNLESS OTHERWISE NOTED AND SHALL BE  
MAINTAINED IN ACCORDANCE WITH WV  
D.E.P. OIL AND GAS BMP MANUAL  
ENTRANCES AT COUNTY/STATE ROADS  
SHALL BE MAINTAINED WITH WV D.O.T.  
REGULATION. SEPARATE PERMITS MAY  
BE REQUIRED BY D.O.T.

EARTHWORK CONTRACTORS ARE  
RESPONSIBLE FOR NOTIFICATION TO THE  
OPERATOR AND IN ACCORDANCE WITH  
06/20/2025 TO ANY  
DEVIATION FROM THIS PLAN.





West Virginia Department of Environmental Protection  
Office of Oil and Gas

**WELL LOCATION FORM: GPS**

API: 47-039-02756 WELL NO.: 711  
FARM NAME: HARDING  
RESPONSIBLE PARTY NAME: Greylock Conventional, LLC  
COUNTY: Kanawha DISTRICT: Elk  
QUADRANGLE: Big Chimney  
SURFACE OWNER: Greylock Conventional, LLC.  
ROYALTY OWNER: \_\_\_\_\_  
UTM GPS NORTHING: 4254517.8829  
UTM GPS EASTING: 449419.4908 GPS ELEVATION: 891 ft

The Responsible Party named above has chosen to submit GPS coordinates in lieu of preparing a new well location plat for a plugging permit or assigned API number on the above well. The Office of Oil and Gas will not accept GPS coordinates that do not meet the following requirements:

1. Datum: NAD 1983, Zone: 17 North, Coordinate Units: meters, Altitude: height above mean sea level (MSL) – meters.
2. Accuracy to Datum – 3.05 meters
3. Data Collection Method:

Survey grade GPS \_\_\_\_: Post Processed Differential \_\_\_\_

Real-Time Differential \_\_\_\_

Mapping Grade GPS X: Post Processed Differential \_\_\_\_

Real-Time Differential X

4. **Letter size copy of the topography map showing the well location.**

I the undersigned, hereby certify this data is correct to the best of my knowledge and belief and shows all the information required by law and the regulations issued and prescribed by the Office of Oil and Gas.

GIM/24  
Signature

Asset Development Manager  
Title

6/1/25  
Date

RECEIVED  
Office of Oil and Gas

MAY 30 2025

WV Department of  
Environmental Protection

06/20/2025