

Well Location Map for
47-039-03203
EASTERN #08

Northing: 4223002 3593
Easting: 465044 0203
Elevation: 963ft

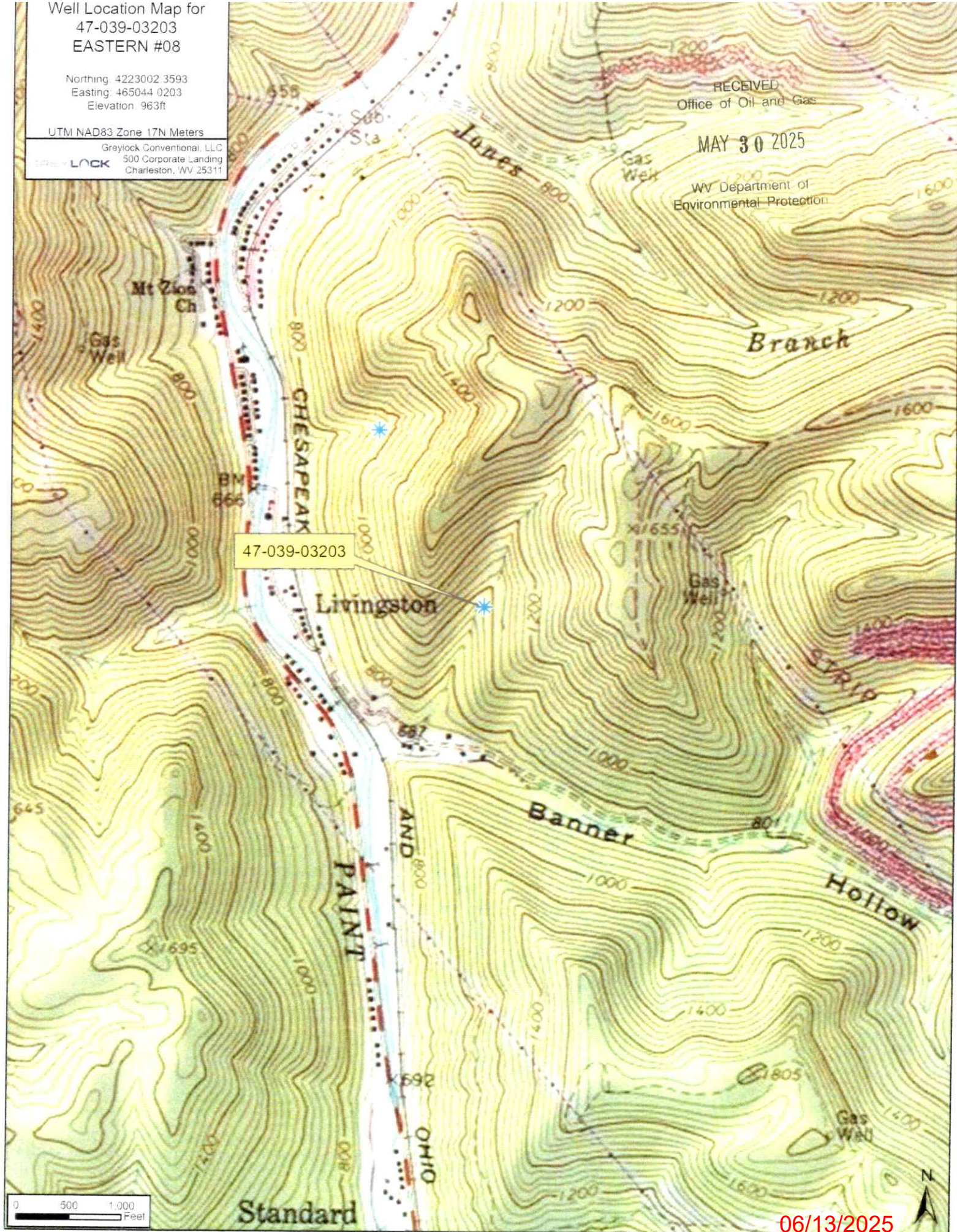
UTM NAD83 Zone 17N Meters

Graylock Conventional, LLC
500 Corporate Landing
Charleston, WV 25311

RECEIVED
Office of Oil and Gas

MAY 30 2025

WV Department of
Environmental Protection



06/13/2025

**47-039-03203
EASTERN #08**

RECEIVED
Office of Oil and Gas
MAY 30 2025
WV Department of
Environmental Protection

**HESAPEAKE****Livingston**

Access Road

**47-039-03203
EASTERN #08**

NO PITS OR LAND
APPLICATION
WILL BE USED
NOT TO SCALE

GREYLOCK
ENERGY

Greylock Conventional, LLC

500 Corporate Landing Charleston, WV 25311
304-925-6100 - www.greylockenergy.com

Date: 4/28/2025

0 150 300 600 900 1,200



Feet

1:6,000

TOPO SECTION OF USGS
CEDAR GROVE 7.5' QUADRANGLE

ALL ROADS SHOWN HEREON ARE EXISTING
UNLESS OTHERWISE NOTED AND SHALL BE
MAINTAINED IN ACCORDANCE WITH WV
D.E.P. OIL AND GAS BMP MANUAL
ENTRANCES AT COUNTY/STATE ROADS
SHALL BE MAINTAINED WITH WV D.O.T.
REGULATION. SEPARATE PERMITS MAY
BE REQUIRED BY D.O.T.

EARTHWORK CONTRACTORS ARE
RESPONSIBLE FOR NOTIFICATION TO THE
OPERATOR AND INSPECTOR PRIOR TO ANY
DEVIATION FROM THE PLAN

06/13/2025

WW-7
8-30-06

RECEIVED
Office of Oil and Gas

MAY 30 2025

WV Department of
Environmental Protection



West Virginia Department of Environmental Protection
Office of Oil and Gas

WELL LOCATION FORM: GPS

API: 47-039-03203 WELL NO.: 08

FARM NAME: EASTERN

RESPONSIBLE PARTY NAME: Greylock Conventional, LLC

COUNTY: Kanawha DISTRICT: Cabin Creek

QUADRANGLE: Cedar Grove

SURFACE OWNER: _____

ROYALTY OWNER: _____

UTM GPS NORTHING: 4223002.3593

UTM GPS EASTING: 465044.0203 GPS ELEVATION: 963 ft

The Responsible Party named above has chosen to submit GPS coordinates in lieu of preparing a new well location plat for a plugging permit or assigned API number on the above well. The Office of Oil and Gas will not accept GPS coordinates that do not meet the following requirements:

1. Datum: NAD 1983, Zone: 17 North, Coordinate Units: meters, Altitude: height above mean sea level (MSL) – meters.

2. Accuracy to Datum – 3.05 meters

3. Data Collection Method:

Survey grade GPS ____ : Post Processed Differential ____

Real-Time Differential ____

Mapping Grade GPS X : Post Processed Differential ____

Real-Time Differential X

4. **Letter size copy of the topography map showing the well location.**

I the undersigned, hereby certify this data is correct to the best of my knowledge and belief and shows all the information required by law and the regulations issued and prescribed by the Office of Oil and Gas.

GIMBY
Signature

Asset Development Manager

Title

6/1/25

Date

06/13/2025