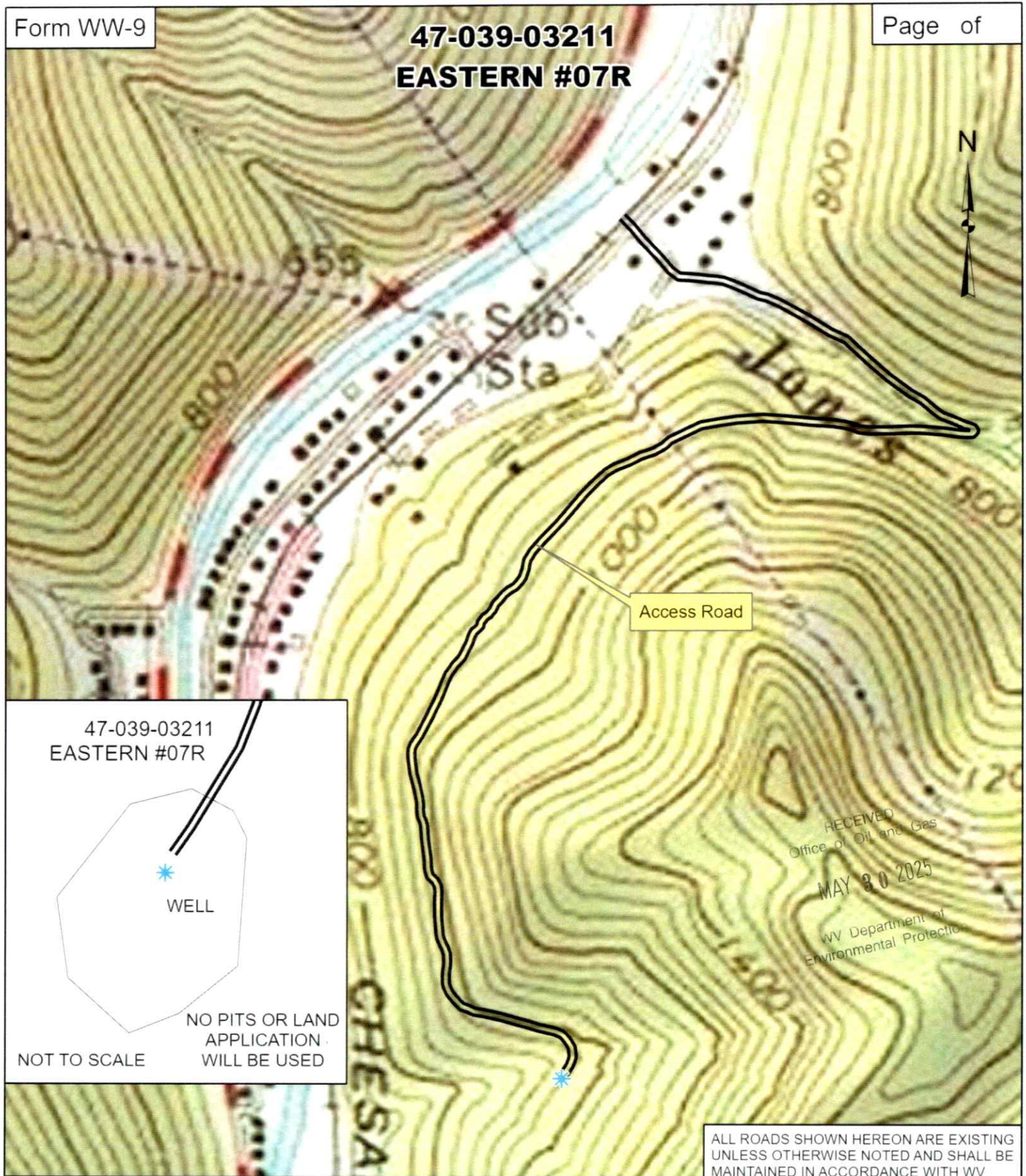


**47-039-03211
EASTERN #07R**

47-039-03211
EASTERN #07R

WELL

NOT TO SCALE

NO PITS OR LAND
APPLICATION
WILL BE USED

RECEIVED
Office of Oil and Gas
MAY 30 2025
WV Department of
Environmental Protection

GREYLOCK
ENERGY

Greylock Conventional, LLC

500 Corporate Landing Charleston, WV 25311
304-925-6100 - www.greylockenergy.com

Date: 4/24/2025

0 150 300 600 900 1,200



Feet

1:6,000



TOPO SECTION OF USGS
CEDAR GROVE 7.5' QUADRANGLE

ALL ROADS SHOWN HEREON ARE EXISTING
UNLESS OTHERWISE NOTED AND SHALL BE
MAINTAINED IN ACCORDANCE WITH WV
D.E.P. OIL AND GAS BMP MANUAL
ENTRANCES AT COUNTY/STATE ROADS
SHALL BE MAINTAINED WITH WV D.O.T.
REGULATION. SEPARATE PERMITS MAY
BE REQUIRED BY D.O.T.

EARTHWORK CONTRACTORS ARE
RESPONSIBLE FOR NOTIFICATION TO THE
OPERATOR AND IN **06/13/2025** TO ANY
DEVIATION FROM THIS PLAN.

Well Location Map for
47-039-03211
EASTERN #07R

Northing: 4223514.762
Easting: 464734.8606
Elevation: 961ft

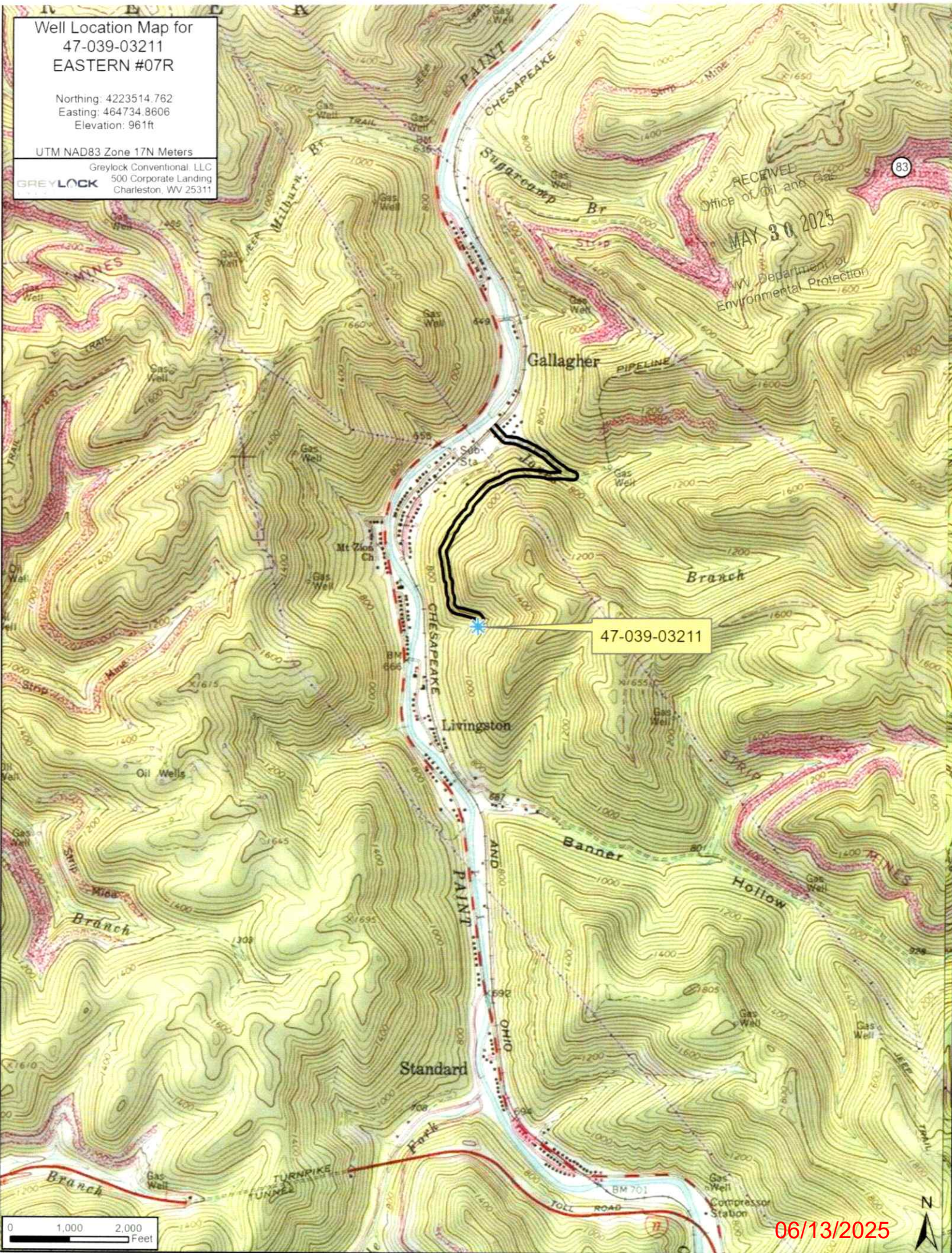
UTM NAD83 Zone 17N Meters

GREYLOCK
Greylock Conventional, LLC
500 Corporate Landing
Charleston, WV 25311

RECEIVED
Office of Oil and Gas
MAY 30 2025
WV Department of
Environmental Protection

47-039-03211

06/13/2025



WW-7
8-30-06



West Virginia Department of Environmental Protection
Office of Oil and Gas

WELL LOCATION FORM: GPS

API: 47-039-03211 WELL NO.: 07R

FARM NAME: EASTERN

RESPONSIBLE PARTY NAME: Greylock Conventional, LLC

COUNTY: Kanawha DISTRICT: Cabin Creek

QUADRANGLE: Cedar Grove

SURFACE OWNER: _____

ROYALTY OWNER: _____

UTM GPS NORTHING: 4223514.762

UTM GPS EASTING: 464734.8606 GPS ELEVATION: 961 ft

The Responsible Party named above has chosen to submit GPS coordinates in lieu of preparing a new well location plat for a plugging permit or assigned API number on the above well. The Office of Oil and Gas will not accept GPS coordinates that do not meet the following requirements:

1. Datum: NAD 1983, Zone: 17 North, Coordinate Units: meters, Altitude: height above mean sea level (MSL) – meters.
2. Accuracy to Datum – 3.05 meters
3. Data Collection Method:

Survey grade GPS _____: Post Processed Differential _____

Real-Time Differential _____

Mapping Grade GPS X: Post Processed Differential _____

Real-Time Differential X

4. **Letter size copy of the topography map showing the well location.**

I the undersigned, hereby certify this data is correct to the best of my knowledge and belief and shows all the information required by law and the regulations issued and prescribed by the Office of Oil and Gas.

G. M. C.
Signature

Asset Dev. Manager
Title

6/1/25
Date

RECEIVED
Office of Oil and Gas
MAY 30 2025
WV Department of
Environmental Protection

06/13/2025