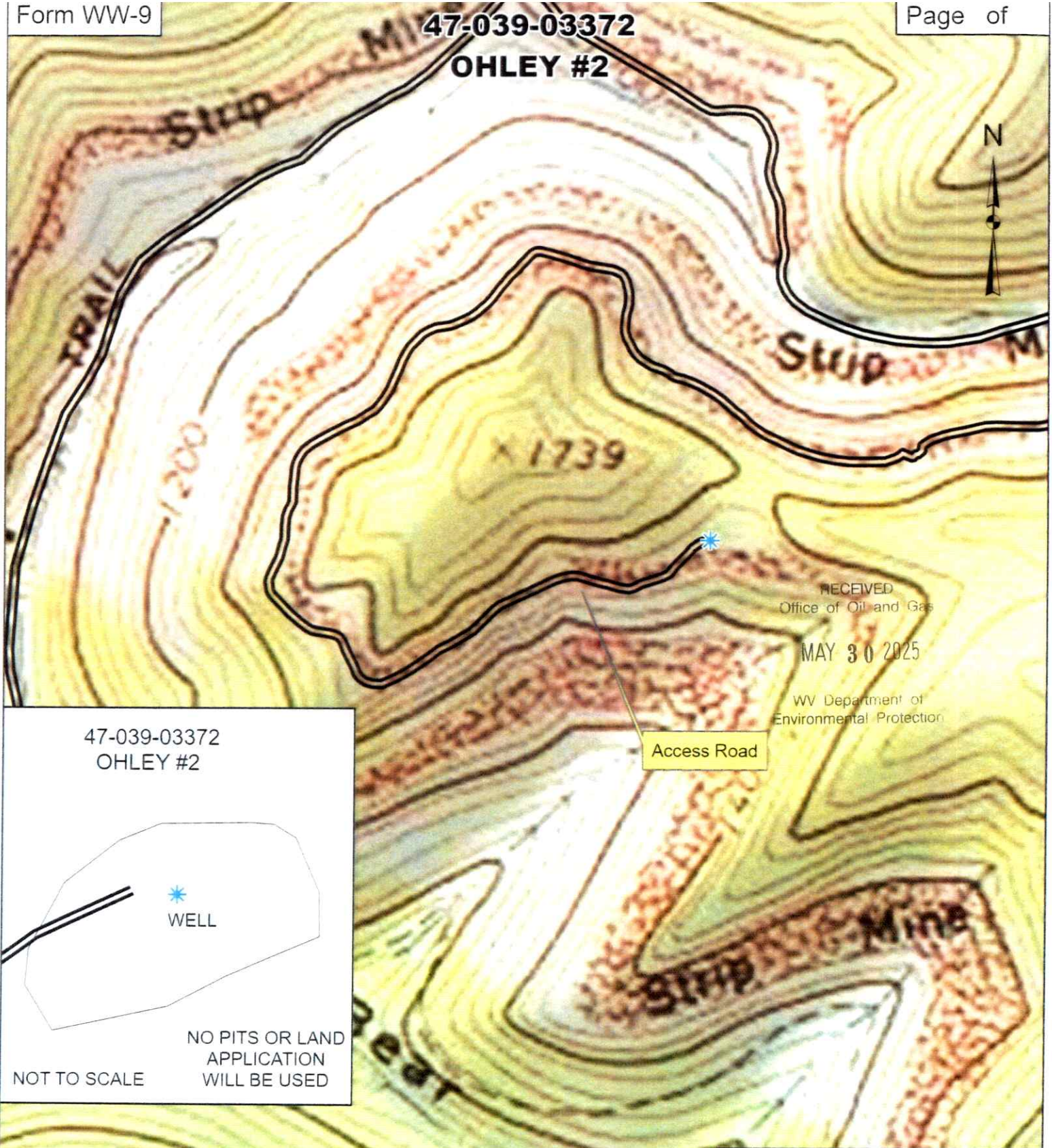


OHLEY #2

47-039-03372
OHLEY #2

WELL

NOT TO SCALE

NO PITS OR LAND
APPLICATION
WILL BE USED

Access Road

RECEIVED
Office of Oil and Gas

MAY 30 2025

WV Department of
Environmental Protection**GREYLOCK**
ENERGY

Greylock Conventional, LLC

500 Corporate Landing Charleston, WV 25311
304-925-6100 - www.greylockenergy.com

Date: 4/28/2025

0 150 300 600 900 1,200



Feet

1:6,000

TOPO SECTION OF USGS
ESKDALE 7.5' QUADRANGLE

ALL ROADS SHOWN HEREON ARE EXISTING
UNLESS OTHERWISE NOTED AND SHALL BE
MAINTAINED IN ACCORDANCE WITH WV
D.E.P. OIL AND GAS BMP MANUAL
ENTRANCES AT COUNTY/STATE ROADS
SHALL BE MAINTAINED WITH WV D.O.T.
REGULATION. SEPARATE PERMITS MAY
BE REQUIRED BY D.O.T.

EARTHWORK CONTRACTORS ARE
RESPONSIBLE FOR NOTIFICATION TO THE
OPERATOR AND INSPECTOR PRIOR TO ANY
DEVIATION FROM THE PLAN

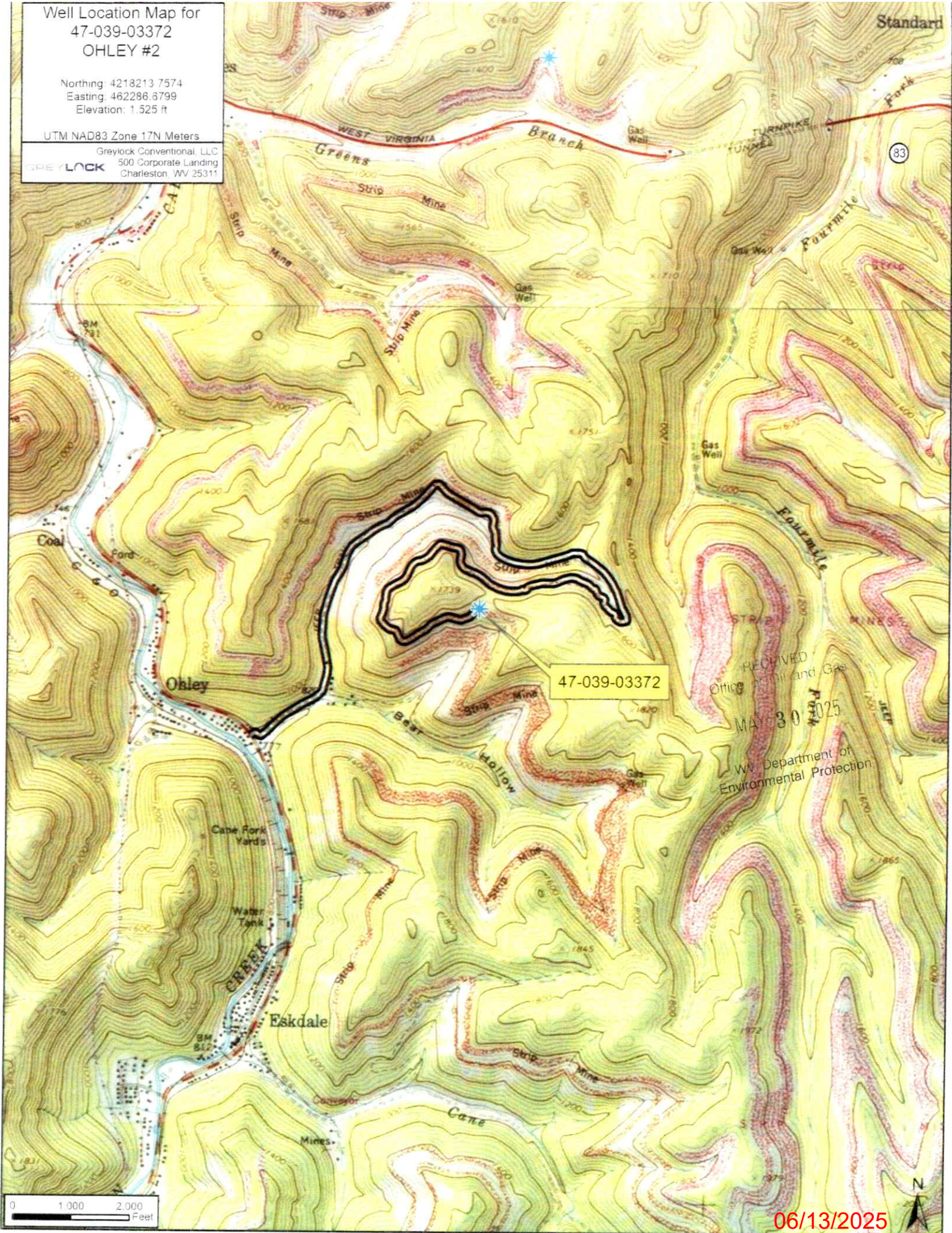
06/13/2025

Well Location Map for
47-039-03372
OHLEY #2

Northing: 4218213.7574
Easting: 462286.6799
Elevation: 1,525 ft

UTM NAD83 Zone 17N Meters

GREYLOCK
Greylock Conventional, LLC
500 Corporate Landing
Charleston, WV 25311





West Virginia Department of Environmental Protection
Office of Oil and Gas
WELL LOCATION FORM: GPS

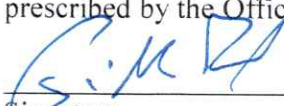
API: 47-039-03372 WELL NO.: 2
FARM NAME: OHLEY
RESPONSIBLE PARTY NAME: Greylock Conventional, LLC
COUNTY: Kanawha DISTRICT: Cabin Creek
QUADRANGLE: Eskdale
SURFACE OWNER: _____
ROYALTY OWNER: _____
UTM GPS NORTHING: 4218213.7574
UTM GPS EASTING: 462286.6799 GPS ELEVATION: 1,525 ft

The Responsible Party named above has chosen to submit GPS coordinates in lieu of preparing a new well location plat for a plugging permit or assigned API number on the above well. The Office of Oil and Gas will not accept GPS coordinates that do not meet the following requirements:

1. Datum: NAD 1983, Zone: 17 North, Coordinate Units: meters, Altitude: height above mean sea level (MSL) – meters.
2. Accuracy to Datum – 3.05 meters
3. Data Collection Method:
Survey grade GPS ____: Post Processed Differential ____
Real-Time Differential ____
Mapping Grade GPS X: Post Processed Differential ____
Real-Time Differential X

4. **Letter size copy of the topography map showing the well location.**

I the undersigned, hereby certify this data is correct to the best of my knowledge and belief and shows all the information required by law and the regulations issued and prescribed by the Office of Oil and Gas.


Signature

Asset Development Manager
Title

6/1/2025
Date

RECEIVED
Office of Oil and Gas
MAY 30 2025
WV Department of
Environmental Protection

06/13/2025