

WW-7
8-30-06



West Virginia Department of Environmental Protection
Office of Oil and Gas
WELL LOCATION FORM: GPS

API: 47-039-05143 WELL NO.: WV 202751 (Briar Mountain Unit #1)
FARM NAME: Briar Mountain Coal Corp.
RESPONSIBLE PARTY NAME: EQT Production Company
COUNTY: Kanawha DISTRICT: Cabin Creek
QUADRANGLE: Eskdale 7.5'
SURFACE OWNER: Briar Mountain Coal & Coke Co. & Penn Virginia Operating Co., LLC.
ROYALTY OWNER: Penn Virginia Operating Co., LLC., et. al.
UTM GPS NORTHING: 4211645
UTM GPS EASTING: 463951 GPS ELEVATION: 652 m (2140 ft)

The Responsible Party named above has chosen to submit GPS coordinates in lieu of preparing a new well location plat for a plugging permit or assigned API number on the above well. The Office of Oil and Gas will not accept GPS coordinates that do not meet the following requirements:

- Datum: NAD 1983, Zone: 17 North, Coordinate Units: meters, Altitude: height above mean sea level (MSL) – meters.
- Accuracy to Datum – 3.05 meters
- Data Collection Method:
Survey grade GPS : Post Processed Differential
Real-Time Differential
Mapping Grade GPS X: Post Processed Differential X
Real-Time Differential

Received
JUN 16 2014

Office of Oil and Gas
WV Dept. of Environmental Protection

4. Letter size copy of the topography map showing the well location.
I the undersigned, hereby certify this data is correct to the best of my knowledge and belief and shows all the information required by law and the regulations issued and prescribed by the Office of Oil and Gas.

Signature

PS# 2180
Title

5/22/14
Date

3905143 P

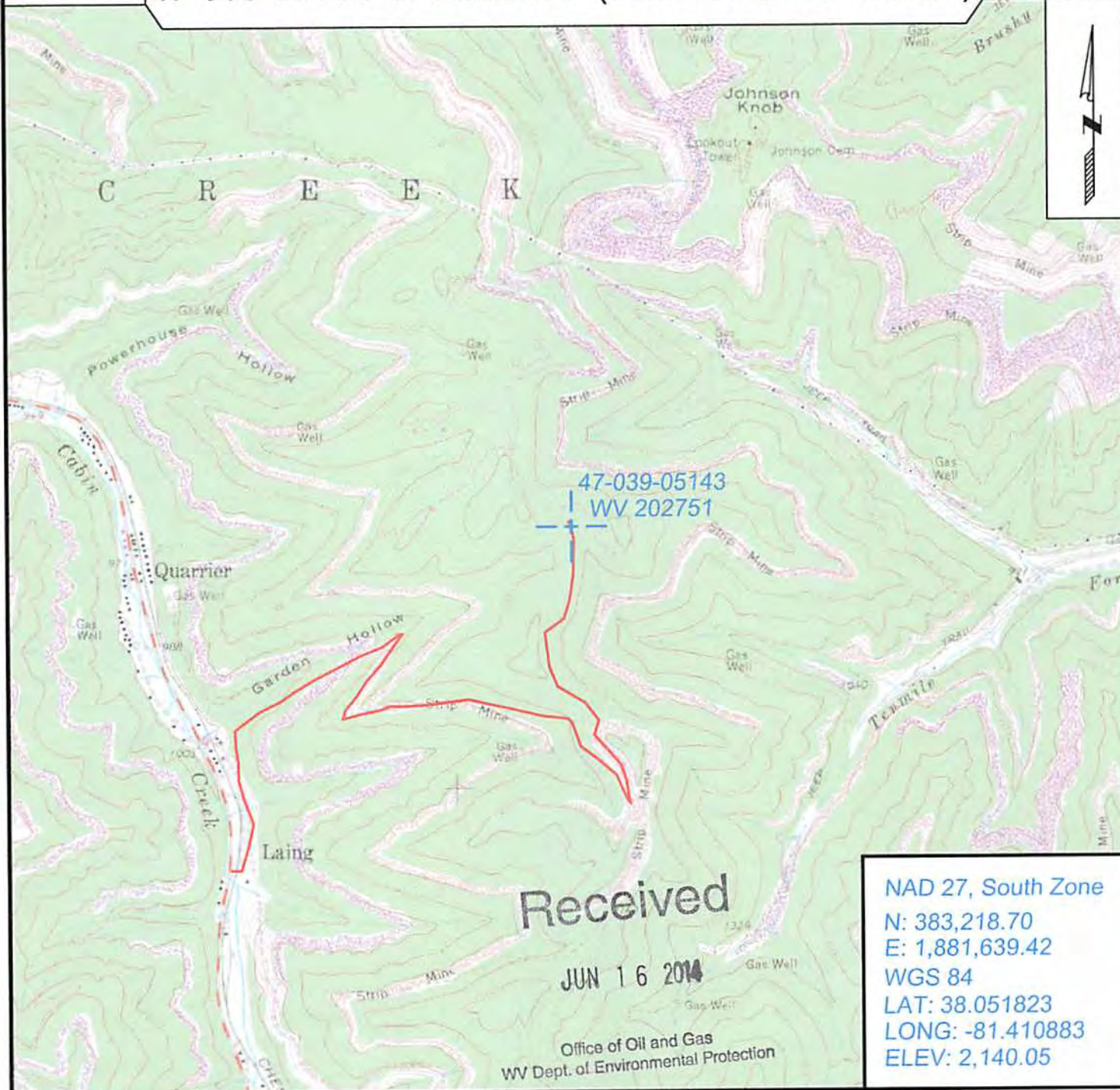
Topo Quad: Eskdale 7.5' Scale: 1" = 2000'

County: Kanawha Date: May 12, 2014

District: Cabin Creek Project No: 52-14-00-07

47-039-05143 WV 202751 (Briar Mountain Unit #1)

Topo



NAD 27, South Zone
 N: 383,218.70
 E: 1,881,639.42
 WGS 84
 LAT: 38.051823
 LONG: -81.410883
 ELEV: 2,140.05



SURVEYING AND MAPPING SERVICES PERFORMED BY:
ALLEGHENY SURVEYS, INC.
 1-800-482-8606
 237 Birch River Road
 Birch River, WV 26610
 PH: (304) 649-8606
 FAX: (304) 649-8608

PREPARED FOR:
EQT Production Company
 P.O. Box 280
 Bridgeport, WV 26330