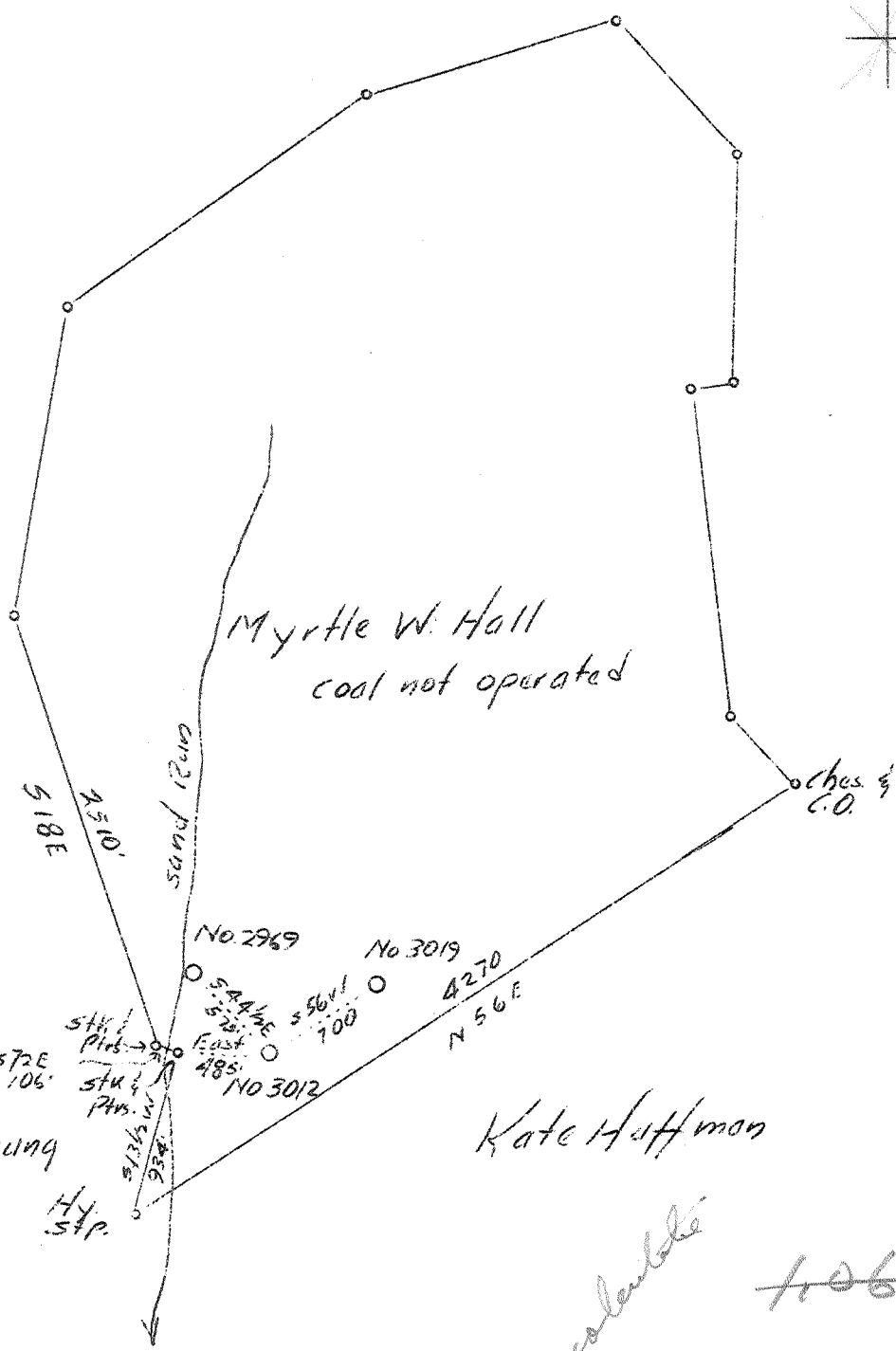


LATITUDE 38° 30'

LONGITUDE 81° 24' 25"

2.25
0.10W



C.A. Ray

Myrtle W. Hall
coal not operated

Ches. & C.O.

Sand Run

No. 2969
No. 3019
No. 3012
No. 4270

J.M. Young

Kate Huffman

Abandonment

Recalculated

~~106 W~~
~~200 A~~

Company	Virginian Gasoline & Oil Co.
Address	Charleston, W.Va.
Farm	Myrtle W. Hall
Tract	Acres 412 Lease No. 27458
Well (Farm) No.	9 Serial No. 3012
Elevation (Spirit Level)	835
Quadrangle	Clendenin
County	Kanawha District <i>Big Sandy</i>
Engineer	G.A. Cunningham
Engineer's Registration No.	659
File No.	72-67 Drawing No.
Date	July 9, 1937 Scale 1"=1000'

STATE OF WEST VIRGINIA
Department of Mines
OIL AND GAS DIVISION
CHARLESTON

WELL LOCATION MAP
File No. KAN-218A

Denotes location of well on United States Topographic Maps, scale 1 to 62,500, latitude and longitude lines being represented by border lines as shown.

Denotes one inch spaces on border line of original tracing.

212A

Big Sandy District, Kanawha County, W. Va.
 By Virginian Gasoline & Oil Co., Charleston, W. Va.
 On 412 acres, on Sand Run of Elk River; surface and minerals owned by
 Myrtle W. Hall, Charleston, W. Va.
 Elevation, 835.0' L.
 Drilling commenced Dec. 31, 1912; completed, Feb. 14, 1913.
 Shot April 3, 1929, at 2071'.
 Oil, 5 bbls. 1st 24 hrs.
 Salt water at 1280'.
 10" casing, 61'; 8 $\frac{1}{4}$ ", 750' (pulled); 6 $\frac{5}{8}$ ", 1808'.
 Oil well. Abandonment reported to Dept. of Mines July 9, 1937.
 Record to RCT from Mrs. Griffith 7-24-37.

	Top.	Bottom.
Red rock	0	50
Lime	50	100
Red rock	100	175
Sand	175	260
Red rock	260	300
Lime	300	340
Slate	340	400
Sand	400	430
Slate	430	500
Lime	500	550
Slate	550	600
Sand	600	700
Slate	700	725
Sand	725	755
Slate and shells	755	900
Sand	900	1075
Slate and shells	1075	1200
Salt Sand	1200	1645
Red rock	1645	1650
Lime shells	1650	1745
Little Lime	1745	1781
Slate	1781	1786
Lime shells	1786	1791
Pencil Cave	1791	1796
Big Lime	1796	1921
Big Injun Sand (gas, 1931')	1921	1981
Slate and shells	1981	2069
Oil sand (pay, 2069-2074')	2069	2081
Total depth		2081

WEST VIRGINIA DEPARTMENT OF MINES
OIL AND GAS DIVISION

494 ✓

WELL RECORD

Permit No. Ab 218 A Oil or Gas Well 011
(Kind)

Company Virginian Gasoline & Oil Company
Address Charleston, West Virginia
Farm C. T. Woods Acres 412
Location (waters) Sand Run of Elk River
Well No. 3012 Elev. 835.0
District Big Sandy County Kanawha
The surface of tract is owned in fee by Myrtle W. Hall Address Charleston, W. Va.
Mineral rights are owned by same Address _____
Drilling commenced Dec. 31, 1912
Drilling completed Feb. 14, 1913
Date shot 4/3/29 Depth of shot 2071
Open Flow /10ths Water in _____ Inch
/10ths Merc. in _____ Inch
Volume _____ Cu. Ft.
Rock Pressure _____ lbs. _____ hrs.
Oil 5 bbls., 1st 24 hrs.
Fresh water _____ feet
Salt water 1280 feet

Casing and Tubing	Used in Drilling	Left in Well	Packers
Size			Kind of Packer
16			
13			
10	61	61	Size of
8 1/4	750	---	
6 5/8	1808	1808	Depth set
5 3/16			
3			Perf. top
2			Perf. bottom
Liners Used			Perf. top
			Perf. bottom

CASING CEMENTED _____ SIZE _____ No. FT. _____ Date _____
COAL WAS ENCOUNTERED AT _____ FEET _____ INCHES
_____ FEET _____ INCHES FEET _____ INCHES
_____ FEET _____ INCHES FEET _____ INCHES

Formation	Color	Hard or Soft	Top	Bottom	Oil Gas or Water	Depth Found	Remarks
Red Rock				50			
Lime			50	100			
Red Rock			100	175			
Sand			175	260			
Red Rock			260	300			
Lime			300	340			
Slate			340	400			
Sand			400	430			
Slate			430	500			
Lime			500	550			
Slate			550	600			
Sand			600	700			
Slate			700	725			
Sand			725	755			
Slate & Shells			755	900			
Sand			900	1075			
Slate & Shells			1075	1200			
Salt Sand			1200	1645			
Red Rock			1645	1650			
Lime Shells			1650	1745			
Little Lime			1745	1781			
Slate			1781	1786			
Lime Shells			1786	1791			
Pencil Cave			1791	1796			
Big Lime			1796	1921			
Injun Sand			1921	1981			
Slate & Shells			1981	2069			
Oil Sand			2069	2081			
Total Depth				2081			

Injun 1931 Gas
Pay 2069-2074

