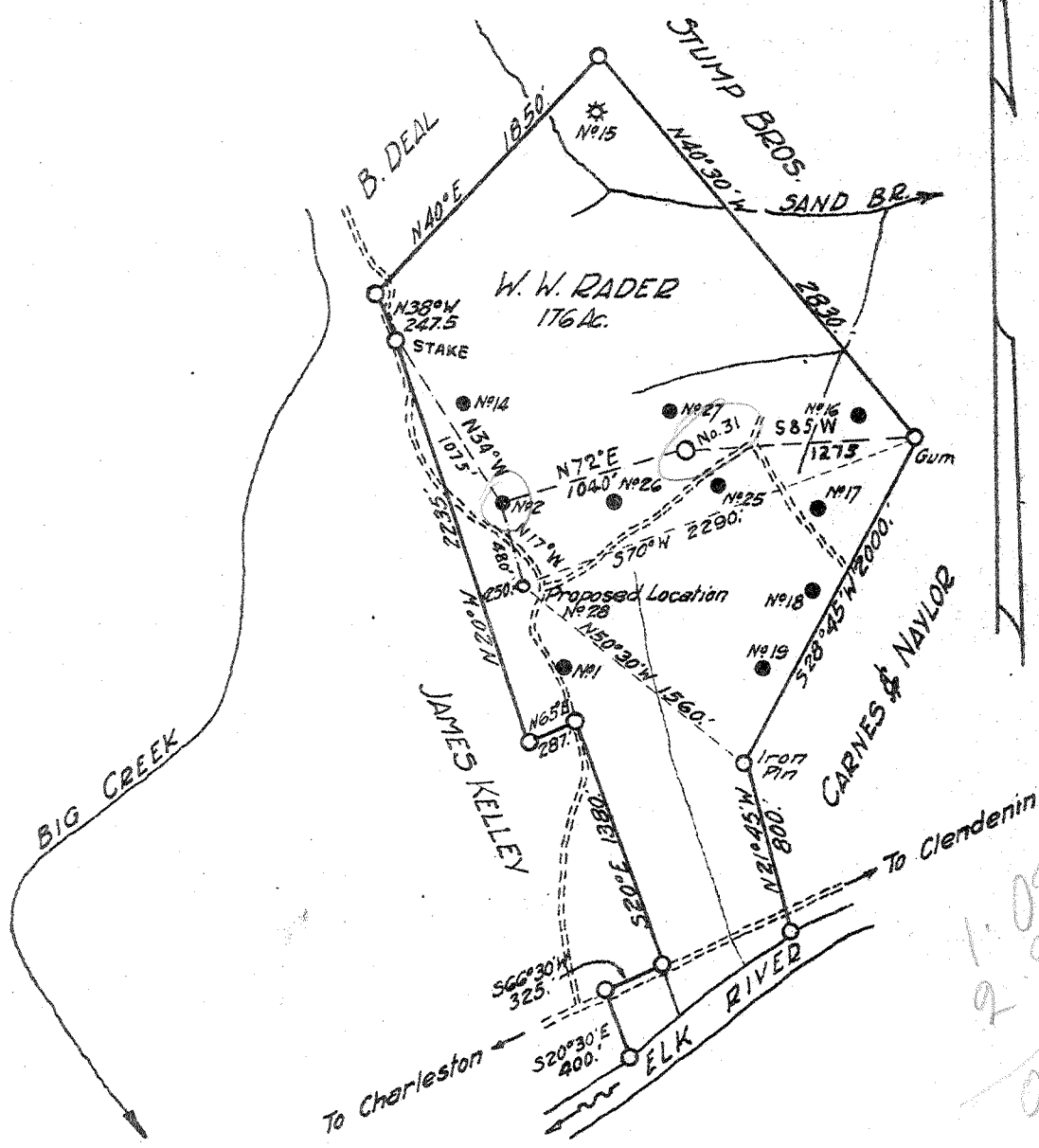


Latitude 38° 30'

Longitude 81° 20'



1.025
 2.285
 0.735
 1.75

New Location
 Drill Deeper
 Abandonment

NOTE - WELL No. 2 ABANDONED
 PROPOSED WELL LOC. No. 31

Company SILMAN OIL & GAS CO.
 Address CHARLESTON, W. VA.
 Farm W. W. RADER
 Tract _____ Acres 176 Lease No. _____
 Well (Farm) No. 28 Serial No. _____
 Elevation (Spirit Level) 1050'
 Quadrangle CLENDENIN-NE
 County KANAWHA District BIG SANDY
 Engineer A. E. PRICE
 Engineer's Registration No. 819
 File No. _____ Drawing No. _____
 Date 12/27/39 Scale 1"=1000'

STATE OF WEST VIRGINIA
 DEPARTMENT OF MINES
 OIL AND GAS DIVISION
 CHARLESTON

WELL LOCATION MAP
 FILE NO. KAN-678-329A
 31

+ Denotes location of well on United States Topographic Maps, scale 1 to 62,500, latitude and longitude lines being represented by border lines as shown.
 - Denotes one inch spaces on border line of original tracing.