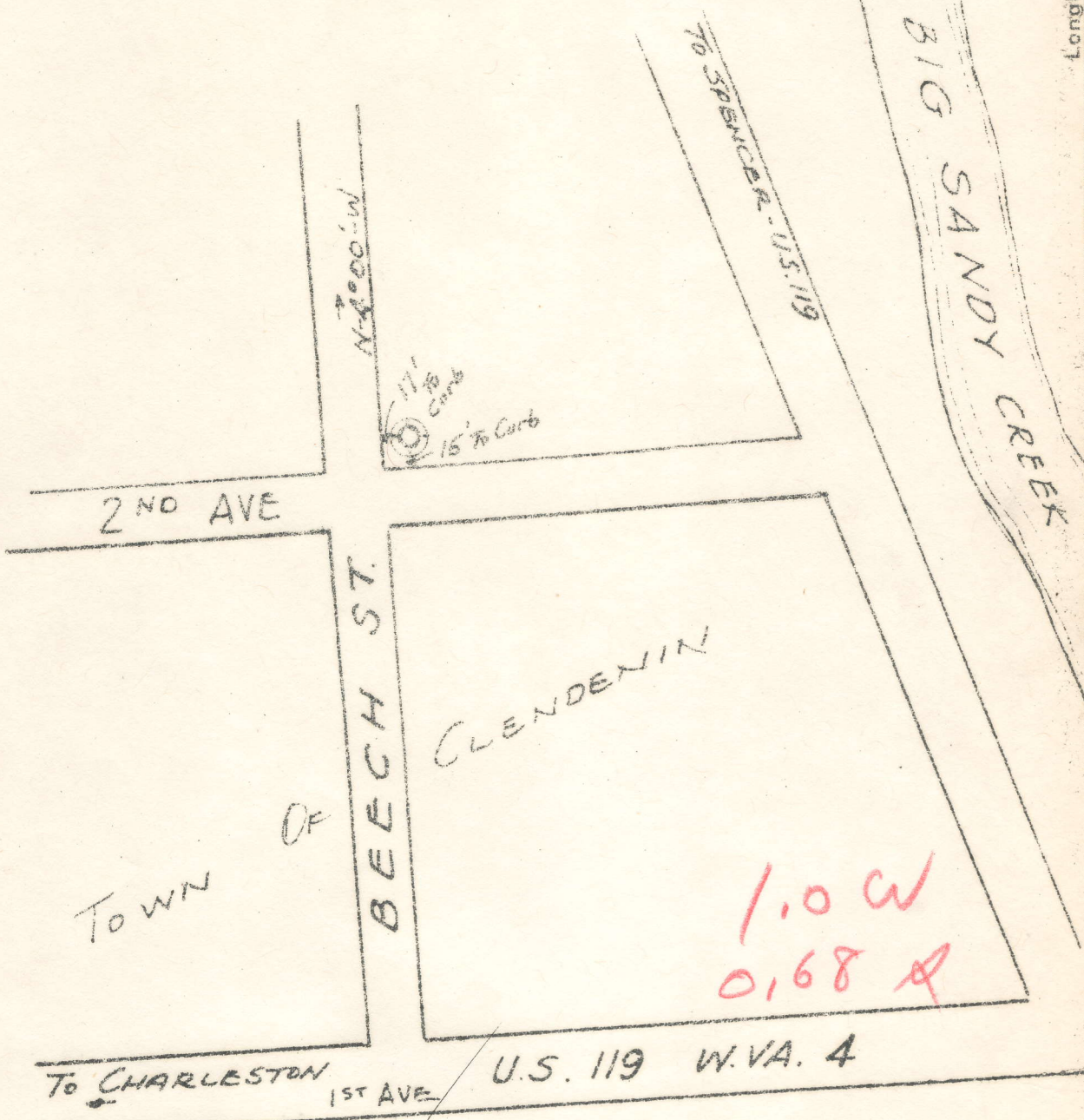
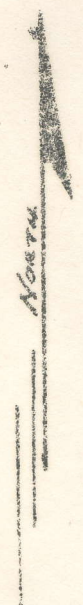


Latitude 39° 30'



Longitude 80° 20'



New Location
 Drill Deeper
 Abandonment

W E L K R I V E R

Company SILMAN OIL
 Address CLENDENIN W.VA.
 Farm JOHN LEE LOT
 Tract _____ Acres _____ Lease No. _____
 Well (Farm) No. _____ Serial No. _____
 Elevation (Spirit Level) 635
 Quadrangle CLENDENIN **HC**
 County KANAWHA District BIG SANDY
 Engineer A. E. PRICE
 Engineer's Registration No. _____
 File No. _____ Drawing No. _____
 Date OCT. 8, 1945 Scale 1" = 100'

STATE OF WEST VIRGINIA
 DEPARTMENT OF MINES
 OIL AND GAS DIVISION
 CHARLESTON

WELL LOCATION MAP
 FILE NO. KAN-451-A

+ Denotes location of well on United States Topographic Maps, scale 1 to 62,500, latitude and longitude lines being represented by border lines as shown.

- Denotes one inch spaces on border line of original tracing.

60 279

STATE OF WEST VIRGINIA
DEPARTMENT OF MINES
OIL AND GAS DIVISION

1166

WELL RECORD

Permit No. 51-A Oil or Gas Well (Kind) Both

Company Silmon Oil Company
 Address Box 286, Clendenin, W. Va.
 Farm John Lee Acres Small
 Location (waters) Big River
 Well No. I Elev. 635
 District Big Sandy County Kanawha
 The surface of tract is owned in fee by John Lee
Clendenin, W. Va. Address
 Mineral rights are owned by Con Ryan
 Address Clendenin, W. Va.
 Drilling commenced
 Drilling completed 1922
 Date shot Depth of shot
 Open Flow /10ths Water in Inch
 /10ths Merc. in Inch
 Volume Cu. Ft.
 Rock Pressure lbs. hrs.
 Oil bbls., 1st 24 hrs.
 Fresh water feet feet
 Salt water feet feet

Casing and Tubing	Used in Drilling	Left in Well	Packers
Size			Kind of Packer
16			
13			Combination
10			Size of <u>6 5/8</u>
8 1/4	<u>87</u>	<u>87</u>	Depth set <u>1100</u>
6 5/8	<u>611</u>	<u>611</u>	
5 3/16	<u>1337</u>	<u>1337</u>	
3			Perf. top
2			Perf. bottom
Liners Used			Perf. top
			Perf. bottom

CASING CEMENTED SIZE No. FT. Date
 COAL WAS ENCOUNTERED AT FEET INCHES
 FEET INCHES FEET INCHES
 FEET INCHES FEET INCHES

Formation	Color	Hard or Soft	Top	Bottom	Oil Gas or Water	Depth Found	Remarks
Surface Slate & Sand			0	680			
Gas Sand			680	730			
Slate			730	735			
Salt Sand			735	1140			
Slate & Shell			1140	1290			
Pencil Cave			1290	1292			
Big Lime			1292	1450			
Slate & Shell			1450	1561			
Weir Sand			1561	1708			
Slate			1708	1728			
Total Depth				1728			
Oil			1702	1708			

Note - 1724"2" tubing set on combination packer at 1100 feet, with 1100 feet of 3/4 pipe set in top of packer.

