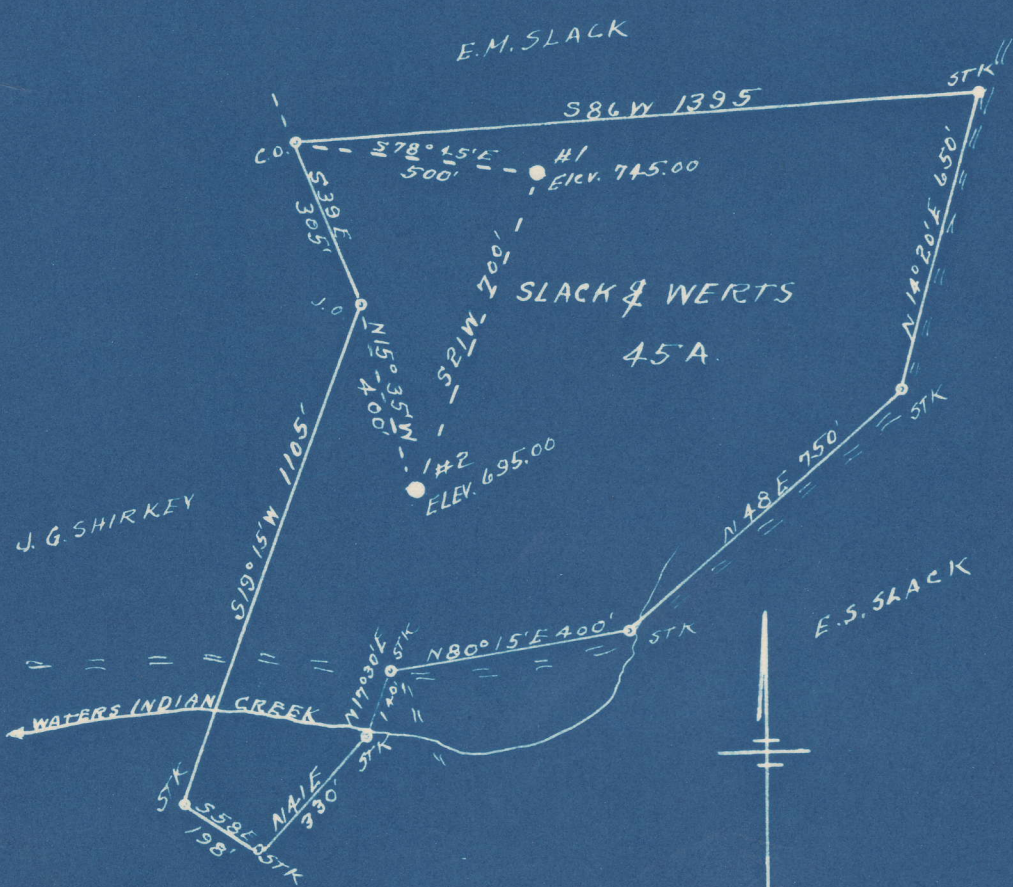


Latitude 38° 25'

Longitude 81° 25'



# 1	0.74	S
	4.50	W
# 2	0.80	S
	4.53	W

New Location...   
 Drill Deeper...   
 Abandonment...

Company OKMULGEE SUPPLY CORP.  
 Address OKMULGEE OKLA.  
 Farm SLACK & WERTS  
 Tract \_\_\_\_\_ Acres 45 Lease No. WC  
 Well (Farm) No. S 1-2 Serial No. \_\_\_\_\_  
 Elevation (Spirit Level) #1- 695.00 - #2- 745.00  
 Quadrangle CLENDENYIN  
 County KANAWHA District ELK  
 Engineer C. F. Ry+  
 Engineer's Registration No. 804  
 File No. \_\_\_\_\_ Drawing No. \_\_\_\_\_  
 Date 7-23-48 Scale 1" = 400'

STATE OF WEST VIRGINIA  
 DEPARTMENT OF MINES  
 OIL AND GAS DIVISION  
 CHARLESTON

WELL LOCATION MAP  
 FILE NO. KAN-521-A-#1  
KAN-522-A-#2

+ Denotes location of well on United States Topographic Maps, scale 1 to 62,500, latitude and longitude lines being represented by border lines as shown.  
 - Denotes one inch spaces on border line of original tracing.

6-0.217

SLACK-WERTZ NO. 2 WELL.

522A

Elk District, Kanawha County, W. Va.  
By Okmulgee Supply Corp., Box 911, Okmulgee, Okla.  
Abandoned under permit Kan-.....-A?  
On ..... acres.  
Elevation, ..... ' L.  
Shot March 4, 1912, at 1735-1745', March 4, 1912, at 1848-1858', and  
April 24, 1915, at 1848-1858'.  
8 $\frac{5}{8}$ " casing, 454'; 7", 1487'; all left in.  
Oil well. Record to Dept. of Mines stamped Aug. 10, 1948.  
Record to RCT from Mrs. Griffith Sept. 23, 1948. Old File No. 1313.

	Top.	Bottom.
Salt Sand	760	- 1284
Maxton Sand	1325	- 1370
Big Lime	1465	- 1640
Squaw Sand	1735	- 1755
Weir Sand	1790	- 1868
Total depth		1870



1313

STATE OF WEST VIRGINIA  
DEPARTMENT OF MINES  
OIL AND GAS DIVISION

WELL RECORD

Permit No. 5211-A

Oil or Gas Well \_\_\_\_\_  
(KIND)

Company OKMULGEE SUPPLY CORP.  
Address Box 911 - Okmulgee, Okla.  
Farm Slack-Wertz Acres \_\_\_\_\_  
Location (waters) \_\_\_\_\_  
Well No. No. 2 Elev. \_\_\_\_\_  
District ELK County Kanawha  
The surface of tract is owned in fee by \_\_\_\_\_  
Address \_\_\_\_\_  
Mineral rights are owned by \_\_\_\_\_  
Address \_\_\_\_\_  
Drilling commenced \_\_\_\_\_  
Drilling completed \_\_\_\_\_  
Date Shot 3-4-12 From 1735 To 1745  
With 3-4-12 1848 1858  
4-24-15 1848 1858  
Open Flow \_\_\_\_\_/10ths Water in \_\_\_\_\_ Inch  
\_\_\_\_\_/10ths Merc. in \_\_\_\_\_ Inch  
Volume \_\_\_\_\_ Cu. Ft.  
Rock Pressure \_\_\_\_\_ lbs. \_\_\_\_\_ hrs.  
Oil \_\_\_\_\_ bbls., 1st 24 hrs.  
Fresh water \_\_\_\_\_ feet \_\_\_\_\_ feet  
Salt water \_\_\_\_\_ feet \_\_\_\_\_ feet

Casing and Tubing	Used in Drilling	Left in Well	Packers
Size			Kind of Packer
16			
13			
10			Size of
8 5/8"	454'	454'	all
6 5/8"	1487'	1487'	Depth set 1350
5 3/16			
3			Perf. top
2			Perf. bottom
Liners Used			Perf. top
			Perf. bottom

CASING CEMENTED \_\_\_\_\_ SIZE \_\_\_\_\_ No. Ft. \_\_\_\_\_ Date \_\_\_\_\_  
COAL WAS ENCOUNTERED AT \_\_\_\_\_ FEET \_\_\_\_\_ INCHES  
\_\_\_\_\_ FEET \_\_\_\_\_ INCHES FEET \_\_\_\_\_ INCHES  
\_\_\_\_\_ FEET \_\_\_\_\_ INCHES FEET \_\_\_\_\_ INCHES

Formation	Color	Hard or Soft	Top	Bottom	Oil, Gas or Water	Depth Found	Remarks
Salt Sand			760	1284			
Maxon Sand			1325	1370			
Big Lime			1465	1640			
Squaw Sand			1735	1755			
Weir Sand			1790	1868			
Total Depth				1870			

