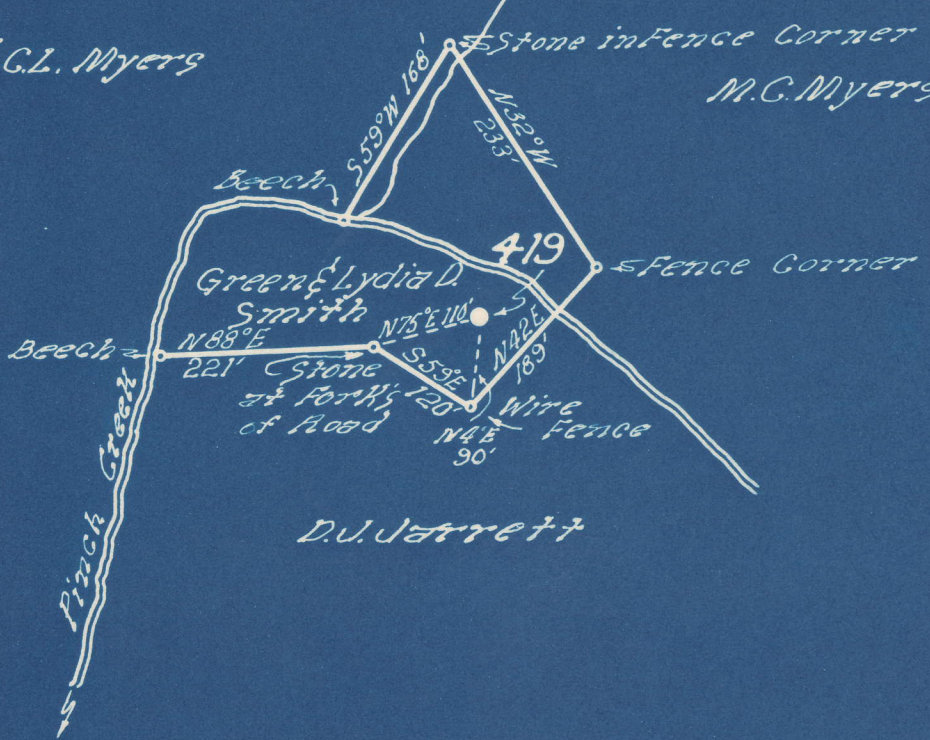


Latitude 39° 25'

Longitude 81° 25'

G.A. & G.L. Myers

M.G. Myers



D.J. Jarrett

0.14 S  
4.02 W

New Location   
 Drill Deeper   
 Abandonment

Company VIRGINIA GASOLINE & OIL CO.  
 Address CHARLESTON, W.VA.  
 Farm GREEN & LYDIA SMITH  
 Tract \_\_\_\_\_ Acres 11 Lease No. 963  
 Well (Farm) No. 3 Serial No. 419  
 Elevation (Spirit Level) 617  
 Quadrangl CLENDENIN  
 County KANAWHA District ELK  
 Engineer J.H. Moore  
 Engineer's Registration No. 662  
 File No. 68-63 Drawing No. \_\_\_\_\_  
 Date AUGUST 11, 48 Scale 1" = 200'

STATE OF WEST VIRGINIA  
 DEPARTMENT OF MINES  
 OIL AND GAS DIVISION  
 CHARLESTON

WELL LOCATION MAP  
 FILE NO. KAN-523-A

+ Denotes location of well on United States Topographic Maps, scale 1 to 62,500, latitude and longitude lines being represented by border lines as shown.

- Denotes one inch spaces on border line of original tracing.

6-6 217

Elk District, Kanawha County, W. Va.  
 By Virginian Gasoline & Oil Co., Box 1273, Charleston, 25, W. Va.  
 Abandoned under permit Kan-.....-A?  
 On 11 acres, on Pinch Creek.  
 Elevation, 617' L.  
 Minerals owned by Vierney D. Young et al., 1229 Penna. Ave., Charleston, W. Va.  
 Drilling commenced Aug. 8, 1912; completed Sept. 26, 1912.  
 Shot Nov. 4, 1912, at 1667-1680', and Oct. 9, 1914, with 30 and 60 qts.  
 Oil, 30 bbls., 1st 2 1/2 hrs.  
 Salt water at 855'.  
 8 1/2" casing, 368'; 6 3/8", 1432'; all left in. Coal was encountered at 270-274'.  
 Oil well. Abandonment reported to Dept. of Mines Aug. 11, 1948.  
 Record to RCT from Mrs. Griffith Sept. 23, 1948. Old File No. 1314.

	Top.	Bottom.
Mud, slate, and shells	0	270
Coal	270	274
Lime, slate, and shells	274	735
Salt Sand	735	1235
Slate	1235	1275
Maxton Sand	1275	1357
Little Lime	1357	1392
Pencil Cave	1392	1400
Big Lime	1400	1555
Big Injun Sand	1555	1585
Slate and red rock	1585	1610
Slate and shells	1610	1667
Squaw Sand (gas, 1667'; oil, 1670')	1667	1685
Total depth		1685



Completed No Inspection

1314

STATE OF WEST VIRGINIA DEPARTMENT OF MINES OIL AND GAS DIVISION

WELL RECORD

Permit No. 523-A

Oil or Gas Well Oil (KIND)

ABANDONMENT

Company VIRGINIAN GASOLINE & OIL COMPANY
Address P.O. Box 1273, Charleston 25, W. Va.
Farm Green & Lydia D. Smith Acres 11
Location (waters) Pinch Creek
Well No. 419 Elev. 617-L
District Elk County Kanawha
Mineral rights are owned by Vierney D. Young, et al
1229 Penna. Ave. Address Charleston, W. Va.
Drilling commenced 8-8-12
Drilling completed 9-26-12
Date Shot 10-9-14 From 1667 To 1680
With 30 Cts. 60 Cts.

Table with columns: Casing and Tubing, Used in Drilling, Left in Well, Packers. Includes handwritten entries for sizes (16, 13, 10, 8 1/4, 6 5/8, 5 3/16, 3, 2) and packer details (9 Jumbo, 70 90 left).

Open Flow /10ths Water in Inch
/10ths Merc. in Inch
Volume Cu. Ft.
Rock Pressure lbs. hrs.
Oil 30 bbls., 1st 24 hrs.
Fresh water feet feet
Salt water 855 feet feet

CASING CEMENTED SIZE No. Ft. Date
COAL WAS ENCOUNTERED AT 270 FEET 48 INCHES
FEET INCHES FEET INCHES
FEET INCHES FEET INCHES

Table with columns: Formation, Color, Hard or Soft, Top, Bottom, Oil, Gas or Water, Depth Found, Remarks. Lists geological layers like Mud-Slate-Shells, Coal, Lime-Slate-Shells, etc., with depths and gas/oil findings.

