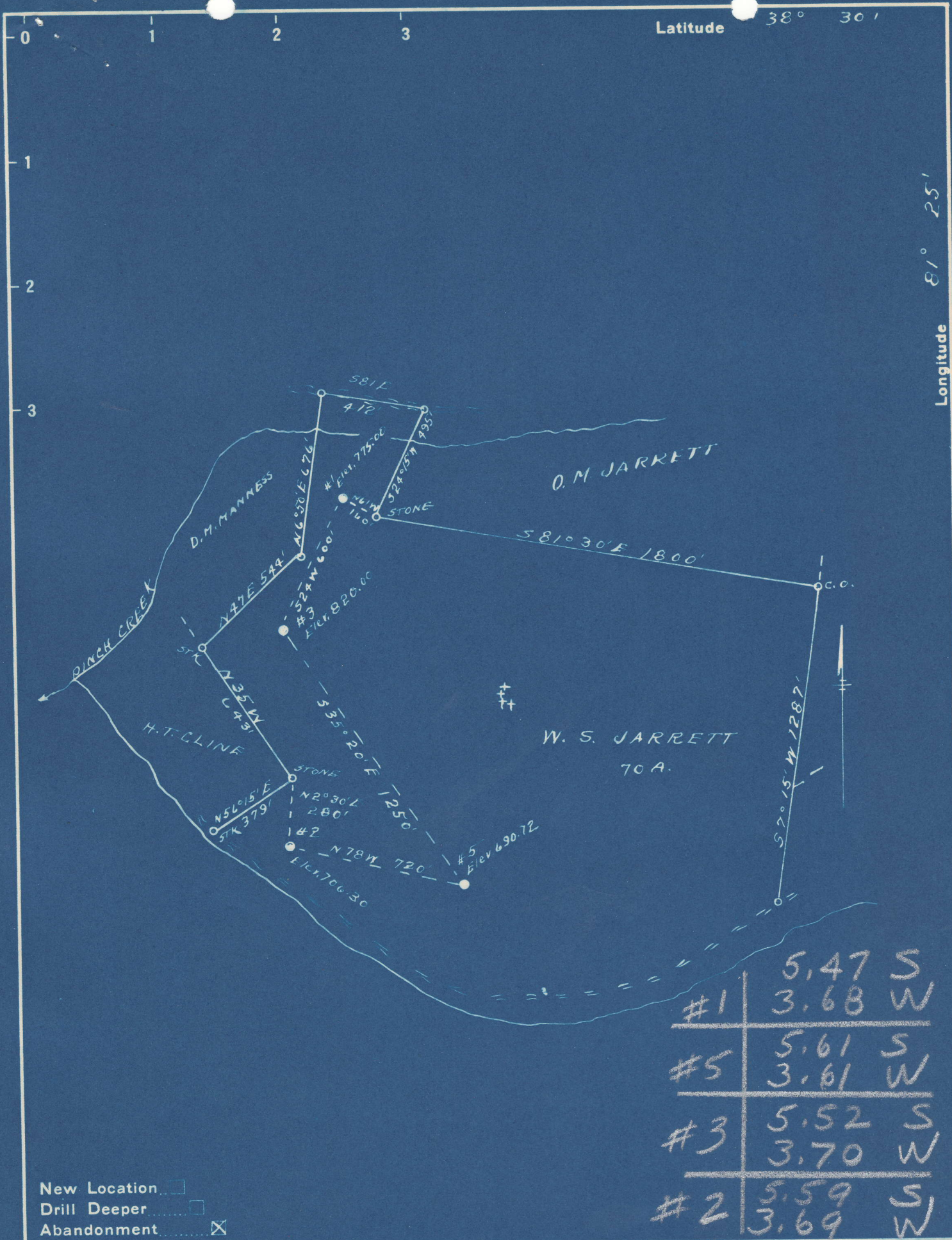


Latitude 38° 30'

Longitude 81° 25'



#1	5.47 S	3.68 W
#5	5.61 S	3.61 W
#3	5.52 S	3.70 W
#2	5.59 S	3.69 W

New Location   
 Drill Deeper   
 Abandonment

Company OKMULGEE SUPPLY CORP.  
 Address OKMULGEE, OKLA.  
 Farm W. S. JARRETT  
 Tract \_\_\_\_\_ Acres 70 Lease No. \_\_\_\_\_  
 Well (Farm) Nos 1-2-3-5 Serial No. \_\_\_\_\_ **NW**  
 Elevation (Spirit Level) SEE ABOVE  
 Quadrangle CLENDENNIN  
 County HANAWHA District ELK  
 Engineer L. F. Dye  
 Engineer's Registration No. 804  
 File No. \_\_\_\_\_ Drawing No. \_\_\_\_\_  
 Date 10-12-48 Scale 1" = 500'

STATE OF WEST VIRGINIA  
 DEPARTMENT OF MINES  
 OIL AND GAS DIVISION  
 CHARLESTON

**WELL LOCATION MAP**

FILE NO. KAN-546-A-#1  
KAN-560-A KAN-547-A-#5  
#2 KAN-554-A-#3  
 + Denotes location of well on United States  
 Topographic Maps, scale 1 to 62,500, lat-  
 itude and longitude lines being represented  
 by border lines as shown.  
 - Denotes one inch spaces on border line  
 of original tracing.

6-0 217





Completed no inspection

1331

STATE OF WEST VIRGINIA DEPARTMENT OF MINES OIL AND GAS DIVISION

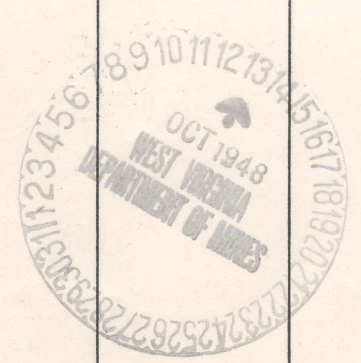
WELL RECORD

Permit No. 546A

Oil or Gas Well (KIND)

Company Okmulgee Supply Corporation, Address Okmulgee, Okla., Farm W. S. Jarrett, Well No. 1, District Elk, County Kanawha, Date Shot From 1821 To 1826, etc.

Table with 8 columns: Formation, Color, Hard or Soft, Top, Bottom, Oil, Gas or Water, Depth Found, Remarks. Rows include Coal, Salt Sand, Maxon, Big Lime, Big Injun, Squaw, Oil & Gas, Total Depth.



(Over)

JAN - 5 1949