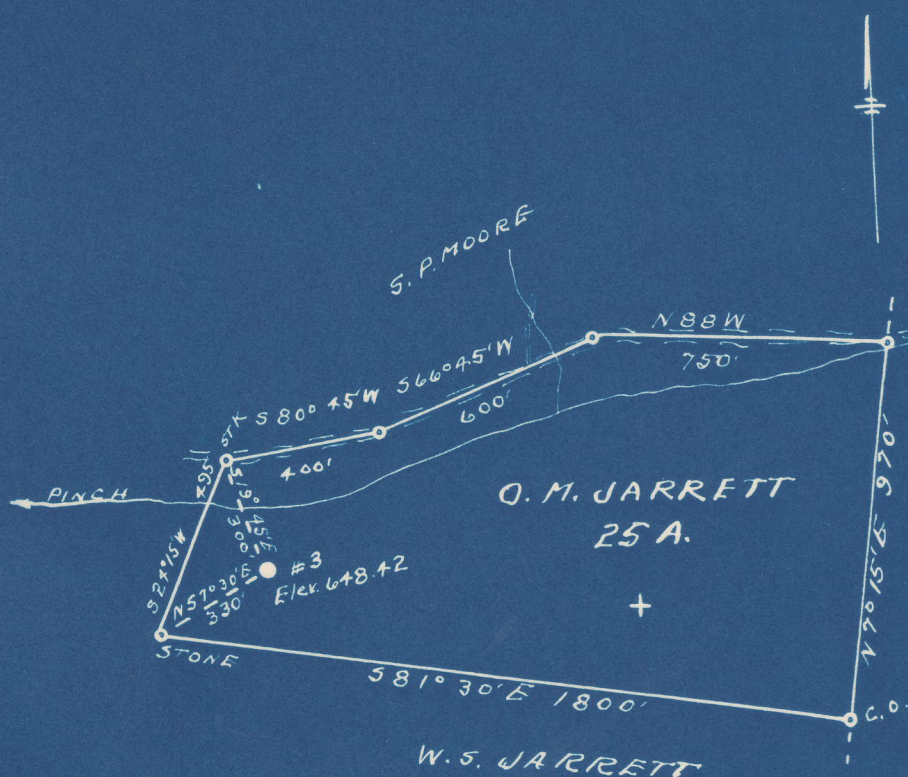


Latitude 38° 30'

Longitude 81° 25'



5.42 S
3.57 W

New Location...
 Drill Deeper.....
 Abandonment.....

Company OKMULGEE SUPPLY CORP.
 Address OKMULGEE, OKLA.
 Farm O. M. JARRETT
 Tract _____ Acres 25 Lease No. _____
 Well (Farm) No. 3 Serial No. _____
 Elevation (Spirit Level) 648.42
 Quadrangle CLENDENNIN
 County KANAWHA District ELK
 Engineer L. F. Dye
 Engineer's Registration No. 804
 File No. _____ Drawing No. _____
 Date 10-12-48 Scale 1" = 500'

STATE OF WEST VIRGINIA
 DEPARTMENT OF MINES
 OIL AND GAS DIVISION
 CHARLESTON

WELL LOCATION MAP
 FILE NO. KAN-565-A

+ Denotes location of well on United States Topographic Maps, scale 1 to 62,500, latitude and longitude lines being represented by border lines as shown.

- Denotes one inch spaces on border line of original tracing.

6-0 417

O. M. JARRETT NO. 3 WELL.

565A

Elk District, Kanawha County, W. Va.
By Okmulgee Supply Corp., Okmulgee, Okla.
Abandoned under permit Kan-.....-A?
On.....acres.

Elevation,' L.
Drilling completed in 1912.

Shot Sept. 29, 1912, at 1708-1723'; Nov. 25, 1913, at 1708-1722';

Aug. 30, 1920, at 1709-1721'; and Sept. 7, 1926, at 1707'.

8 1/2" casing, 1470'; 7" O. D., 1470'; 2" tubing, 1725'; all left in.
Oil well. Record to Dept. of Mines not dated or stamped.

Record to RCT from Mrs. Griffith Jan. 5, 1949. Old File No. 1331.

	Top.	Bottom.
Salt Sand	770	- 1245
Maxton Sand	1355	- 1410
Big Lime	1460	- 1610
Big Injun Sand	1610	- 1650
Squaw Sand (gas, 1708'; oil, 1710')	1705	- 1725
Total depth		1725



STATE OF WEST VIRGINIA
DEPARTMENT OF MINES
OIL AND GAS DIVISION

1331

WELL RECORD

Permit No.

Oil or Gas Well
(KIND)

Company Okmulgee Supply Corporation
Address Okmulgee, Okla.
Farm O. M. Jarrett Acres
Location (waters) Elk River
Well No. 3 Elev.
District Elk County Kanawha
The surface of tract is owned in fee by
Address
Mineral rights are owned by
Address
Drilling commenced
Drilling completed 1912
Date Shot From 1708 To 1723
With
Open Flow /10ths Water in Inch
/10ths Merc. in Inch
Volume Cu. Ft.
Rock Pressure lbs. hrs.
Oil bbls., 1st 24 hrs.
Fresh water feet feet
Salt water feet feet

Casing and Tubing	Used in Drilling	Left in Well	Packers
Size			Kind of Packer
16			
13			
10			Size of
8 5/8	470	470	<u>all</u>
6 7/8	1470	1470	Depth set <u>97 left</u>
5 3/16			
3			Perf. top
2	1725	1725	Perf. bottom
Liners Used			Perf. top
			Perf. bottom

CASING CEMENTED SIZE No. Ft. Date

COAL WAS ENCOUNTERED AT FEET INCHES
 FEET INCHES FEET INCHES
 FEET INCHES FEET INCHES

Formation	Color	Hard or Soft	Top	Bottom	Oil, Gas or Water	Depth Found	Remarks
Salt Sand			770	1245			
Maxon Sand			1355	1410			
Big Lime		1460	1610				
Big Injun		1610	1650				
Squaw Sand			1705	1725			
Gas			1708				
Oil			1710				
Total Depth				1725			
shot record							
9/29/12			1708-1723				
11/25/13			1708-1722				
8/23/20			1709 1721				
9/7/26			1707				