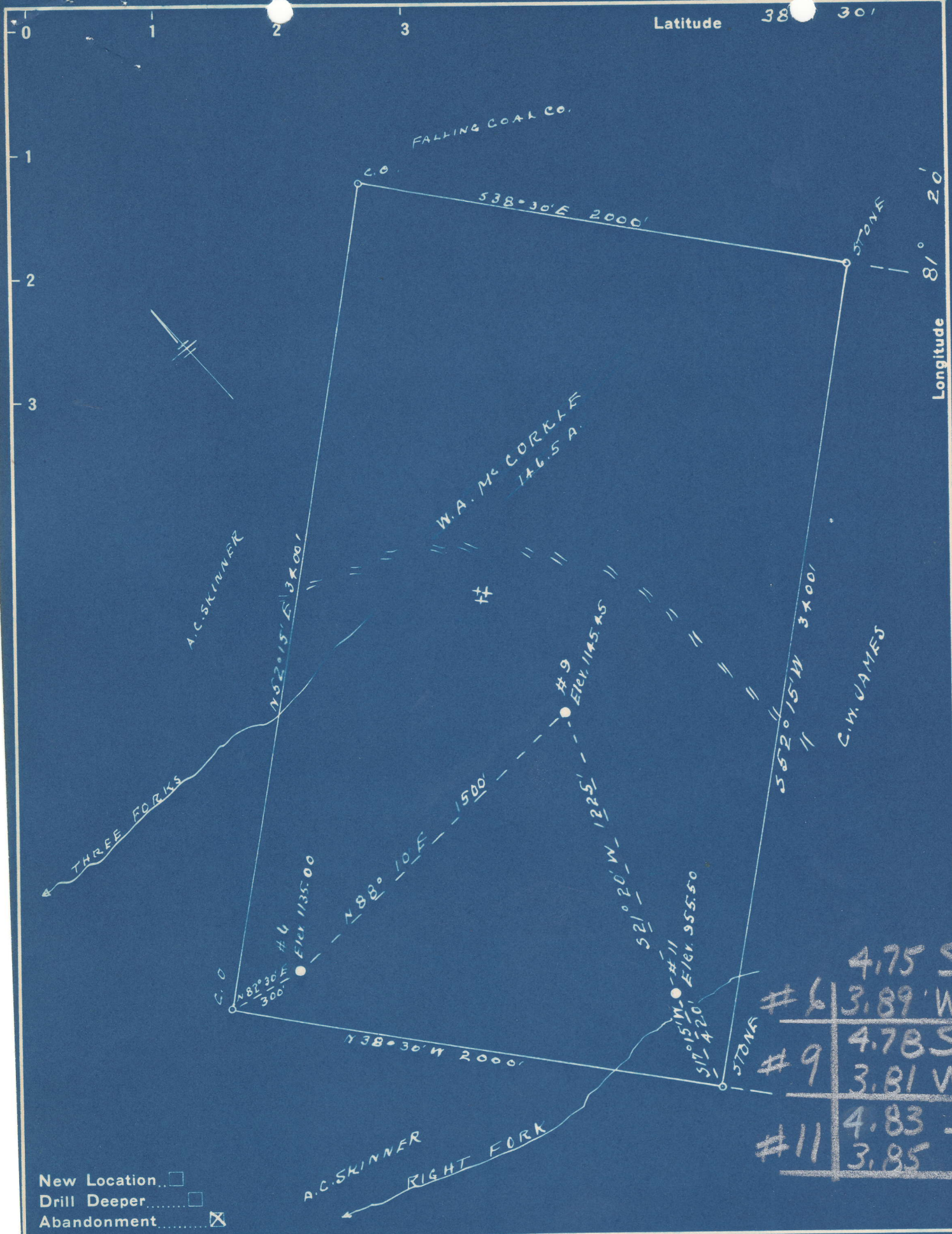


Latitude 38° 30'



4.75 S
#6 3.89 W
4.78 S
#9 3.81 W
4.83 S
#11 3.85 W

New Location...
 Drill Deeper...
 Abandonment...

Company OKMULGEE SUPPLY CORP.
 Address OKMULGEE, O.KLA.
 Farm W.A. McCORKLE
 Tract _____ Acres 146.5 Lease No. _____
 Well (Farm) No. 54-3-11 Serial No. _____ **NG**
 Elevation (Spirit Level) SEE ABOVE
 Quadrangle CLENDENNIN
 County KANAWHA District ELK
 Engineer R.F. Dyer
 Engineer's Registration No. 804
 File No. _____ Drawing No. _____
 Date 5-2-49 Scale 1" = 500'

STATE OF WEST VIRGINIA
 DEPARTMENT OF MINES
 OIL AND GAS DIVISION
 CHARLESTON

WELL LOCATION MAP
 KAN-583-A-#6
 FILE NO. KAN-584-A-#9
 KAN-585-A-#11

+ Denotes location of well on United States Topographic Maps, scale 1 to 62,500, latitude and longitude lines being represented by border lines as shown.
 - Denotes one inch spaces on border line of original tracing.

60 218

W. A. MacCORKLE NO. 9 WELL.

584A

Elk District, Kanawha County, W. Va.
By Okmulgee Supply Corp., Okmulgee, Okla.
Abandoned under permit Kan-.....-A?
On.....acres.

Elevation, ' L.

Completed in 1916.

Shot Sept. 21, 1916, at 2206-2211'; Dec. 14, 1916, at 2206-2216';
July 25, 1917, at 2206-2216'; Oct. 2, 1918, at 2206-2216'; and
Sept. 3, 1920, at 2198'.

7" O. D. casing, 1824'.

Oil well. Record to Dept. of Mines stamped Jan. 19, 1949.

Record to RCT from Mrs. Griffith September 14, 1949. Old File No. 1400.

	Top.	Bottom.
Salt Sand	1090	- 1570
Big Lime (gas, 1920')	1808	- 1970
Weir Sand (gas, 2083') (oil, 2195 and 2216')	2010	- 2216
Total depth		2218



STATE OF WEST VIRGINIA
DEPARTMENT OF MINES
OIL AND GAS DIVISION

1400

WELL RECORD

Permit No. 584/A

Oil or Gas Well X (KIND)

Company OKMULGEE SUPPLY CORPORATION
 Address OKMULGEE, OKLA.
 Farm W. A. MCCORKLE Acres _____
 Location (waters) _____
 Well No. 9 Elev. _____
 District ELK County KANAWHA
 The surface of tract is owned in fee by _____
 Address _____
 Mineral rights are owned by _____
 Address _____
 Drilling commenced _____
 Drilling completed 1916
 Date Shot _____ From _____ To _____
 With _____
 Open Flow _____ /10ths Water in _____ Inch
 _____ /10ths Merc. in _____ Inch
 Volume _____ Cu. Ft.
 Rock Pressure _____ lbs. _____ hrs.
 Oil _____ bbls., 1st 24 hrs.
 Fresh water _____ feet _____ feet
 Salt water _____ feet _____ feet

Casing and Tubing	Used in Drilling	Left in Well	Packers
Size			
16			Kind of Packer
13			
10			Size of
8 1/4			
6 5/8 7" OD	1824	1824	Depth set
5 3/16			
3			Perf. top
2			Perf. bottom
Liners Used			Perf. top
			Perf. bottom

CASING CEMENTED _____ SIZE _____ No. Ft. _____ Date _____
 COAL WAS ENCOUNTERED AT _____ FEET _____ INCHES
 _____ FEET _____ INCHES FEET _____ INCHES
 _____ FEET _____ INCHES FEET _____ INCHES

Formation	Color	Hard or Soft	Top	Bottom	Oil, Gas or Water	Depth Found	Remarks
Salt Sand			1090	1670			
Big Lime			1808	1970			
Gas			1920				
Weir Sand			2010	2216			
Gas			2083				
Oil			2195				
Oil			2216				
Total Depth				2218'			
SHOT RECORD			TOP	BOTTOM			
9/21/16			2206	2211			
12/14/16			2206	2216			
7/25/17			2206	2216			
10/2/18			2206	2216			
9/3/20			2195				

