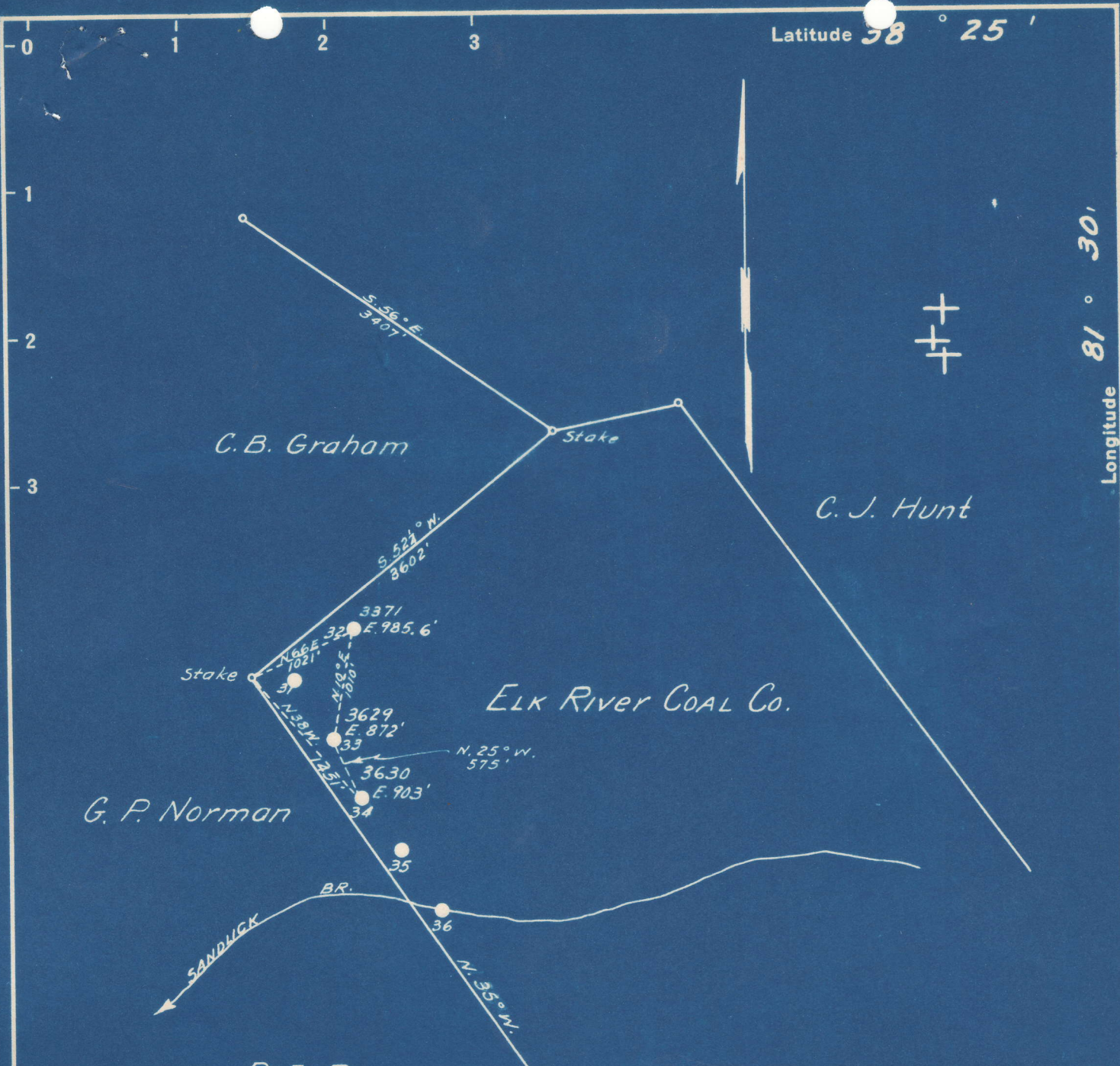


Latitude  $38^{\circ} 25'$

Longitude  $81^{\circ} 30'$



760-A	S	2.34
#34	W	1.20
764-A	S	2.01
#32	W	1.20
765-A	S	2.23
#33	W	1.27

COAL NOT OPERATED

- New Location
- Drill Deeper
- Abandonment

Company KREBS OIL CO., INC  
 Address CHAS. NATIONAL BANK BLDG.  
 Farm ELK RIVER COAL CO. CHAS. W. VA  
 Tract \_\_\_\_\_ Acres 1576 Lease No. 27466  
 Well (Farm) No. 32-33-34 Serial No. 3371  
 Elevation (Spirit Level) AS ABOVE 3629  
 Quadrangle CHARLESTON  
 County KANAWHA District ELK  
 Engineer E. G. Krebs **EC**  
 Engineer's Registration No. 773  
 File No. \_\_\_\_\_ Drawing No. \_\_\_\_\_  
 Date 8-23-50 Scale 1" = 1320'

STATE OF WEST VIRGINIA  
 DEPARTMENT OF MINES  
 OIL AND GAS DIVISION  
 CHARLESTON

**WELL LOCATION MAP**  
 FILE NO. KAN-760-A-#34  
KAN-765-A-#33 KAN-764-A-#32

+ Denotes location of well on United States Topographic Maps, scale 1 to 62,500, latitude and longitude lines being represented by border lines as shown.

- Denotes one inch spaces on border line of original tracing.

6-6 218

ELK RIVER COAL CO. NO. 34 WELL.

760A

Elk District, Kanawha County, W. Va.  
 By Krebs Oil Co., Box 213, Charleston, W. Va.  
 Abandoned under permit Kan-.....-A?  
 On 1576 acres, on Blue Creek.  
 Elevation, .....' L.  
 Surface owned by United Fuel Gas Co., Charleston, W. Va., and minerals  
 by Preston Oil Co., Charleston, W. Va.  
 Drilling commenced Nov. 11, 1920; completed Jan. 6, 1921.  
 Shot Jan. 10, 1921, with 100 qts.  
 Oil, 4 to 5 bbls., estimated.  
 8" casing, 420' (pulled); 6", 1926'.  
 Oil well. Record to Dept. of Mines stamped Aug. 29, 1950.  
 Record to RCT from Mrs. Griffith Nov. 18, 1950. Old File No. 1488.

	Top.	Bottom.
Red rock	0	60
Slate and shells	60	250
Sand	250	300
Slate and shells	300	360
Sand	360	440
Slate and shells	440	665
Sand	665	700
Slate and shells	700	790
Sand	790	820
Slate	820	880
Sand	880	910
Slate	910	930
Salt Sand	930	1500
Slate	1500	1515
Sand	1515	1615
Slate	1615	1620
Sand	1620	1630
Little Lime	1630	1665
Slate	1665	1670
Lime shell	1670	1678
Pencil Cave	1678	1681
Big Lime	1681	1880
Sand	1880	1930
Slate	1930	2052
Weir Sand (green oil, 2067-2072'; yellow oil, 2095-2102')	2052	2145
Total depth		2149



STATE OF WEST VIRGINIA  
DEPARTMENT OF MINES  
OIL AND GAS DIVISION

1488

KAN-760-A

WELL RECORD

Permit No. \_\_\_\_\_ Oil or Gas Well \_\_\_\_\_ (KIND)

Company Krebs Oil Company  
 Address Box 213 - Charleston, W. Va.  
 Farm Elk River Coal Co. Acres 1576  
 Location (waters) Blue Creek  
 Well No. 34 Elev. \_\_\_\_\_  
 District Elk County Kanawha  
 The surface of tract is owned in fee by United Fuel Gas Company Address Charleston, W. Va.  
 Mineral rights are owned by Preston Oil Co. Address Charleston, W. Va.  
 Drilling commenced November 11, 1920  
 Drilling completed January 6, 1921  
 Date Shot 1/10/21 From \_\_\_\_\_ To \_\_\_\_\_  
 With 100 Qts.  
 Open Flow /10ths Water in \_\_\_\_\_ Inch  
 /10ths Merc. in \_\_\_\_\_ Inch  
 Volume 4-5 Bbls. Estimated Cu. Ft.  
 Rock Pressure \_\_\_\_\_ lbs. \_\_\_\_\_ hrs.  
 Oil \_\_\_\_\_ bbls., 1st 24 hrs.  
 Fresh water \_\_\_\_\_ feet \_\_\_\_\_ feet  
 Salt water \_\_\_\_\_ feet \_\_\_\_\_ feet

Casing and Tubing	Used in Drilling	Left in Well	Packers
Size			Kind of Packer
16			
13			
10			Size of
8 1/4	420'	--	
6 5/8	1926'	1926'	Depth set.
5 3/16			
3			Perf. top
2			Perf. bottom
Liners Used			Perf. top
			Perf. bottom

CASING CEMENTED \_\_\_\_\_ SIZE \_\_\_\_\_ No. Ft. \_\_\_\_\_ Date \_\_\_\_\_  
 COAL WAS ENCOUNTERED AT \_\_\_\_\_ FEET \_\_\_\_\_ INCHES  
 \_\_\_\_\_ FEET \_\_\_\_\_ INCHES FEET \_\_\_\_\_ INCHES  
 \_\_\_\_\_ FEET \_\_\_\_\_ INCHES FEET \_\_\_\_\_ INCHES

Formation	Color	Hard or Soft	Top	Bottom	Oil, Gas or Water	Depth Found	Remarks
Red Rock				60			
Slate and Shells			60	250			
Sand			250	300			
Slate and Shells			300	360			
Sand			360	440			
Slate and Shells			440	665			
Sand			665	700			
Slate and Shells			700	790			
Sand			790	820			
Slate			820	880			
Sand			880	910			
Slate			910	930			
Salt Sand			930	1500			
Slate			1500	1515			
Sand			1515	1615			
Slate			1615	1620			
Sand			1620	1630			
Little Lime			1630	1665			
Slate			1665	1670			
Lime Shell			1670	1678			
Pencil Cave			1678	1681			
Big Lime			1681	1880			
Sand			1880	1930			
Slate			1930	2052			
Weir Sand			2052	2145			
Total Depth				2149'			
Green Oil	2067-	2072					
Yellow "	2095-	2102					

