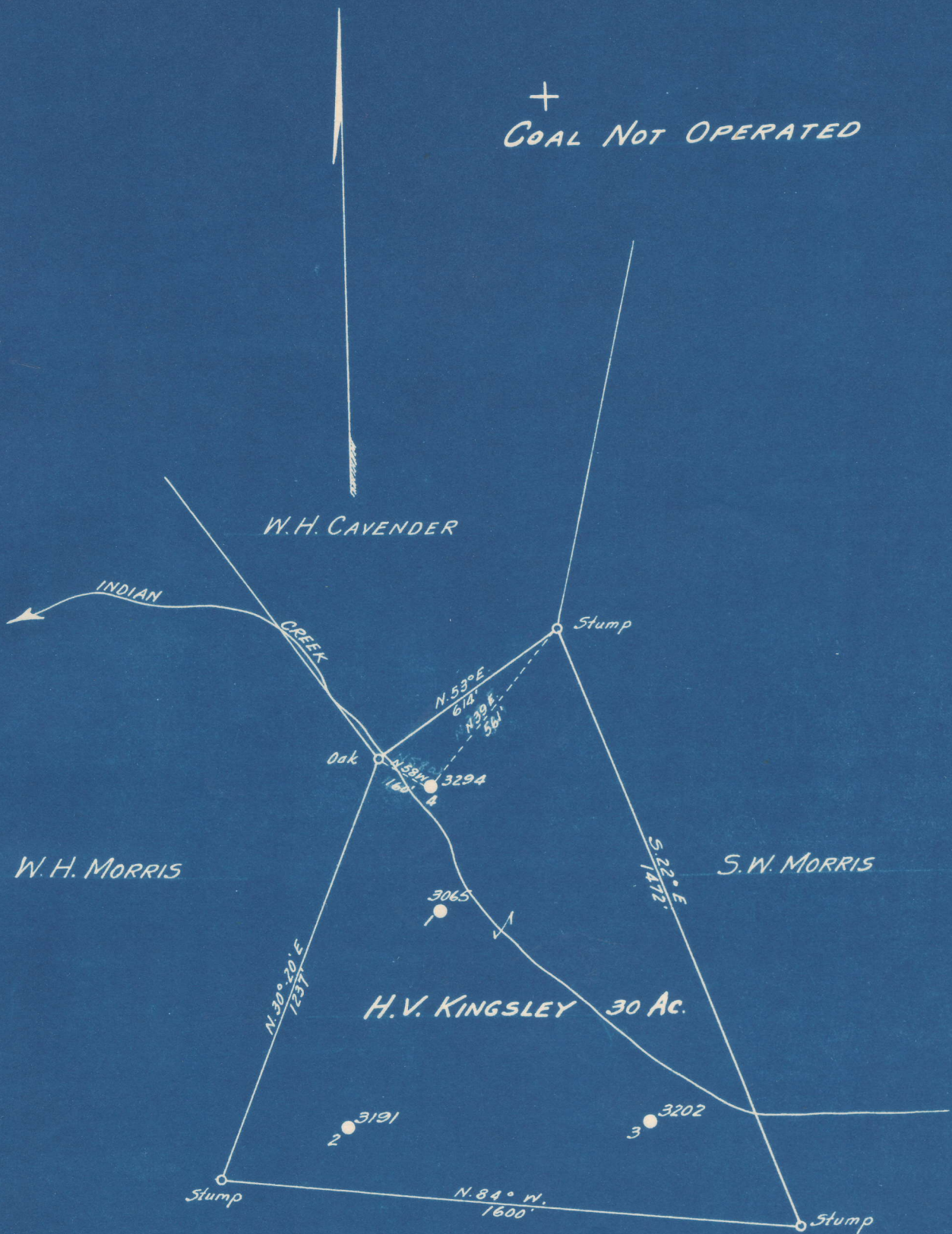


Latitude 38° 25'

Longitude 81° 25'

+
COAL NOT OPERATED



New Location...
 Drill Deeper.....
 Abandonment.....

NUMA COAL CO.

S 1.37
 W 3.27

Company KREBS OIL CO., INC.
 Address CHAS NAT. BANK BLDG.,
 Farm H.V. KINGSLEY CHAS, W.VA
 Tract _____ Acres 30 Lease No. 893
 Well (Farm) No. 4 Serial No. 3294
 Elevation (Spirit Level) 918
 Quadrangle CLENDENIN WC
 County KANAWHA District ELK
 Engineer W.J. Krebs
 Engineer's Registration No. 773
 File No. _____ Drawing No. _____
 Date 9-6-50 Scale 1" - 400'

STATE OF WEST VIRGINIA
 DEPARTMENT OF MINES
 OIL AND GAS DIVISION
 CHARLESTON

WELL LOCATION MAP
 FILE NO. KAN-774-A

+ Denotes location of well on United States Topographic Maps, scale 1 to 62,500, latitude and longitude lines being represented by border lines as shown.

- Denotes one inch spaces on border line of original tracing.

6-0-217

H. V. KINGSLEY NO. 4 WELL.

774A

Elk District, Kanawha County, W. Va.

By Krebs Oil Co., Inc., Box 213, Charleston, W. Va.

Abandoned under permit Kan-.....-A?

On 30 acres, on Blue Creek.

Elevation,' L.

Drilling commenced Sept. 14, 1916; completed Oct. 24, 1916.

8 $\frac{1}{4}$ " casing, 465' (pulled); 6 $\frac{5}{8}$ " , 1460'.

Gas in Big Lime, 1540'. Gas in Injun Sand, 1615'. Gas in Weir, 1720'.

Green oil, 1753'. Oil increased, 1785'. Oil increased, 1822'.

Oil increased, 1848'.

Oil well. Record to Dept. of Mines not dated or stamped.

Record to RCT from Mrs. Griffith June 24, 1951. Old File No. 1544.

	Top.	Bottom.
Clay	0	15
Sand	15	150
Slate	150	180
Lime	180	200
Coal	200	202
Slate	202	270
Sand (hole full water, 320')	270	340
Lime	340	365
Sand	365	380
Black shale	380	427
Lime	427	452
Sand	442	476
Coal	476	479
Black slate	479	493
Slate and shells	493	570
Sand	570	632
Slate and lime	632	700
Sand and slate	700	780
Salt Sand (big water, 875')	780	1245
Red rock	1245	1255
Gritty lime	1255	1341
Red rock	1341	1348
Lime	1348	1359
Slate	1359	1376
Black slate	1376	1400
Little Lime	1400	1440
Break	1440	1450
Big Lime	1450	1610
Big Injun Sand	1610	1630
Slate and shells	1630	1720
Weir Sand	1720	1876
Total depth		1880



15744

STATE OF WEST VIRGINIA
DEPARTMENT OF MINES
OIL AND GAS DIVISION

WELL RECORD

Permit No. AP 774A

Oil or Gas Well ~~X~~

(KIND)

Company Krebs Oil Company, Inc.
Address Box 213 - Charleston, W. Va.
Farm H. V. Kingsley Acres 30
Location (waters) Blue Creek
Well No. 4 Elev. _____
District Elk County Kanawha
The surface of tract is owned in fee by _____
Address _____
Mineral rights are owned by _____
Address _____
Drilling commenced September 14, 1916
Drilling completed October 24, 1916
Date Shot From _____ To _____
With _____
Open Flow /10ths Water in _____ Inch
/10ths Merc. in _____ Inch
Volume _____ Cu. Ft.
Rock Pressure _____ lbs. _____ hrs.
Oil _____ bbls., 1st 24 hrs.
Fresh water _____ feet _____ feet
Salt water _____ feet _____ feet

Casing and Tubing	Used in Drilling	Left in Well	Packers
Size			Kind of Packer
16			
13			
10			Size of
8 1/4	405'		Depth set
6 1/2	1400'	1400'	
5 3/16			Perf. top
3			Perf. bottom
2			Perf. top
Liners Used			Perf. bottom

CASING CEMENTED _____ SIZE _____ No. Ft. _____ Date _____
COAL WAS ENCOUNTERED AT _____ FEET _____ INCHES
_____ FEET _____ INCHES _____ FEET _____ INCHES
_____ FEET _____ INCHES _____ FEET _____ INCHES

Formation	Color	Hard or Soft	Top	Bottom	Oil, Gas or Water	Depth Found	Remarks
Clay			0	15			
Sand			15	150			
Slate			150	180			
Lime			180	200			
Coal			200	202			
Slate			202	270			
Sand			270	340			Hole full water 320'
Lime			340	365			
Sand			365	380			
Black Shale			380	427			
Lime			427	442			
Sand			442	476			
Coal			476	479			
Black Slate			479	493			
Slate & shells			493	570			
Sand			570	632			
Slate & Lime			632	700			
Sand & Slate			700	780			
Salt Sand			780	1245			Big Water 875'
Red Rock			1245	1255			
Gritty Lime			1255	1341			
Red Rock			1341	1348			
Lime			1348	1359			
Slate			1359	1376			
Black Slate			1376	1400			
Little Lime			1400	1440			
Break			1440	1450			
Big Lime			1450	1610			Gas in Big Lime 1540'
Big Injun			1610	1630			Gas in Injun Sand 1615'
Slate & shells			1630	1720			Gas in Weir 1720'
Weir Sand			1720	1876'			Green Oil 1753'
							Oil increased 1785'
							Oil increased 1822'
							Oil increased 1848'
Total Depth				1880'			

(Over)

JUN 24 1951