

New Location
 Drill Deeper
 Abandonment

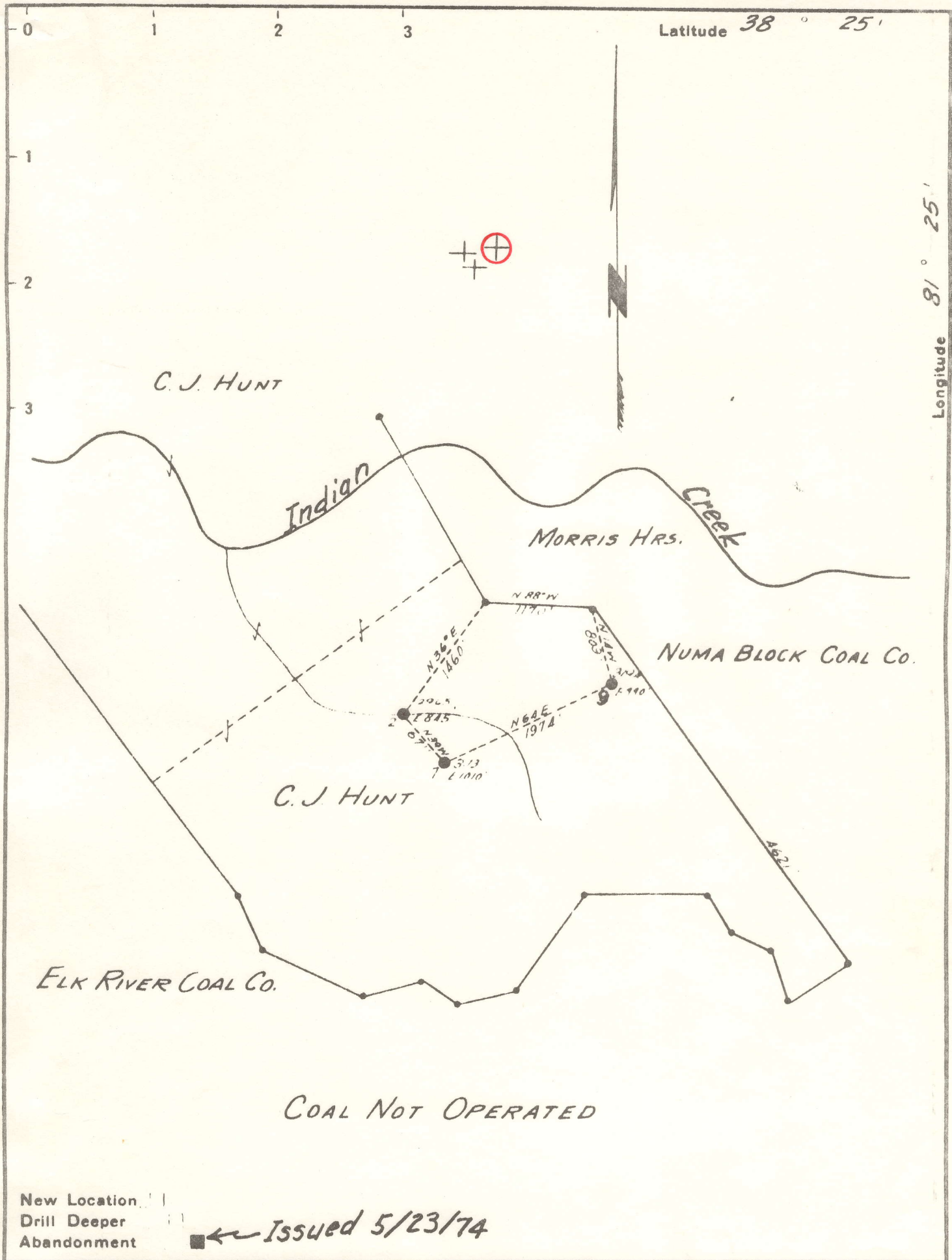
Company KREBS OIL CO., INC.
 Address CHAS NAT. BANK BLDG.
 Farm C. J. HUNT CHAS. W. VA.
 Tract _____ Acres 929 Lease No. 27480
 Well (Farm) No. 2-7-9 Serial No. 2965
 Elevation (Spirit Level) AS ABOVE 3113
 Quadrangle CLENDENIN WC
 County KANAWHA District ELK
 Engineer T. J. Krebs
 Engineer's Registration No. 773
 File No. _____ Drawing No. _____
 Date 9-21-50 Scale 1" = 1320'

STATE OF WEST VIRGINIA
 DEPARTMENT OF MINES
 OIL AND GAS DIVISION
 CHARLESTON

WELL LOCATION MAP
 FILE NO. KAN-776-A-#7
KAN-777-A-#2
KAN-778-A-#9

+ Denotes location of well on United States Topographic Maps, scale 1 to 62,500, latitude and longitude lines being represented by border lines as shown.

- Denotes one inch spaces on border line of original tracing.



Company W.D. FRAME
~~KREBS OIL CO. INC.~~
 Address P.O. Box 263, ELKY, W. Va.
~~CHAS. NAT. BANK BLDG.~~
 Farm C. J. HUNT ~~CHAS. NAT.~~
 Tract _____ Acres 929 Lease No. 27480
 Well (Farm) No. ~~773~~ Serial No. ~~3194~~
990
 Elevation (Spirit Level) ~~3194~~
 Quadrangle CLENDENIN WC
 County KANAWHA District ELK
 Engineer T. J. Krebs
 Engineer's Registration No. 773
 File No. _____ Drawing No. _____
 Date 9-21-50 Scale 1" = 1320'

STATE OF WEST VIRGINIA
 DEPARTMENT OF MINES
 OIL AND GAS DIVISION
 CHARLESTON

WELL LOCATION MAP
 FILE NO. ~~KAN 778-A-9~~
~~KAN 778-A-7~~
KAN-778-A-#9

+ Denotes location of well on United States Topographic Maps, scale 1 to 62,500, latitude and longitude lines being represented by border lines as shown.

- Denotes one inch spaces on border line of original tracing.

47-039 JUN 21 1974