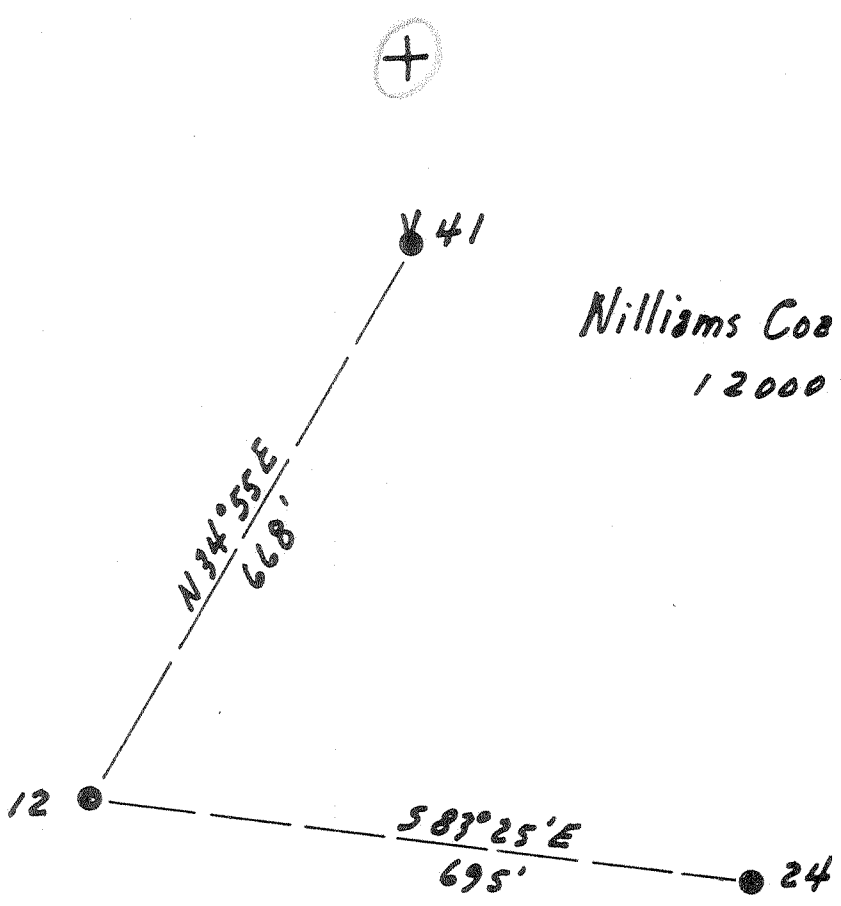


Latitude 38° 10'

Longitude 81° 25'



Williams Coal Co.
12000 ac

New Location
 Drill Deeper
 Abandonment

4.1 W
 3.2 Q

Company The Pure Oil Co.
 Address Newark, Ohio Box 551
 Farm Williams Coal Co.
 Tract _____ Acres 12000 Lease No. 5012
 Well (Farm) No. 12 Serial No. 338
 Elevation (Spirit Level) 1609
 Quadrangle Montgomery
 County Kanawha District Cabin Creek
 Engineer J. B. Hunter
 Engineer's Registration No. Ohio-2912
 File No. _____ Drawing No. _____
 Date 4-30-51 Scale 1" = 200'

STATE OF WEST VIRGINIA
 DEPARTMENT OF MINES
 OIL AND GAS DIVISION
 CHARLESTON

WELL LOCATION MAP
 FILE NO. KAN-837-A

+ Denotes location of well on United States Topographic Maps, scale 1 to 62,500, latitude and longitude lines being represented by border lines as shown.

- Denotes one inch spaces on border line of original tracing.

8-0 240

"IMPERIAL" TRACING CLOTH
 K & E CO., N. Y.

WILLIAMS COAL Co., 12 - THE PURE OIL Co., - KAN-837-A

837A

Cabin Creek District, Kanawha County, W. Va.
 By The Pure Oil Co., Box 551, Newark, Ohio.
 Abandoned under permit Kan-.....-A?
 On 12,000 acres.
 Elevation, 1609' L.
 Surface and minerals owned by Shonk Land Co., 802 Kanawha Banking & Trust Co. Bldg., Charleston, W. Va.
 Drilling commenced Oct. 11, 1915; completed Jan. 1, 1916.
 Shot Jan. 4, 1916, at 3251-3274', with 60 qts.
 Oil, 179 bbls., 1st 24 hrs.
 Fresh water at 90 and 180'.
 Salt water at 1590 and 1760'.
 10³/₄" casing, 1067'; 6⁵/₈" 2595'; 3" tubing, 3242'; all left in.
 3" tubing cemented; top of cement calculated at 2900'.
 Coal was encountered at 400-404, 425-430, 850-853, 875-878, 1038-1042, 1350-1354, and 1595-1596'.

NOW WATER INJECTION WELL. Record to Dept. of Mines dated May 10, 1951.
 Record to RCT from Mrs. Griffith Jan. 16, 1952. Old File No. 1631.

NOTE: Casing-head lowered 3' in 1947. All measurements should be made from a point 3' above casing-head.

	Top.	Bottom.
Conductor	0	16
Sand	16	60
Slate	60	65
Sand (water, 90', $\frac{1}{2}$ bailer per hour)	65	95
Slate	95	100
Sand	100	130
Slate	130	145
Sand (water, 180', 2 bailers per hour)	145	205
Slate	205	220
Sand	220	280
Slate	280	290
Sand	290	400
Coal	400	404
Sand	404	420
Slate	420	425
Rock Bottom Coal	425	430
Slate	430	435
Sand	435	445
Slate	445	470
Sand	470	480
Slate and shells	480	600
Sand	600	800
Slate and shells	800	850
Coal	850	853
Black slate	853	875
Coal	875	878
Slate and shells	878	945
Slate	945	970
Sand	970	1038
Coal	1038	1042
Hard slate	1042	1054
Black slate	1054	1074
Sand	1074	1120
Black slate	1120	1220
Sand	1220	1300
Black slate	1300	1350
Coal	1350	1354

WILLIAMS COAL CO. NO. 12 WREIL (Continued).

	Top.	Bottom.
Slate and shells	1354	- 1365
Sand	1365	- 1480
Crampus Sand (water, 1590')	1480	- 1595
Little coal	1595	- 1596
Slate and shells	1596	- 1650
Sand	1650	- 1740
Black shale	1740	- 1743
Salt Sand (water, 1760')	1743	- 1870
Black slate	1870	- 1875
White slate	1875	- 1950
White shale	1950	- 2000
Lime and Pencil Cave	2000	- 2070
Red rock	2070	- 2110
Shells	2110	- 2280
Lime	2280	- 2310
Sand	2310	- 2325
Slate and shells	2325	- 2480
Little Lime	2480	- 2515
Lime	2515	- 2530
Big Lime	2530	- 2800
Big Injun Sand	2800	- 2838
Slate and shells	2838	- 3190
Blue lime	3190	- 3210
Brown slate	3210	- 3233
Berea Sand	3233	- 3274
Slate	3274	- 3282
Total depth		3282



STATE OF WEST VIRGINIA
DEPARTMENT OF MINES
OIL AND GAS DIVISION

1631

WELL RECORD

Permit No. KAN-837-A

Oil or Gas Well Water Injection
(KIND)

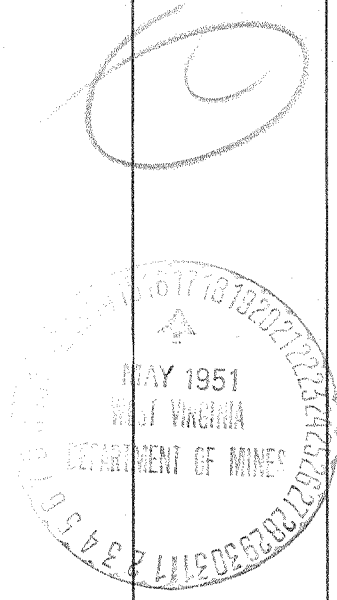
Company The Pure Oil Company
 Address P.O. Box 551, Newark, Ohio
 Farm Williams Coal Co. Acres 12,000
 Location (waters) _____
 Well No. 12 Elev. 1609
 District Cabin Creek County Kanawha
 The surface of tract is owned in fee by Shonk Land Co.
802 Kanawha Banking & Trust Co. Bldg.
Charleston, W. Va. Address _____
 Mineral rights are owned by Same as above
 Address _____
 Drilling commenced October 11, 1915
 Drilling completed January 1, 1916
 Date Shot 1/4/16 From 3251' To 3274'
 With 60 Qts.
 Open Flow _____ /10ths Water in _____ Inch
 _____ /10ths Merc. in _____ Inch
 Volume _____ Cu. Ft.
 Rock Pressure _____ lbs. _____ hrs.
 Oil 179 bbls., 1st 24 hrs.
 Fresh water 90' feet 180' feet
 Salt water 1590' feet 1760' feet

Casing and Tubing	Used in Drilling	Left in Well	Packers
Size			
16			Kind of Packer _____
13			
10 3/4"	1067'	1067'	Size of _____
8 1/4"			
6 5/8"	2595'	2595'	Depth set _____
5 3/16"			
3"		3242'	Perf. top _____
2"			Perf. bottom _____
Liners Used			Perf. top _____
			Perf. bottom _____

3" tubing cemented-top of cement calculated at
CASING CEMENTED _____ SIZE _____ No. Ft. 2900' Date _____

COAL WAS ENCOUNTERED AT 400 FEET 48 INCHES
425 FEET 60 INCHES 850 FEET 36 INCHES
875 FEET 36 INCHES 1038 FEET 48 INCHES
1350' 48" 1595' 12"

Formation	Color	Hard or Soft	Top	Bottom	Oil, Gas or Water	Depth Found	Remarks
Note: Casinghead lowered 3' in 1947 - All measurements should be made from a point 3' above casinghead.							
Conductor			0	16			
Sand			16	60			
Slate			60	65			
Sand			65	95	Water	90	1/2 Bailer per hr.
Slate			95	100			
Sand			100	130			
Slate			130	14 5			
Sand			145	205	Water	180	2 Bailleurs per hr.
Slate			205	220			
Sand			220	280			
Slate			280	290			
Sand			290	400			
Coal			400	404			
Sand			404	420			
Slate			420	425			
Rock Bottom Coal			425	430			
Slate			430	435			
Sand			435	445			
Slate			445	470			
Sand			470	480			
Slate & Shells			480	600			
Sand			600	800			
Slate & Shells			800	850			
Coal			850	853			
Black Slate			853	875			
Coal			875	878			
Slate & Shells			878	945			
Slate			945	970			
Sand			970	1038			
Coal			1038	1042			
Hard Slate			1042	1054			
Black Slate			1054	1074			
Sand			1074	1120			
Black Slate			1120	1220			
Sand			1220	1300			
Black Slate			1300	1350			
Coal			1350	1354			



(Over) JAN 16 1952

Formation	Color	Hard or Soft	Top	Bottom	Oil, Gas or Water	Depth Found	Remarks
Slate & Shells			1354	1365			
Sand			1365	1480			
Grampus			1480	1595	Water	1590	
Little Coal			1595	1596			
Slate & Shells			1596	1650			
Sand			1650	1740			
Black Shale			1740	1743			
SALT SAND			1743	1870	Water	1760	
Black Slate			1870	1875			
White Slate			1875	1950			
White Shale			1950	2000			
Line & Pencil cave			2000	2070			
Red Rock			2070	2110			
Shells			2110	2280			
Lime			2280	2310			
Sand			2310	2325			
Slate & Shells			2325	2480			
Little Lime			2480	2515			
Lime			2515	2530			
BIG LIME			2530	2800			
BIG INJUN			2800	2838			
Slate & Shells			2838	3190			
Blue Lime			3190	3210			
Brown Slate			3210	3233			
BEREA SAND			3233	3274			
Slate			3274	3282			
TOTAL DEPTH				3282			

Date May 10, 1951

APPROVED THE PURE OIL COMPANY, Owner

By [Signature]
Division Superintendent.