

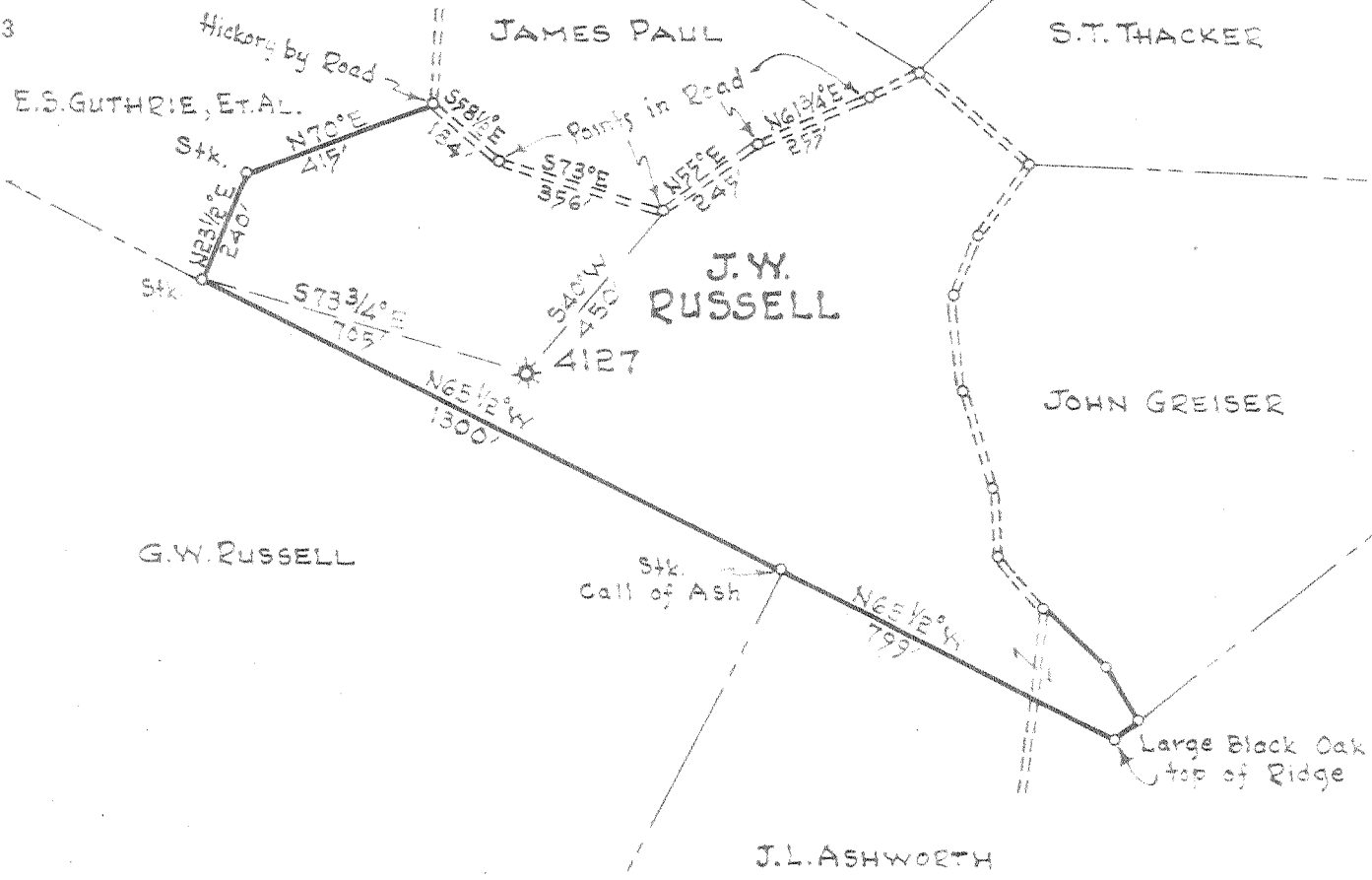
1

2

3

Latitude 3 25

Longitude 81 50



New Location
 Drill Deeper
 Abandonment

(1951)

FEB 1 1953

3.27 W
1.8 Q

Company UNITED FUEL GAS CO.
 Address CHARLESTON, W.VA.
 Farm J.W. RUSSELL
 Tract _____ Acres 53 Lease No. 30310
 Well (Farm) No. — Serial No. 4127
 Elevation (Spirit Level) 925 PROJECTED
 Quadrangle SAINT ALBANS
 County KANAWHA District JEFFERSON
 Engineer [Signature]
 Engineer's Registration No. 669
 File No. 46-61 Drawing No. _____
 Date OCT. 16, 1951 Scale 1"=400'

STATE OF WEST VIRGINIA
 DEPARTMENT OF MINES
 OIL AND GAS DIVISION
 CHARLESTON

WELL LOCATION MAP
 FILE NO. KAN-911-*

+ Denotes location of well on United States Topographic Maps, scale 1 to 62,500, latitude and longitude lines being represented by border lines as shown.

- Denotes one inch spaces on border line of original tracing.

J.W. RUSSELL TO A 127 -

U. F. G. Co. -

KAN-911-A