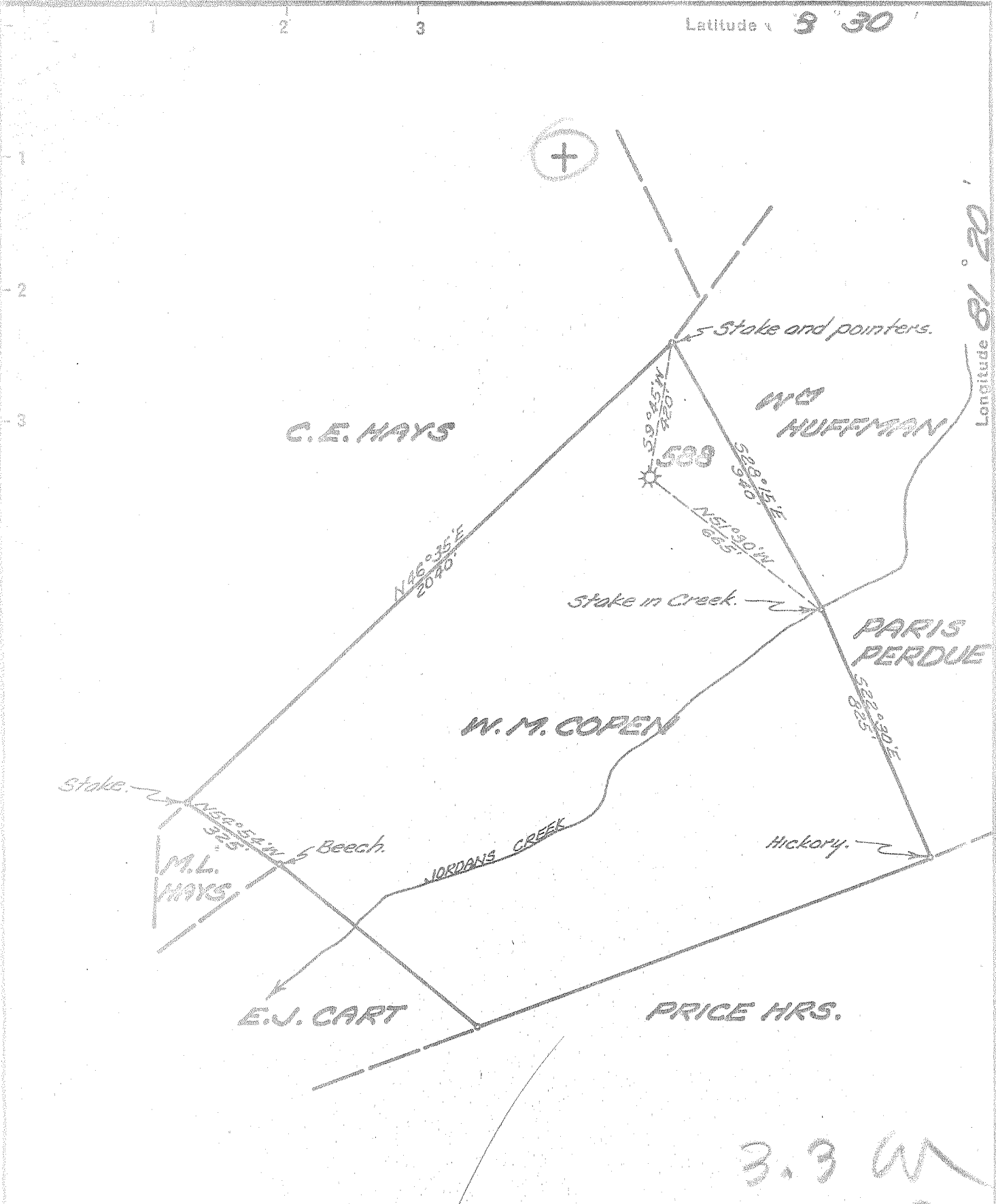


Latitude 38° 30'

Longitude 81° 20'



New Location
 Drill Deeper
 Abandonment

OCT 6 1954
~~OCT 3 1954~~

3.3 W
 118 Q

Company UNITED FUEL GAS CO.
 Address CHARLESTON W. VA.
 Farm W. M. COPEN
 Tract _____ Acres 40 Lease No. 547
 Well (Farm) No. _____ Serial No. 588
 Elevation (Spirit Level) 799'
 Quadrangle CLENDENIN
 County WARRIOR District BIG SANDY
 Engineer Prof. J. J. Jordan
 Engineer's Registration No. 669
 File No. 74-67 Drawing No. _____
 Date 9-20-54 Scale 1" = 400'

STATE OF WEST VIRGINIA
 DEPARTMENT OF MINES
 OIL AND GAS DIVISION
 CHARLESTON

WELL LOCATION MAP
 FILE NO. KAN-1078-A

+ Denotes location of well on United States Topographic Maps, scale 1 to 62,500, latitude and longitude lines being represented by border lines as shown.

- Denotes one inch spaces on border line of original tracing.

W. M. COPEN No. 588 - U. F. G. Co. - KAN-1078-A



STATE OF WEST VIRGINIA
DEPARTMENT OF MINES
OIL AND GAS DIVISION

1783

WELL RECORD

Oil or Gas Well Gas
(KIND)

Quadrangle Clemerin

Permit No. 1078-A

Company UNITED FUEL GAS CO.
Address P.O. Box 1273, Charleston 25, W. Va.
Farm W. M. Copen Acres 40
Location (waters) Jordan Creek
Well No. 588 Elev. 799.0'
District Big Sandy County Kanawha

The surface of tract is owned in fee by _____
Address _____

Mineral rights are owned by Fanny W. Field
2436 Kanawha Blvd. E. Address Charleston, W. Va.

Drilling commenced 10-25-13

Drilling completed 12-10-13

Date Shot 8-23-27 From _____ To _____

With 20 cts.

Open Flow 6 /10ths Water in 6-5/8 Inch

_____ /10ths Merc. in _____ Inch

Volume 1,510,860 Cu. Ft.

Rock Pressure 420 lbs. _____ hrs.

Oil _____ bbls., 1st 24 hrs.

Fresh water _____ feet _____ feet

Salt water 1050 feet _____ feet

| Casing and Tubing | Used in Drilling | Left in Well | Packers |
|-------------------|------------------|--------------|-------------------|
| Size | | | |
| 16 | | | Kind of Packer |
| 13 | | | <u>Anchor</u> |
| 10 | | | Size of |
| 8 1/4 | <u>610'</u> | <u>239'</u> | <u>2x6-5/8x20</u> |
| 6 5/8 | | <u>1585'</u> | Depth set |
| 5 3/16 | | | |
| 3 | | <u>1779'</u> | Perf. top |
| 2 | | | Perf. bottom |
| Liners Used | | | Perf. top |
| | | | Perf. bottom |

CASING CEMENTED _____ SIZE _____ No. Ft. _____ Date _____

COAL WAS ENCOUNTERED AT _____ FEET _____ INCHES

_____ FEET _____ INCHES _____ FEET _____ INCHES

_____ FEET _____ INCHES _____ FEET _____ INCHES

| Formation | Color | Hard or Soft | Top | Bottom | Oil, Gas or Water | Depth Found | Remarks |
|----------------|-------|--------------|-------|--------|---------------------------|-------------|---------|
| Clay | | | | 15 | | | |
| Sand | | | 15 | 200 | | | |
| Slate | | | 200 | 225 | | | |
| Sand | | | 225 | 300 | | | |
| Slate | | | 300 | 350 | | | |
| Sand | | | 350 | 450 | | | |
| Slate | | | 450 | 500 | | | |
| Lime | | | 500 | 550 | | | |
| Slate & Shells | | | 550 | 805 | | | |
| Sand | | | 805 | 865 | | | |
| Slate & Shells | | | 865 | 990 | | | |
| Salt Sand | | | 990 | 1360 | <u>Big Water at 1050'</u> | | |
| Slate & Shells | | | 1360 | 1520 | | | |
| Little Lime | | | 1520 | 1548 | | | |
| Pencil Cave | | | 1548 | 1556 | | | |
| Grey Lime | | | 1556 | 1563 | | | |
| Big Lime | | | 1563 | 1695 | | | |
| Injun Sand | | | 1695 | 1725 | <u>Gas 1695' to 1715'</u> | | |
| Slate & Shells | | | 1725 | 1766 | | | |
| Total depth | | | 1766' | | | | |



