

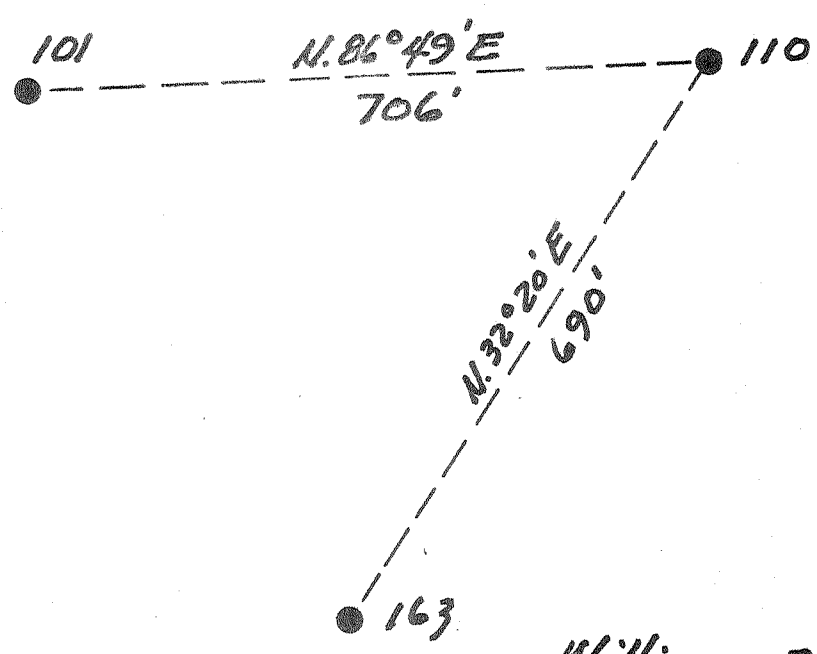
1 2 3

Latitude $38^{\circ} 10'$

1
2
3

Longitude $81^{\circ} 25'$

(+)



Williams Coal Co.
12000 ²⁵

New Location...
Drill Deeper...
Abandonment...

SEP 27 1955

4.6 W
3.85

Company	Pure Oil Co.
Address	Newark, Ohio
Farm	Williams Coal Co.
Tract	Acres 12000 Lease No. 5012
Well (Farm) No.	110 Serial No. 431
Elevation (Spirit Level)	1262
Quadrangle	Montgomery (WV)
County	Kanawha District Cabin Creek
Engineer	J. H. Hines
Engineer's Registration No.	Ohio-2912
File No.	Drawing No.
10-22-53	Scale 1" = 200'

STATE OF WEST VIRGINIA
DEPARTMENT OF MINES
OIL AND GAS DIVISION
CHARLESTON

WELL LOCATION MAP
FILE NO. KAN-1197-A

+ Denotes location of well on United States Topographic Maps, scale 1 to 62,500, latitude and longitude lines being represented by border lines as shown.

- Denotes one inch spaces on border line of original tracing.

8-0 240



STATE OF WEST VIRGINIA
DEPARTMENT OF MINES
OIL AND GAS DIVISION

1903

WELL RECORD

WATER

Oil or Gas Well INJECTION

(KIND)

Permit No. 1197-A

Company The Pure Oil Company
Address Box 551 - Newark, Ohio
Farm Williams Coal Company Acres 12,000
Location (waters) Cabin Creek
Well No. 110 Elev. 1262
District Cabin Creek County Kanawha
The surface of tract is owned in fee by Shonk Land Company
2 Kan. Bnk & Trust Co. Bldg. Address Charleston, W. Va.
Mineral rights are owned by Ditto
Address _____

Drilling commenced March 15, 1918
Drilling completed June 10, 1918
Date Shot 6/12/18 From 2929 To 2941
With 60 qts. glycerine

Open Flow /10ths Water in _____ Inch
/10ths Merc. in _____ Inch

Volume _____ Cu. Ft.

Rock Pressure _____ lbs. _____ hrs.

Oil 19 bbls., 1st 24 hrs.

Fresh water 100' feet _____ feet

Salt water 1440' feet 2005' feet

Casing and Tubing	Used in Drilling	Left in Well	Packers
Size			
16			Kind of Packer
13			
10	755	755	Size of
8 1/4	1615	Pulled	
6 5/8	2247	2247	Depth set
5 3/16			
3		2919	Perf. top
2			Perf. bottom
Liners Used			Perf. top
			Perf. bottom

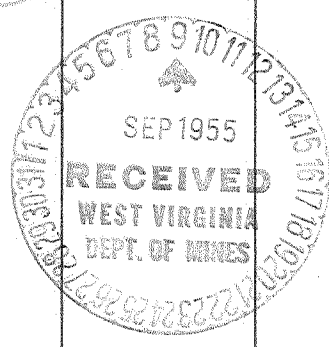
CASING CEMENTED _____ SIZE _____ No. Ft. _____ Date _____

COAL WAS ENCOUNTERED AT 100 FEET 36 INCHES

160 FEET 48 INCHES 700 FEET 36 INCHES

_____ FEET _____ INCHES _____ FEET _____ INCHES

Formation	Color	Hard or Soft	Top	Bottom	Oil, Gas or Water	Depth Found	Remarks
conductor			0	16			
and	white		16	20			
late	black		20	100			
coal	black		100	103	Water	100'	Hole filled up 50'.
late	black		103	160			
coal	black		160	164			
and	white		164	200			
late	black		200	275			
and	white		275	370			
late & Lime	black		370	420			
and	white		420	450			
late & Lime	black		450	630			
and	white		630	655			
late	black		655	665			
and			665	700			
coal	black		700	703			
late	black		703	745			
and	white		745	805			
late & Lime	black		805	900			
and	white		900	960			
late	black		960	1110			
and	white		1110	1150			
late	black		1150	1173			
IG DUNKARD			1173	1260			
late	black		1260	1320			
SALT SAND			1320	1610	S. Water	1440'	Hole filled up 800'
late & Shells	black		1610	1765			
ed Rock			1765	1813			
late & Lime	white		1813	1935			
AXON SAND			1935	2128	S. Water	2005'	Hole filled up 1200'
late & Lime	black		2128	2170			
ittle Lime	black		2170	2235			
encil Cave	black		2235	2240			
IG LIME	white		2240	2477			
IG INJUN	red		2477	2510			
late & Lime	black		2510	2730			



OCT. 26 1956

(Over)

Formation	Color	Hard or Soft	Top	Bottom	Oil, Gas or Water	Depth Found	Remarks
CLAY SAND			2730	2750			
late & Lime	black		2750	2900			
shale	brown		2900	2912			
CLAY SAND			2912	2941	Oil & Gas	2929'	
				2948	<u>TOTAL DEPTH</u>		

Note: Casinghead lowered 3' in 1949. All measurements should be made from a point 3' above same.

Date October 21, 1953

APPROVED THE PURE OIL COMPANY, Owner

By Guy J. Andersen (Title)

Division Superintendent