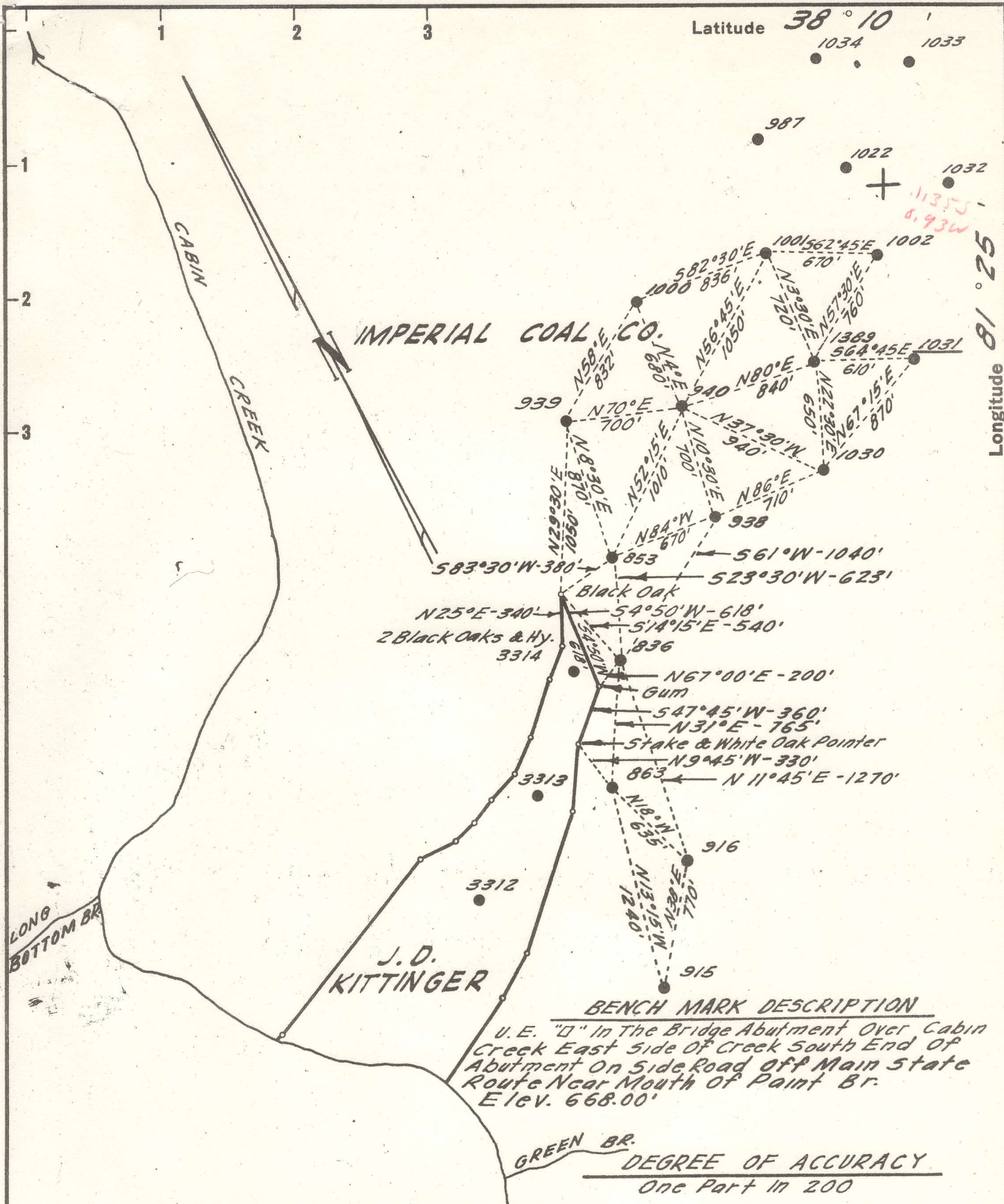


Latitude $38^{\circ} 10'$
1034 1033

Longitude $81^{\circ} 18' 25''$



I, the undersigned, hereby certify that this map is correct to the best of my knowledge and belief and shows all the information required by paragraph 6 of the rules and regulations of the oil and gas section of the mining laws of West Virginia.

Seybert R. Ferrell

New Location
 Drill Deeper
 Abandonment

Company THE PRESTON OIL CO.
 Address CHARLESTON, W. VA.
 Farm IMPERIAL COAL CO.
 Tract _____ Acres 5400 Lease No. 2975
 Well (Farm) No. _____ Serial No. 1031
 Elevation (Spirit Level) 1525.93'
 Quadrangle MONTGOMERY-WC
 County KANAWHA District CABIN CRK
 Engineer Seybert R. Ferrell
 Engineer's Registration No. 2529
 File No. 72-45 Drawing No. _____
 Date SEPT. 17, 1964 Scale 1" = 800

STATE OF WEST VIRGINIA
 DEPARTMENT OF MINES
 OIL AND GAS DIVISION
 CHARLESTON

WELL LOCATION MAP
 FILE NO. Kan-1365-R

+ Denotes location of well on United States Topographic Maps, scale 1 to 62,500, latitude and longitude lines being represented by border lines as shown.

- Denotes one inch spaces on border line of original tracing.

60.240 oil

IMPERIAL COAL CO. NO. 26 (1031) WELL.

1365A

Cabin Creek District, Kanawha County, W. Va.
 By United Fuel Gas Co., Charleston, W. Va.
 On ~~2975~~ lease No. 2975; on 5400 acres.
 Drilling contractor, United Fuel Gas Co. Drilling Dept., Charleston, W. Va.
 Commenced June 12, 1919; completed Nov. 29, 1919.
 Drillers: T. W. Goddard, C. M. Goodwell.
 10" casing, 776'; 8 $\frac{1}{4}$ " 1954'; 6 $\frac{5}{8}$ " 2579'; all left in.
 6 $\frac{5}{8}$ " casing shoe.
 1st perf. set 2579' from top.
 Shot Dec. 1, 1919; 2 - 5" shells, 40 qts.
 Steel-line measurements at 2579, 3234, and 3266'.
 8 $\frac{1}{4}$ " casing not pulled on account of 6 $\frac{5}{8}$ " leaking. Tried to pull 6 $\frac{5}{8}$ "
 but was unable to do so without parting.
 Col well.

	Top.	Bottom.	Thickness.
Clay	0	10	10
Sand	10	100	90
Slate	100	120	20
Sand	120	290	170
Slate	290	315	25
Sand (3 bailers water an hour at 320')	315	352	37
Coal	352	356	4
Slate	356	400	44
Sand	400	435	35
Coal	435	440	5
Slate and shells	440	490	50
Sand	490	575	85
Slate	575	590	15
Sand	590	708	118
Coal	708	713	5
Lime and sand	713	764	51
Coal	764	767	3
Slate and shells	767	913	146
Sand	913	935	22
Slate	935	990	55
Lime	990	1030	40
Slate	1030	1050	20
Sand	1050	1100	50
Slate and lime	1100	1190	90
Sand	1190	1260	70
Slate and shells	1260	1330	70
Sand	1330	1395	65
Slate and shells	1395	1435	40
Grampus Sand (hole full water, 1580')	1435	1605	170
Slate	1605	1625	20
Salt Sand	1625	1925	300
Slate	1925	1955	30
Lime	1955	1968	13
Slate	1968	1988	20
Lime	1988	2000	12
Slate and shells	2000	2120	120
Red rock	2120	2135	15
Lime	2135	2195	60
Red rock	2195	2270	75
Slate and shells	2270	2400	130
Red rock	2400	2410	10

(OVER)

IMPERIAL COAL CO. NO. 26 (1031) WELL (Continued).

	Top.	Bottom.	Thickness.
Maxton Sand	2410	2475	65
Little Lime	2475	2542	67
Pencil Cave	2542	2552	10
Black lime	2552	2574	22
Big Lime (gas show at 2735')	2574	2785	211
Big Injun Sand	2785	2845	60
Slate and shells	2845	2950	105
Weir Sand	2950	2990	40
Slate	2990	3234	244
Berea Sand (oil pay, 3258-3266')	3234	3266	32
Total depth		3276	

Top.	Bottom.	Thickness.	
10	0		Clay
90	10		Sand
80	100		Slate
170	100		Sand
15	170		Slate
37	170		Sand (gas show at 2735')
4	170		Coal
14	170		Slate
35	170		Sand
2	170		Coal
50	170		Slate and shells
85	170		Sand
15	170		Slate
118	170		Sand
7	170		Coal
74	170		Lime and sand
2	170		Coal
146	170		Slate and shells
32	170		Sand
15	170		Slate
40	170		Lime
20	170		Slate
50	170		Sand
20	170		Slate and lime
70	170		Sand
70	170		Slate and shells
67	170		Sand
40	170		Slate and shells
170	170		Gravelly Sand (hole full water, 1880')
20	170		Slate
300	170		Salt Sand
30	170		Slate
15	170		Lime
20	170		Slate
12	170		Lime
150	170		Slate and shells
15	170		Red rock
60	170		Lime
15	170		Red rock
130	170		Slate and shells
10	170		Red rock

(over)

KAN-1365-A

WELL RECORD

995

UNITED FUEL GAS COMPANY COMPANY SERIAL WELL NO. 1031 MAP SQUARE

NAME Imperial Coal Company

WELL NO. 26 LEASE NO. 2975 ACRES 5400

TOWNSHIP OR DISTRICT Cabin Creek

COUNTY Kanawha

FIELD Oil

STATE W. Va.

RIG _____ Building Cost _____

Contractor _____

Commenced _____ 19____, Completed _____ 19____

DRILLING Cost per Ft. _____

Contractor United Fuel Gas Co. Drilling Dept.

Address Charleston, W. Va.

Commenced June 12 1919, Completed Nov. 29 1919

DRILLERS TOOL DRESSERS

T. W. Goddard _____

C. M. Goodwell _____

CASING AND TUBING		
SIZE	USED IN DRILLING	LEFT IN WELL
16		
13		
10	776	776
8 1/4	1954	1954
6 5/8	2579	2579
5 3/16		
4 7/8		
4		
3		
2		

WELL TUBED

Date _____

_____ in. Tubing or Casing

Size of Packer 6-5/8" Shoe

Kind of Packer _____

1st Perf. Set 2579 from Top

2nd Perf. Set _____ from _____

TEST BEFORE SHOT

_____ of Water in _____ inch

10ths. _____ of Merc. in _____ inch

10ths. Volume _____ Cu. Ft.

TEST AFTER SHOT

_____ of Water in _____ inch

10ths. _____ of Merc. in _____ inch

10ths. Volume _____ Cu. Ft.

Rock Pressure _____

Date Shot 12-1-19

Size of Torpedo 2-5" Shells

40 Qts.

Oil Flowed _____ bbls. 1st 24 hours

Oil Pumped _____ bbls. 1st 24 hours

Well Abandoned and Plugged _____ 19____

DRILLER'S RECORD

FORMATION	TOP	BOTTOM	THICKNESS	Formation	Top	Bottom	Thickness
Clay		10	10	Red Rock	2120 to	2135	15
Sand	10	100	90	Lime	2135	2195	60
Slate	100	120	20	Red Rock	2195	2270	75
Sand	120	290	170	Slate & Shells	2270	2400	130
Slate	290	315	25	Red Rock	2400	2410	10
Sand	315	352	37	Maxin	2410	2475	65
Coal	352	356	4	Little Lime	2475	2542	67
Slate	356	400	44	Pencil Cave	2542	2552	10
Sand	400	435	35	Black Lime	2552	2574	22
Coal	435	440	5	Big Lime	2574	2785	211
Slate & Shells	440	490	50	Big Injun	2785	2845	60
Sand	490	575	85	Slate & Shells	2845	2950	105
Slate	575	590	15	Weir	2950	2990	40
Sand	590 590	708	118	Slate	2990	3234	244
Coal	708	713	5	Berea	3234	3266	32
Lime & Sand	713	764	51	Total Depth	3276		
Coal	764	767	3	Oil Pay	3258 to	3266	
Slate & Shells	767	913	146	Water at 320' 3 Balers an hr.			
Sand	913	935	22	Water at 1580 Hole Full			
Slate	935	990	55	Show Gas in Lime at 2735'			
Lime	990	1030	40	Steel line Measurements at			
Slate	1030	1050	20	2579-3234-3266			
Sand	1050	1100	50				
Slate & Lime	1100	1190	90				
Sand	1190	1260	70				
Slate & Shells	1260	1330	70				
Sand	1330	1395	65				
Slate & Shells	1395	1435	40	8-1/4 Ca ing not pulled on account of 6-5/8			
Grampus	1435	1605	170	leaking. Tried to pull 6-5/8 but was unable			
Slate	1605	1625	20	to do so without parting.			
Salt Sand	1625	1925	300				
Slate	1925	1955	30				
Lime	1955	1968	13				
Slate	1968	1988	20				
Lime	1988	2000	12				
Slate & Shells	2000	2120	120				