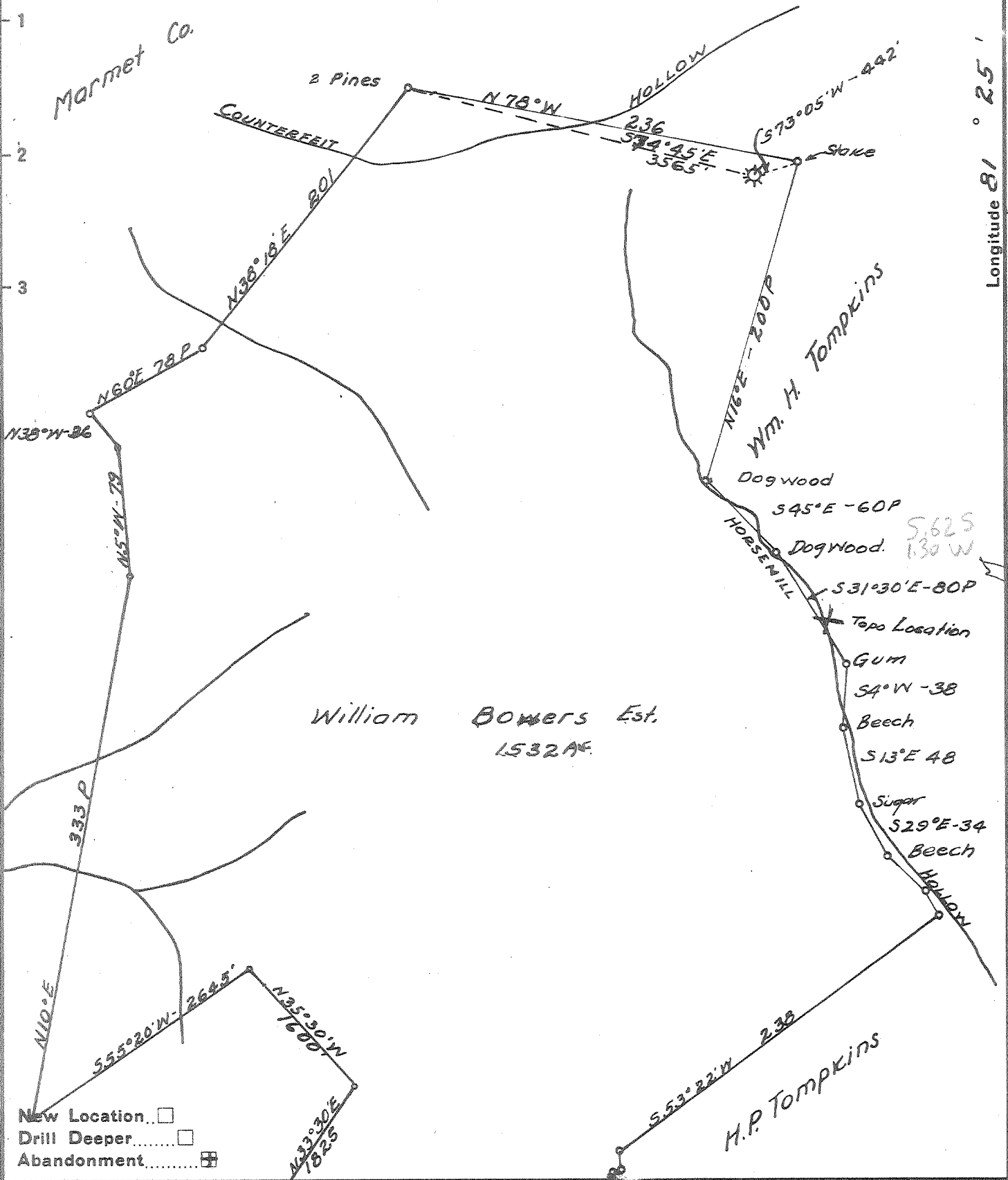


Kanawha & Hocking Coal & Coke Co.



New Location...
 Drill Deeper.....
 Abandonment.....

Company Godfrey L. Cabot Inc.
 Address 300 Union Bldg. Charleston W Va
 Farm William Bowers Estate
 Tract _____ Acres 1532 Lease No. 4-57
 Well (Farm) No. 7 Serial No. 630
 Elevation (Spirit Level) 135.50
 Quadrangle Glendonria -SW
 County Kanawha District Cabin Creek
 Engineer Roy Boston
 Engineer's Registration No. _____
 File No. _____ Drawing No. _____
 Date _____ Scale 1" = 1320'

STATE OF WEST VIRGINIA
 DEPARTMENT OF MINES
 OIL AND GAS DIVISION
 CHARLESTON

WELL LOCATION MAP
 FILE NO. KAN-1369-A

+ Denotes location of well on United States Topographic Maps, scale 1 to 62,500, latitude and longitude lines being represented by border lines as shown.

- Denotes one inch spaces on border line of original tracing.