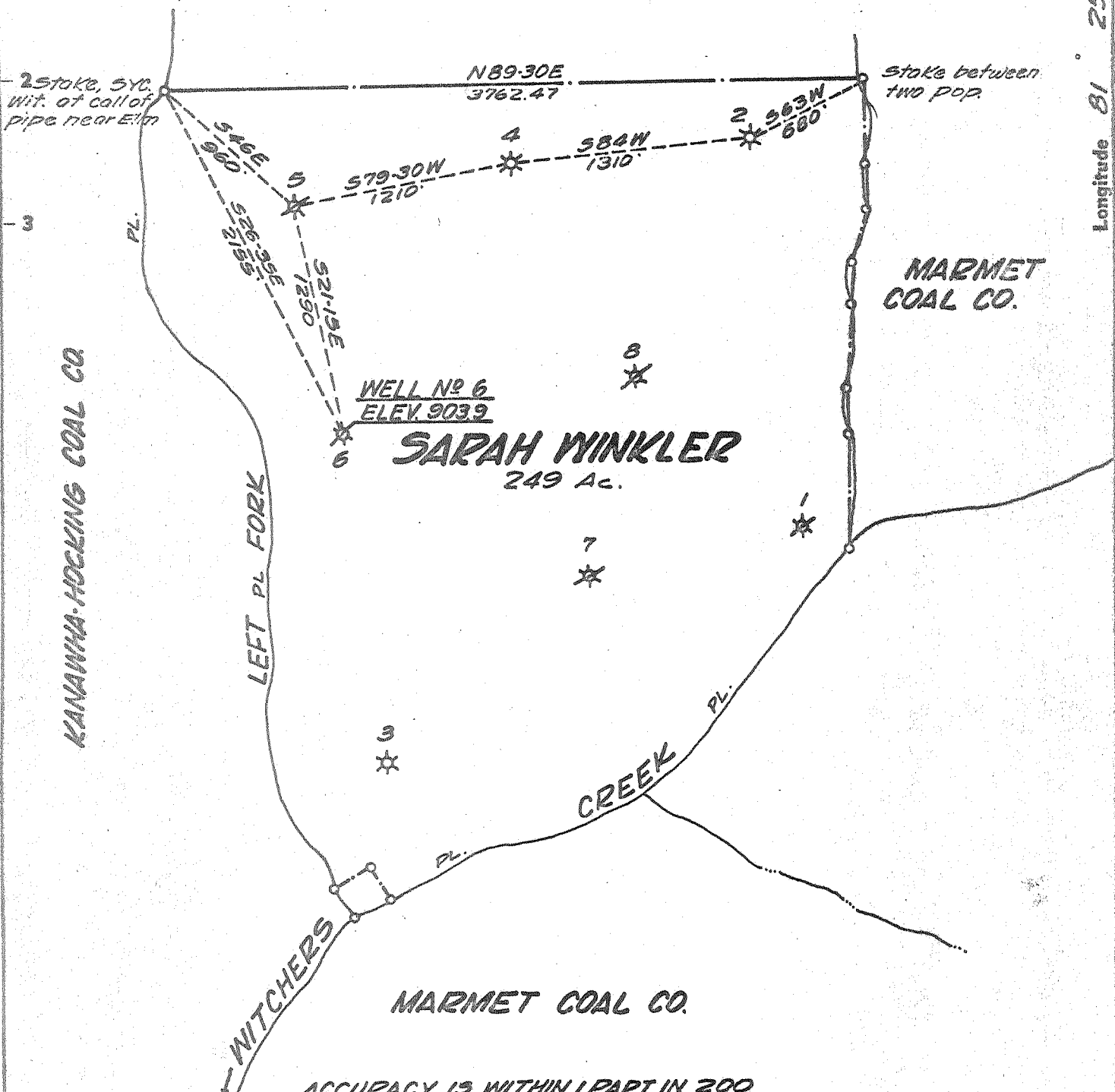


1045
13.5W

Latitude 38 15

Longitude 81 25

KANAWHA-HOCKING COAL CO.



- New Location
- Drill Deeper
- Redrill
- Abandonment

ACCURACY IS WITHIN 1 PART IN 200
ELEV. MADE FROM O.L.D. CONTROL

"I, the undersigned, hereby certify that this map is correct to the best of my knowledge and belief and shows all the information required by paragraph 6 of the rules and regulations of the oil and gas section of the mining laws of West Virginia."
4-28-69

Company	BLUE CREEK GAS COMPANY		
Address	BOX 6357 CHARLESTON, W.VA.		
Farm	SARAH WINKLER		
Tract	Acres	249	Lease No.
Well (Farm) No.	6	Serial No.	
Elevation (Spirit Level)	903.9		
Quadrangle	MONTGOMERY NW		
County	KANAWHA	Distric	CABIN CREEK
Engineer	<i>[Signature]</i>		
Engineer's Registration No.	773		
File No.	Drawing No.		
Date	AUG. 14, 1968 Scale 1" = 800 FT.		

STATE OF WEST VIRGINIA
DEPARTMENT OF MINES
OIL AND GAS DIVISION
CHARLESTON

WELL LOCATION MAP

FILE NO. KAN-1399 (A)

+ Denotes location of well on United States Topographic Maps, scale 1 to 62,500, latitude and longitude lines being represented by border lines as shown.

- Denotes one inch spaces on border line of original tracing.