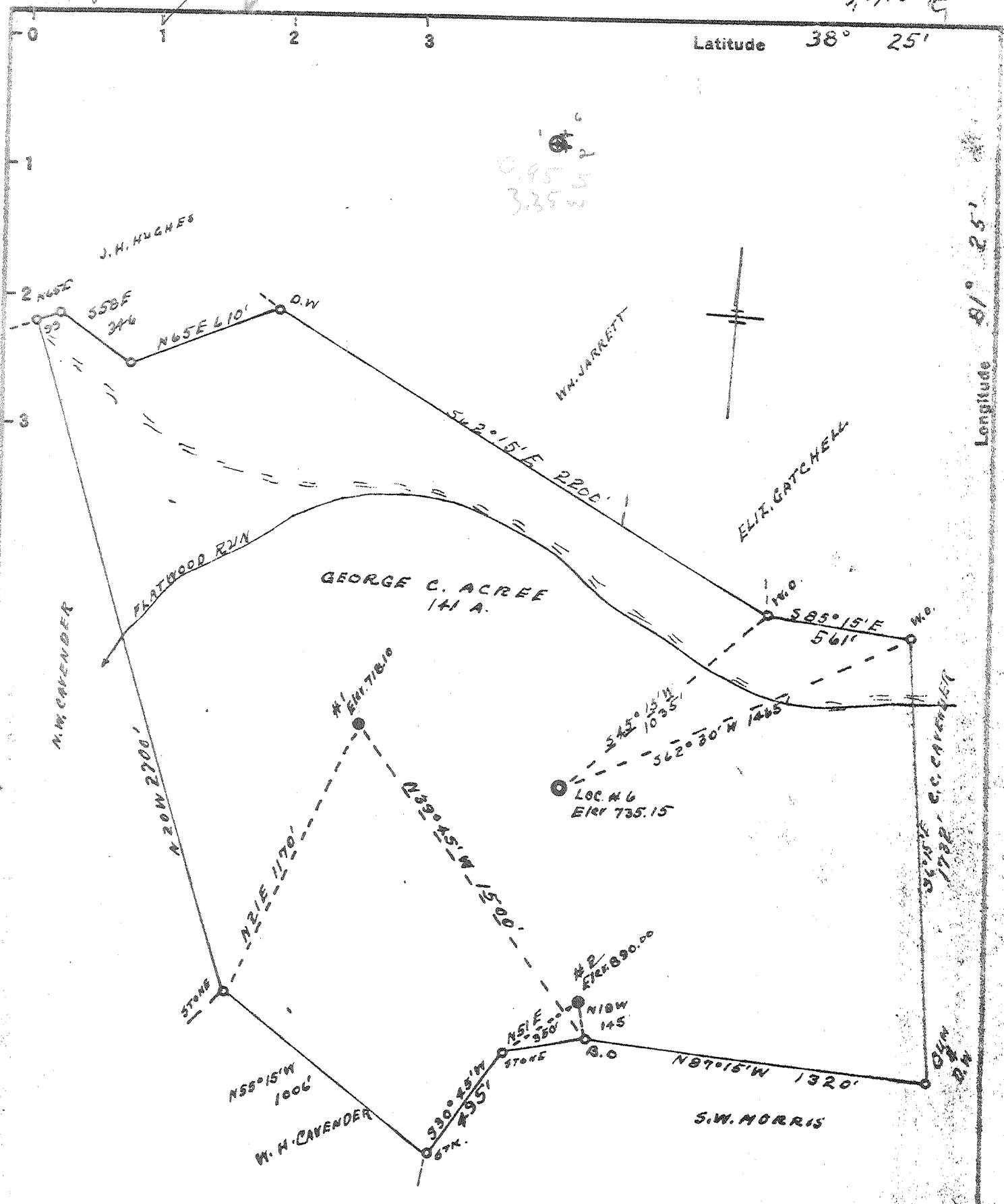


7, 11, 12 E

Latitude 38° 25'

Longitude 81° 25'



New Location...   
 Drill Deeper.....   
 Abandonment.....  5-13176 5-2176

Company BLUE CREEK GAS CO.  
 Address P.O. Bx 6357 CHAS. WV 25302  
 Farm GEORGE C. ACREE  
 Tract \_\_\_\_\_ Acres 141 Lease No. \_\_\_\_\_  
 Well (Farm) No. 1 Serial No. \_\_\_\_\_  
 Elevation (Spirit Level) \* 718.10 \* 890.00 \* 735.15  
 Quadrangle CLENDENNIN WC  
 County KANAWHA District ELK  
 Engineer R. F. Rife  
 Engineer's Registration No. 804  
 File No. \_\_\_\_\_ Drawing No. \_\_\_\_\_  
 Date 10-5-49 Scale 1" = 500'

STATE OF WEST VIRGINIA  
 DEPARTMENT OF MINES  
 OIL AND GAS DIVISION  
 CHARLESTON

WELL LOCATION MAP  
 FILE NO. KAN-1453-A

+ Denotes location of well on United States Topographic Maps, scale 1 to 62,500, latitude and longitude lines being represented by border lines as shown.

- Denotes one inch spaces on border line of original tracing.

47-039

"IMPERIAL" TRACING CLOTH  
 K & B CO., N. Y.