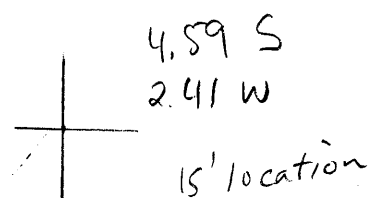


LATITUDE 38°30'

LONGITUDE 81°25'



7.5 OGIS topo location

7.5' loc \_\_\_\_\_ 15' loc \_\_\_\_\_  
 \_\_\_\_\_ (calc.) \_\_\_\_\_

Company William S. Edwards Oil Co

Farm Graham Heirs 4

Quad Clendenin 15'

County Kanawha

District E1K

WELL LOCATION MAP

File No. 40200 70255

#181 in Kanawha  
1914 WUGES County Report