

WW-7
8-30-06



4102398P
RECEIVED
Office of Oil and Gas
MAY 13 2015
WV Department of
Environmental Protection

West Virginia Department of Environmental Protection
Office of Oil and Gas
WELL LOCATION FORM: GPS

API: 47-041-02398 WELL NO.: WV 604133 (John Devaney #4133)
FARM NAME: Devaney
RESPONSIBLE PARTY NAME: EQT Production Company
COUNTY: Lewis DISTRICT: Court House
QUADRANGLE: Peterson 7.5'
SURFACE OWNER: Thomas B. Mullooly Beneficial Trust
ROYALTY OWNER: EQT Production Company, et al.
UTM GPS NORTHING: 4313463
UTM GPS EASTING: 538386 GPS ELEVATION: 380 m (1248 ft)

The Responsible Party named above has chosen to submit GPS coordinates in lieu of preparing a new well location plat for a plugging permit or assigned API number on the above well. The Office of Oil and Gas will not accept GPS coordinates that do not meet the following requirements:

1. Datum: NAD 1983, Zone: 17 North, Coordinate Units: meters, Altitude: height above mean sea level (MSL) – meters.
2. Accuracy to Datum – 3.05 meters
3. Data Collection Method:

Survey grade GPS : Post Processed Differential
Real-Time Differential
Mapping Grade GPS X: Post Processed Differential X
Real-Time Differential

4. Letter size copy of the topography map showing the well location.

I the undersigned, hereby certify this data is correct to the best of my knowledge and belief and shows all the information required by law and the regulations issued and prescribed by the Office of Oil and Gas.



Signature

PS#2180

Title

4/30/15

Date

07/10/2015

41023987

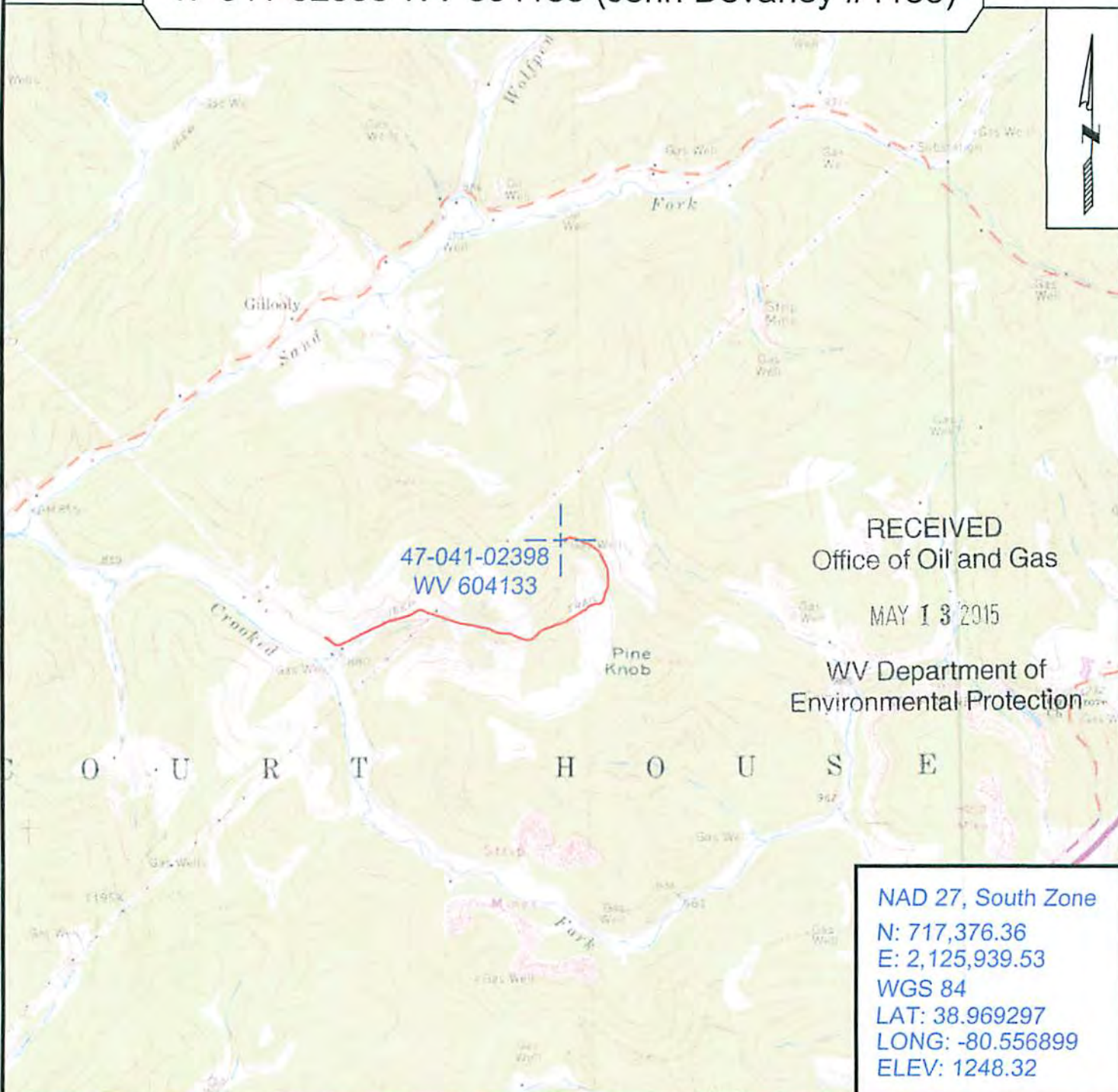
Topo Quad: Peterson 7.5' Scale: 1" = 2000'

County: Lewis Date: April 23, 2015

District: Court House Project No: 73-12-00-08

47-041-02398 WV 604133 (John Devaney #4133)

Topo



RECEIVED
Office of Oil and Gas
MAY 13 2015

WV Department of
Environmental Protection

C O U R T H O U S E

NAD 27, South Zone
N: 717,376.36
E: 2,125,939.53
WGS 84
LAT: 38.969297
LONG: -80.556899
ELEV: 1248.32



SURVEYING AND MAPPING SERVICES PERFORMED BY:

ALLEGHENY SURVEYS, INC.

1-800-482-8606
237 Birch River Road
Birch River, WV 26610
PH: (304) 649-8606
FAX: (304) 649-8608

PREPARED FOR:

EQT Production Company

P.O. Box 280
Bridgeport, WV 26330

07/10/2015